

**PRATT & WHITNEY CANADA**  
**ILLUSTRATED PARTS CATALOG**  
**MANUAL PART NO. 3013244**

LIST OF EFFECTIVE PAGES

<u>CHAPTER SECTION</u>	<u>PAGE</u>	<u>DATE</u>
LEP	1	Aug 27/2004
	2 blank	Aug 27/2004
Contents	1	Aug 27/2004
	2 blank	Aug 27/2004
76-10-00 Figure 1	1	Aug 27/2004
	2	Aug 27/2004
	3	Aug 27/2004
	4	Aug 27/2004
	5	Aug 27/2004
	6	Aug 27/2004
	7	Aug 27/2004
	8	Aug 27/2004
	9	Aug 27/2004
	10	Aug 27/2004
	11	Aug 27/2004
	12	Aug 27/2004
76-10-00 Figure 2	1	Aug 27/2004
	2	Aug 27/2004
	3	Aug 27/2004
	4	Aug 27/2004
	5	Aug 27/2004
	6	Aug 27/2004
	7	Aug 27/2004
	8 blank	Aug 27/2004
76-10-00 Figure 3	1	Aug 27/2004
	2	Aug 27/2004
	3	Aug 27/2004
	4 blank	Aug 27/2004



**PRATT & WHITNEY CANADA**  
**ILLUSTRATED PARTS CATALOG**  
**MANUAL PART NO. 3013244**

TABLE OF CONTENTS

<u>TITLE</u>	<u>CH/SE/SU</u>	<u>FIGURE</u>
Propeller Reversing Interconnect Linkage, Front, Alternate Force Link Arrangement	76-10-00	3
Propeller Reversing Interconnect Linkage Group, Front	76-10-00	2
Propeller Reversing Interconnect Linkage Group, Rear	76-10-00	1



# Propeller Reversing Interconnect Linkage Group, Rear

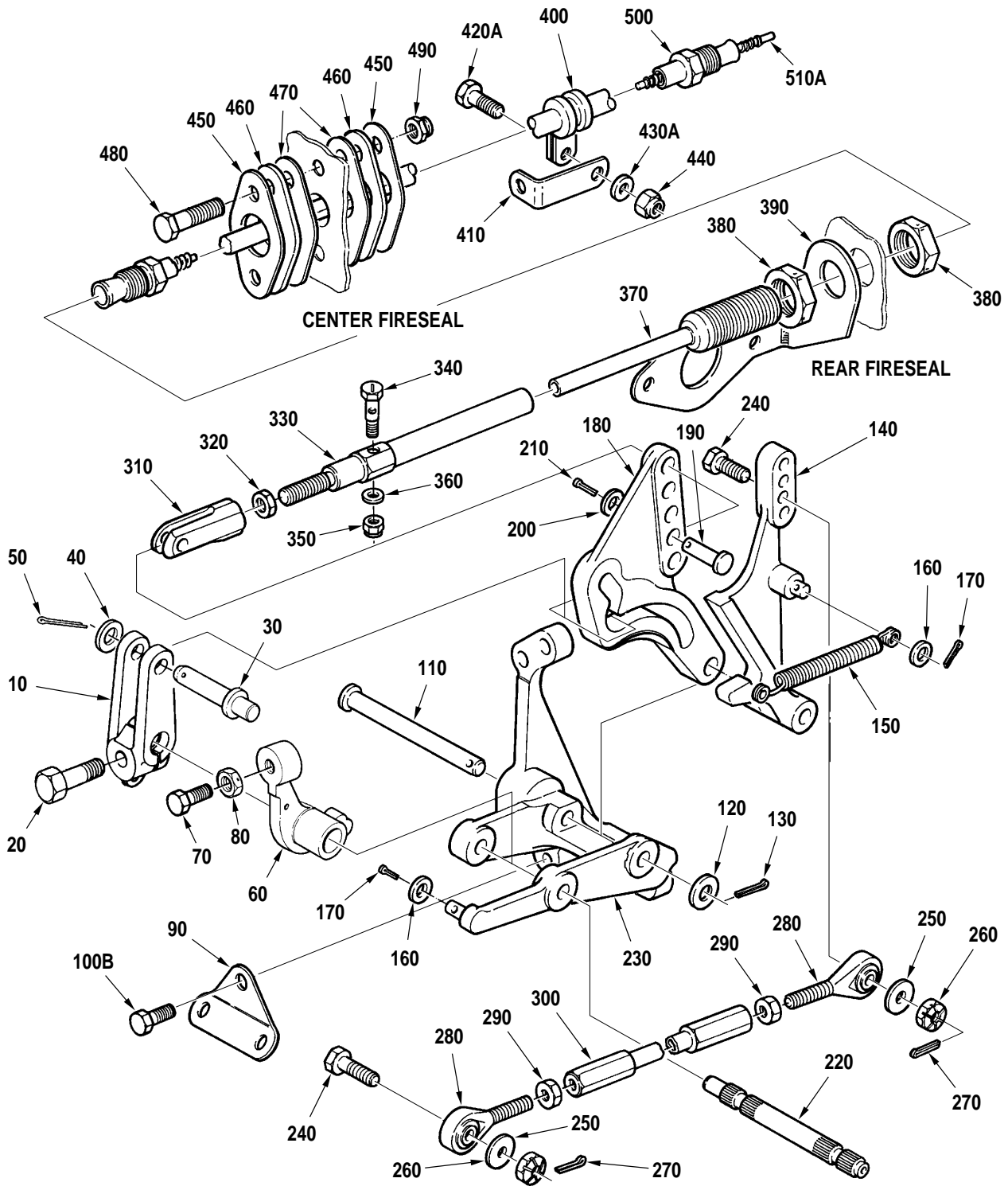
**76-10-00**

Figure 1

Page 1

Aug 27/2004

PRATT & WHITNEY CANADA  
 ILLUSTRATED PARTS CATALOG  
 MANUAL PART NO. 3013244



Propeller Reversing Interconnect Linkage Group, Rear  
 Figure 1

76-10-00

Figure 1

Page 2

Aug 27/2004

C52069B

**PRATT & WHITNEY CANADA**  
**ILLUSTRATED PARTS CATALOG**  
**MANUAL PART NO. 3013244**

FIG. ITEM	PART NUMBER	AIRLINE PART NUMBER	NOMENCLATURE	EFFECT CODE	UNITS PER ASSY
1			1234567		
- 1			PROPELLER REVERSING INTERCONNECT LINKAGE GROUP, REAR SEE 72-00-00 FIG. 1 FOR NHA	A B C	REF
10	3011684		.LEVER, FOLLOWER FOR ENGINES BUILT TO BS307, BS321, BS325, BS330, BS362, BS367, BS374, BS393, BS410, BS414, BS423, BS622, BS624, BS801	A B C	1
20	3012425		.BOLT, MACHINE, DRD HEX FOR ENGINES BUILT TO BS307, BS321, BS325, BS330, BS362, BS367, BS374, BS393, BS410, BS414, BS423, BS622, BS624, BS801	A B C	1
30	3010464		.PIN, SHOULDER, HEADLESS FOR ENGINES BUILT TO BS307, BS321, BS325, BS330, BS362, BS367, BS374, BS393, BS410, BS414, BS423, BS622, BS624, BS801	A B C	1
40	MS9321-10		.WASHER, FLAT FOR ENGINES BUILT TO BS307, BS321, BS325, BS330, BS362, BS367, BS374, BS393, BS410, BS414, BS423, BS622, BS624, BS801	A B C	1
50	MS9245-23		.PIN, COTTER FOR ENGINES BUILT TO BS307, BS321, BS325, BS330, BS362, BS367, BS374, BS393, BS410, BS414, BS423, BS622, BS624, BS801	A B C	1
60	3010455		.LEVER, FUEL CONTROL FOR ENGINES BUILT TO BS307, BS321, BS325, BS330, BS362, BS367, BS374, BS393, BS410, BS414, BS423, BS622, BS624, BS801	A B C	1
70	3012417		.ADJUSTER, EXTERNALLY THD FOR ENGINES BUILT TO BS307, BS321, BS325, BS330, BS362, BS367, BS374, BS393, BS410, BS414, BS423, BS622, BS624, BS801 O.190-32UNJF X 0.688	A B C	1

CONTINUED

- ITEM NOT ILLUSTRATED

EFF MODEL A PT6A-27 B PT6A-28 C PT6A-21	EFF MODEL	EFF MODEL
--	-----------	-----------

**76-10-00**

**Figure 1**

Page 3

Aug 27/2004

**PRATT & WHITNEY CANADA**  
**ILLUSTRATED PARTS CATALOG**  
**MANUAL PART NO. 3013244**

FIG. ITEM	PART NUMBER	AIRLINE PART NUMBER	NOMENCLATURE	EFFECT CODE	UNITS PER ASSY
1			1234567		
80	3012254		.NUT, PLAIN, HEX FOR ENGINES BUILT TO BS307, BS321, BS325, BS330, BS362, BS367, BS374, BS393, BS410, BS414, BS423, BS622, BS624, BS801 REFER TO PARTS SUBSTITUTION LIST IN INTRODUCTION	A B C	1
90	3008981		.BRACKET, ANGLE, 39-DEG	A B C	1
			ATTACHING PARTS		
- 100	3011928		.BOLT, MACHINE, HEX INTRCHG WITH P/N 3012217	A B C	1
- 100A	3012217		.BOLT, MACHINE, HEX INTRCHG WITH P/N MS9529-04	A B C	1
100B	MS9529-04		.BOLT, MACHINE, HEX	A B C	1
- 100C	MS9923-04		.BOLT, MACHINE, DR DBL HEX	A B C	1
			-----*-----		
110	3010457		.PIN, STRAIGHT HEADED FOR ENGINES BUILT TO BS307, BS321, BS325, BS330, BS362, BS367, BS374, BS393, BS410, BS414, BS423, BS622, BS624, BS801	A B C	1
120	MS9321-10		.WASHER, FLAT FOR ENGINES BUILT TO BS307, BS321, BS325, BS330, BS362, BS367, BS374, BS393, BS410, BS414, BS423, BS622, BS624, BS801	A B C	1
130	MS9245-23		.PIN, COTTER FOR ENGINES BUILT TO BS307, BS321, BS325, BS330, BS362, BS367, BS374, BS393, BS410, BS414, BS423, BS622, BS624, BS801	A B C	1
CONTINUED					

- ITEM NOT ILLUSTRATED

EFF MODEL	EFF MODEL	EFF MODEL
A PT6A-27		
B PT6A-28		
C PT6A-21		

**76-10-00**  
**Figure 1**  
Page 4  
Aug 27/2004



**PRATT & WHITNEY CANADA**  
**ILLUSTRATED PARTS CATALOG**  
**MANUAL PART NO. 3013244**

FIG. ITEM	PART NUMBER	AIRLINE PART NUMBER	NOMENCLATURE	EFFECT CODE	UNITS PER ASSY
1			1234567		
140	3010454		. LEVER, FUEL CONTROL FOR ENGINES BUILT TO BS307, BS321, BS325, BS330, BS362, BS367, BS374, BS393, BS410, BS414, BS423, BS622, BS624, BS801 FOR ENGINES BUILT TO BS459, BS486, BS571, BS671, BS788 PRE-SB1486 NONINTR WITH P/N 3114548-01	A B C	1
- 140A	3114548-01		. LEVER, FUEL CONTROL FOR ENGINES BUILT TO BS307, BS321, BS325, BS330, BS362, BS367, BS374, BS393, BS410, BS414, BS423, BS622, BS624, BS801 FOR ENGINES BUILT TO BS459, BS486, BS571, BS671, BS788 POST-SB1486 PRE-SB1492 TWO-WAY INTRCHG WITH P/N 3119355-01 SEE NOTE 5	A B C	1
- 140B	3119355-01		. LEVER, FUEL CONTROL FOR ENGINES BUILT TO BS307, BS321, BS325, BS330, BS362, BS367, BS374, BS393, BS410, BS414, BS423, BS622, BS624, BS801, BS877 POST-SB1492	A B C	1
150	3010467		. SPRING, HELICAL FOR ENGINES BUILT TO BS307, BS321, BS325, BS330, BS362, BS367, BS374, BS393, BS410, BS414, BS423, BS622, BS624, BS801	A B C	1
160	3001564		. WASHER, PLAIN FOR ENGINES BUILT TO BS307, BS321, BS325, BS330, BS362, BS367, BS374, BS393, BS410, BS414, BS423, BS622, BS624, BS801	A B C	1
170	MS9245-23		. PIN, COTTER FOR ENGINES BUILT TO BS307, BS321, BS325, BS330, BS362, BS367, BS374, BS393, BS410, BS414, BS423, BS622, BS624, BS801	A B C	1

CONTINUED

- ITEM NOT ILLUSTRATED

EFF MODEL A PT6A-27 B PT6A-28 C PT6A-21	EFF MODEL	EFF MODEL
--	-----------	-----------

**PRATT & WHITNEY CANADA**  
**ILLUSTRATED PARTS CATALOG**  
**MANUAL PART NO. 3013244**

FIG. ITEM	PART NUMBER	AIRLINE PART NUMBER	NOMENCLATURE	EFFECT CODE	UNITS PER ASSY
1			1234567		
180	3011291		.CAM, PROPELLER CONTROL FOR ENGINES BUILT TO BS330, BS362, BS367, BS410, BS622 FOR ENGINES BUILT TO BS459, BS486, BS571, BS671, BS788 (QUIET TAXI) PRE-PT6A SPB NO.80 TWO-WAY INTRCHG WITH P/N 3054546-01	A B C	1
- 180A	3010844		.CAM, PROPELLER CONTROL FOR ENGINES BUILT TO BS321, BS325, BS374, BS423 (LINEAR BETA) PRE-PT6A SPB NO.80 TWO-WAY INTRCHG WITH P/N 3054545-01	A B C	1
- 180B	3010452		.CAM, PROPELLER CONTROL FOR ENGINES BUILT TO BS307, BS393, BS414, BS624, BS801 (STOL CAM - APPROACH BETA) PRE-SB1509 PRE-PT6A SPB NO.80 RESTRICTED INTERCHANGEABILITY WITH P/N . REFER TO APPLICABLE SERVICE BULLETIN. TWO-WAY INTRCHG WITH P/N 3054544-01	A B C	1
- 180C	3119347-01		.CAM, PROPELLER CONTROL FOR ENGINES BUILT TO BS877 (STOL CAM - APPROACH BETA) SEE NOTE 6 POST-SB1509 PRE-PT6A SPB NO.80 RESTRICTED INTERCHANGEABILITY WITH P/N . REFER TO APPLICABLE SERVICE BULLETIN. TWO-WAY INTRCHG WITH P/N 3054553-01	A	1
- 180D	3054546-01		.PROPELLER CONTROL CAM FOR ENGINES BUILT TO BS330, BS362, BS367, BS410, BS622 (QUIET TAXI) POST-PT6A SPB NO.80	A B C	1
- 180E	3054545-01		.PROPELLER CONTROL CAM FOR ENGINES BUILT TO BS321, BS325, BS374, BS423 (LINEAR BETA) POST-PT6A SPB NO.80	A	1

CONTINUED

- ITEM NOT ILLUSTRATED

EFF MODEL	EFF MODEL	EFF MODEL
A PT6A-27		
B PT6A-28		
C PT6A-21		

**76-10-00**

**Figure 1**

Page 6

Aug 27/2004

**PRATT & WHITNEY CANADA**  
**ILLUSTRATED PARTS CATALOG**  
**MANUAL PART NO. 3013244**

FIG. ITEM	PART NUMBER	AIRLINE PART NUMBER	NOMENCLATURE	EFFECT CODE	UNITS PER ASSY
			1234567		
1					
- 180F	3054544-01		.PROPELLER CONTROL CAM FOR ENGINES BUILT TO BS307, BS393, BS414, BS624, BS801 (STOL CAM) POST-PT6A SPB NO.80	A	1
- 180G	3054553-01		.PROPELLER CONTROL CAM FOR ENGINES BUILT TO BS877 (STOL CAM) POST-PT6A SPB NO.80	A	1
190	3008971		.PIN, STRAIGHT FOR ENGINES BUILT TO BS307, BS321, BS325, BS330, BS362, BS367, BS374, BS393, BS410, BS414, BS423, BS622, BS624, BS801	A B C	1
200	3001564		.WASHER PLAIN FOR ENGINES BUILT TO BS307, BS321, BS325, BS330, BS362, BS367, BS374, BS393, BS410, BS414, BS423, BS622, BS624, BS801	A B C	1
210	MS9245-23		.PIN, COTTER FOR ENGINES BUILT TO BS307, BS321, BS325, BS330, BS362, BS367, BS374, BS393, BS410, BS414, BS423, BS622, BS624, BS801	A B C	1
220	3011094		.PIN, GROOVED, REVERSING LEVER MECHANISM FOR ENGINES BUILT TO BS307, BS321, BS325, BS330, BS362, BS367, BS374, BS393, BS410, BS414, BS423, BS622, BS624, BS801	A B C	1
230	3012381		.BRACKET, CONTROL LEVER MOUNTING FOR ENGINES BUILT TO BS307, BS324, BS325, BS330, BS362, BS367, BS374, BS392, BS410, BS414, BS423, BS622, BS624, BS801, BS954 FOR ENGINES BUILT TO BS346, BS365, BS418, BS419, BS473, BS475, BS485, BS570, BS610 FOR ENGINES BUILT TO BS459, BS486, BS571, BS671, BS788 PRE-SB1486 NONINTR WITH P/N 3114279-01	A B C	1

CONTINUED

- ITEM NOT ILLUSTRATED

EFF MODEL	EFF MODEL	EFF MODEL
A PT6A-27		
B PT6A-28		
C PT6A-21		

**76-10-00**

**Figure 1**

Page 7

Aug 27/2004

**PRATT & WHITNEY CANADA**  
**ILLUSTRATED PARTS CATALOG**  
**MANUAL PART NO. 3013244**

FIG. ITEM	PART NUMBER	AIRLINE PART NUMBER	NOMENCLATURE	EFFECT CODE	UNITS PER ASSY
			1234567		
1					
- 230A	3114279-01		.BRACKET, CONTROL LEVER MOUNTING POST-SB1486 SEE NOTE 5	A B C	1
240	3012385		.BOLT, MACHINE, DRD, HEX FOR ENGINES BUILT TO BS307, BS321, BS325, BS330, BS362, BS367, BS374, BS393, BS410, BS414, BS423, BS622, BS624, BS801	A B C	2
250	3010566		.WASHER, PLAIN FOR ENGINES BUILT TO BS307, BS321, BS325, BS330, BS362, BS367, BS374, BS393, BS410, BS414, BS423, BS622, BS624, BS801	A B C	2
260	3011976		.NUT, CASTLE, HEX INTRCHG WITH P/N MS9358-09	A B C	2
- 260A	MS9358-09		.NUT, CASTLE, HEX FOR ENGINES BUILT TO BS307, BS321, BS325, BS330, BS362, BS367, BS374, BS393, BS410, BS414, BS423, BS622, BS624, BS801	A B C	2
270	MS9245-23		.PIN, COTTER FOR ENGINES BUILT TO BS307, BS321, BS325, BS330, BS362, BS367, BS374, BS393, BS410, BS414, BS423, BS622, BS624, BS801	A B C	2
280	3008787		.CONNECTOR, ROD END FOR ENGINES BUILT TO BS307, BS321, BS325, BS330, BS362, BS367, BS374, BS393, BS410, BS414, BS423, BS622, BS624, BS801	A B C	2
290	3012254		.NUT, PLAIN, DRD HEX FOR ENGINES BUILT TO BS307, BS321, BS325, BS330, BS362, BS367, BS374, BS393, BS410, BS414, BS423, BS622, BS624, BS801 REFER TO PARTS SUBSTITUTION LIST IN INTRODUCTION	A B C	2
CONTINUED					

- ITEM NOT ILLUSTRATED

EFF MODEL	EFF MODEL	EFF MODEL
A PT6A-27		
B PT6A-28		
C PT6A-21		

**76-10-00**

**Figure 1**

Page 8

Aug 27/2004

**PRATT & WHITNEY CANADA**  
**ILLUSTRATED PARTS CATALOG**  
**MANUAL PART NO. 3013244**

FIG. ITEM	PART NUMBER	AIRLINE PART NUMBER	NOMENCLATURE	EFFECT CODE	UNITS PER ASSY
1			1234567		
300	3010458		.ROD, INTERNAL THD FOR ENGINES BUILT TO BS307, BS321, BS325, BS330, BS362, BS367, BS374, BS393, BS410, BS414, BS423, BS622, BS624, BS801	A B C	1
310	3012419		.CLEVIS, ROD END	A B C	1
320	3012387		.NUT, PLAIN, HEX	A B C	1
330	3011214		.TERMINAL, WIRE ROPE, PUSH-PULL CONTROL, REAR FOR ENGINES BUILT TO BS459, BS486, BS571, BS671, BS788 PRE-SB1544 RESTRICTED INTERCHANGEABILITY WITH P/N 3045163-01. REFER TO APPLICABLE SERVICE BULLETIN.	A B C	1
	3011214(SB1544)		.TERMINAL, WIRE ROPE, PUSH-PULL CONTROL, REAR POST-SB1544	A B C	RWK
- 330A	3045163-01		.TERMINAL, WIRE ROPE, PUSH-PULL CONTROL, REAR POST-SB1544	A B C	1
340	3011213		.CLAMP, WIRE ROPE, PUSH-PULL CONTROL, REAR	A B C	1
350	3012675		.NUT OPTION (IC) FOR ENGINES BUILT TO BS459, BS486, BS571, BS671, BS788 SEE TABLE FOR OPTIONAL PART NUMBERS PRE-SB1544 RESTRICTED INTERCHANGEABILITY WITH P/N ST3081-10. REFER TO APPLICABLE SERVICE BULLETIN.	A B C	1
- 350A	ST3081-10		.NUT OPTION (IC) SEE TABLE FOR OPTIONAL PART NUMBERS POST-SB1544	A B C	1
360	MS9321-09		.WASHER, FLAT	A B C	1

CONTINUED

- ITEM NOT ILLUSTRATED

EFF MODEL A PT6A-27 B PT6A-28 C PT6A-21	EFF MODEL	EFF MODEL
--	-----------	-----------

**76-10-00**  
**Figure 1**  
Page 9  
Aug 27/2004

**PRATT & WHITNEY CANADA**  
**ILLUSTRATED PARTS CATALOG**  
**MANUAL PART NO. 3013244**

FIG. ITEM	PART NUMBER	AIRLINE PART NUMBER	NOMENCLATURE	EFFECT CODE	UNITS PER ASSY
1			1234567		
370	3011217		.SWIVEL JOINT, CASING, PUSH-PULL CONTROL, REAR	A B C	1
380	MS9201-07		.NUT, PLAIN, HEX	A B C	2
390	3012525		.BRACKET, REAR, FIRESEAL MOUNT RING SUPPORT	A B C	1
400	3004359		.CLAMP ASSEMBLY, LOOP, CUSHION FOR ENGINES BUILT TO BS307, BS321, BS324, BS325, BS330, BS362, BS367, BS374, BS392, BS393, BS410, BS414, BS423, BS622, BS624, BS801, BS954 FOR ENGINES BUILT TO BS459, BS486, BS571, BS671, BS788 PRE-PT6A SPB NO.10 TWO-WAY INTRCHG WITH P/N ST2231-04	A B C	1
- 400A	ST2231-04		.CLAMP ASSEMBLY, LOOP, CUSHION POST-PT6A SPB NO.10	A B C	1
410	MS9228-05		.BRACKET, ANGLE, 90-DEG INTRCHG WITH P/N MS9600-054	A B C	1
- 410A	MS9600-054		.BRACKET, ANGLE, 90-DEG	A B C	1
			ATTACHING PARTS		
- 420	3012358		.BOLT, MACHINE, HEX INTRCHG WITH P/N MS9518-06	A B C	1
420A	MS9518-06		.BOLT, MACHINE, HEX	A B C	1
- 430	AN122581		.WASHER, PLAIN INTRCHG WITH P/N MS9320-09	A B C	1
430A	MS9320-09		.WASHER, FLAT	A B C	1
440	3012675		.NUT OPTION (IC) SEE TABLE FOR OPTIONAL PART NUMBERS	A B C	1
			-----*-----		

CONTINUED

- ITEM NOT ILLUSTRATED

EFF MODEL	EFF MODEL	EFF MODEL
A PT6A-27		
B PT6A-28		
C PT6A-21		

**76-10-00**

**Figure 1**

Page 10

Aug 27/2004

**PRATT & WHITNEY CANADA**  
**ILLUSTRATED PARTS CATALOG**  
**MANUAL PART NO. 3013244**

FIG. ITEM	PART NUMBER	AIRLINE PART NUMBER	NOMENCLATURE	EFFECT CODE	UNITS PER ASSY
1			1234567		
450	3011512		.PLATE, SEAL RETAINING	A B C	2
460	3011516		.INSULATION, SEAL RETAINING PLATE FOR ENGINES BUILT TO BS307, BS321, BS324, BS325, BS330, BS362, BS367, BS374, BS392, BS393, BS410, BS414, BS423, BS622, BS624, BS801, BS954 FOR ENGINES BUILT TO BS459, BS486, BS571, BS671, BS788 INTRCHG WITH P/N 3106794-02	A B C	2
- 460A	3106794-02		.INSULATION, SEAL RETAINING PLATE FOR ENGINES BUILT TO BS459, BS486, BS571, BS671, BS788 PRE-SB1493 TWO-WAY INTRCHG WITH P/N 3117230-02	A B C	2
- 460B	3117230-02		.INSULATION, SEAL RETAINING PLATE POST-SB1493	A B C	2
470	3011519		.SEAL, PUSH-PULL CONTROL CABLE	A B C	2
			ATTACHING PARTS		
480	MS9518-08		.BOLT, MACHINE, HEX INTRCHG WITH P/N MS9518-10	A B C	2
- 480A	MS9518-10		.BOLT, MACHINE, HEX	A B C	2
490	3012675		.NUT OPTION (IC) SEE TABLE FOR OPTIONAL PART NUMBERS -----*-----	A B C	2
500	3011839		.CASING, FLEXIBLE SHAFT, PUSH-PULL CONTROL	A B C	1
- 510	3011215		.WIRE ROPE, PUSH-PULL CONTROL PRE-SB1126 INTRCHG WITH P/N 3018024	A B C	1
510A	3018024		.WIRE ROPE, PUSH-PULL CONTROL POST-SB1126	A B C	1

CONTINUED

- ITEM NOT ILLUSTRATED

EFF MODEL A PT6A-27 B PT6A-28 C PT6A-21	EFF MODEL	EFF MODEL
--	-----------	-----------

**76-10-00**  
**Figure 1**  
Page 11  
Aug 27/2004

**PRATT & WHITNEY CANADA**  
**ILLUSTRATED PARTS CATALOG**  
**MANUAL PART NO. 3013244**

FIG. ITEM	PART NUMBER	AIRLINE PART NUMBER	NOMENCLATURE	EFFECT CODE	UNITS PER ASSY
1			1234567		
520	DELETED		TRANSFERRED TO 73-20-00		
530	DELETED		TRANSFERRED TO 73-20-00		
540	DELETED		TRANSFERRED TO 73-20-00		
			<u>NOTE</u> 1: DELETED		
			<u>NOTE</u> 2: DELETED		
			<u>NOTE</u> 3: DELETED		
			<u>NOTE</u> 4: DELETED		
			<u>NOTE</u> 5: P/N 3114279-01 AND 3114548-01 MUST BE FITTED AS A SET		
			<u>NOTE</u> 6: P/N 3119347-01, 3120991-01 AND 3103470-01 MUST BE FITTED AS A SET		

- ITEM NOT ILLUSTRATED

EFF MODEL	EFF MODEL	EFF MODEL

**76-10-00**  
**Figure 1**  
Page 12  
Aug 27/2004



# Propeller Reversing Interconnect Linkage Group, Front

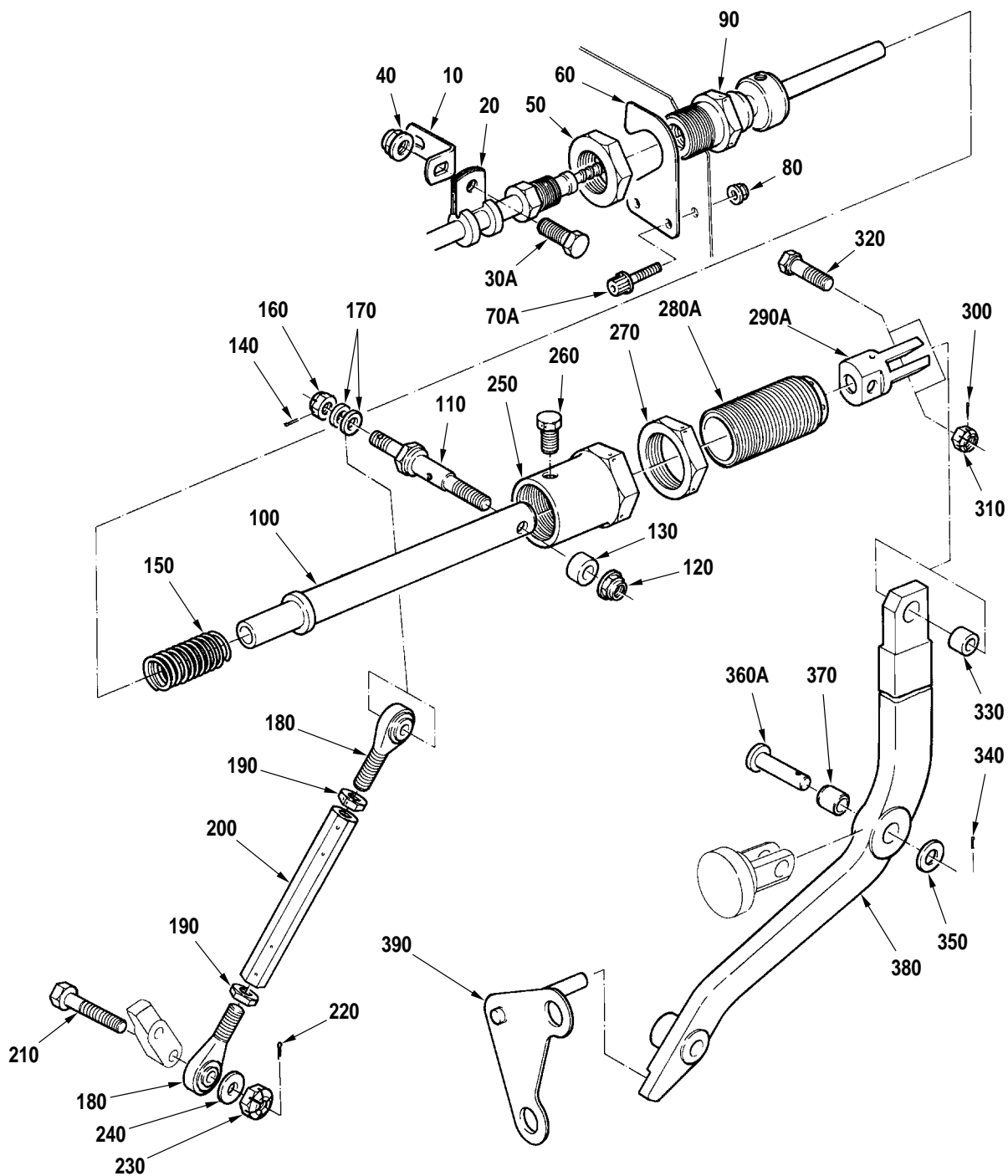
**76-10-00**

**Figure 2**

Page 1

Aug 27/2004

PRATT & WHITNEY CANADA  
ILLUSTRATED PARTS CATALOG  
MANUAL PART NO. 3013244



Propeller Reversing Interconnect Linkage Group, Front  
Figure 2

76-10-00

Figure 2

Page 2

Aug 27/2004

C52070

**PRATT & WHITNEY CANADA**  
**ILLUSTRATED PARTS CATALOG**  
**MANUAL PART NO. 3013244**

FIG. ITEM	PART NUMBER	AIRLINE PART NUMBER	1234567 NOMENCLATURE	EFFECT CODE	UNITS PER ASSY
2					
- 1			PROPELLER REVERSING INTERCONNECT LINKAGE GROUP, FRONT SEE 72-00-00 FIG. 1 FOR NHA	A B C	REF
10	MS9228-10		.BRACKET, ANGLE, 90-DEG INTRCHG WITH P/N MS9600-128	A B C	1
- 10A	MS9600-128		.BRACKET, ANGLE, 90-DEG FOR ENGINES BUILT TO BS459, BS486, BS571, BS671, BS788 PRE-SB1528 TWO-WAY INTRCHG WITH P/N MS9592-300	A B C	1
- 10B	MS9592-300		.BRACKET, ANGLE, 90-DEG O.190 BOLT POST-SB1528	A B C	1
20	3004359		.CLAMP ASSEMBLY, LOOP, CUSHION FOR ENGINES BUILT TO BS459, BS486, BS571, BS671, BS788 PRE-PT6A SPB NO.10 TWO-WAY INTRCHG WITH P/N ST2231-04	A B C	1
- 20A	ST2231-04		.CLAMP ASSEMBLY, LOOP, CUSHION POST-PT6A SPB NO.10	A B C	1
			ATTACHING PARTS		
- 30	3012358		..BOLT, MACHINE, HEX INTRCHG WITH P/N MS9518-06	A B C	1
30A	MS9518-06		..BOLT, MACHINE, HEX	A B C	1
40	3012675		..NUT OPTION (IC) SEE TABLE FOR OPTIONAL PART NUMBERS  -----*-----	A B C	1
50	MS9201-07		.NUT, PLAIN, HEX	A B C	1
60	3022334		.PLATE, SWIVEL, JOINT RETAINING POST-SB1185	A B C	1

CONTINUED

- ITEM NOT ILLUSTRATED

EFF MODEL A PT6A-27 B PT6A-28 C PT6A-21	EFF MODEL	EFF MODEL
--	-----------	-----------

**76-10-00**  
**Figure 2**  
Page 3  
Aug 27/2004

**PRATT & WHITNEY CANADA**  
**ILLUSTRATED PARTS CATALOG**  
**MANUAL PART NO. 3013244**

FIG. ITEM	PART NUMBER	AIRLINE PART NUMBER	NOMENCLATURE	EFFECT CODE	UNITS PER ASSY
2			1234567		
			ATTACHING PARTS		
- 70	3016247		.BOLT, MACHINE, DBL HEX PRE-SB1185 INTRCHG WITH P/N MS9914-08	A B C	2
70A	MS9914-08		.BOLT, MACHINE, DBL HEX POST-SB1185	A B C	2
80	3012675		.NUT OPTION (IC) SEE TABLE FOR OPTIONAL PART NUMBERS	A B C	2
			-----*-----		
90	3011210		.SWIVEL JOINT, CASING, PUSH-PULL CONTROL	A B C	1
100	3015109		.TERMINAL, WIRE ROPE, PUSH-PULL CONTROL FOR ENGINES BUILT TO BS324, BS325, BS330, BS362, BS367, BS374, BS392, BS393, BS410, BS423, BS622, BS954 FOR ENGINES BUILT TO BS346, BS365, BS418, BS419, BS473, BS475, BS485, BS570, BS610	A B C	1
110	3012534		.CLAMP, WIRE ROPE, PUSH-PULL CONTROL	A B C	1
120	3012675		.NUT OPTION (IC) SEE TABLE FOR OPTIONAL PART NUMBERS	A B C	1
130	3012533		.SPACER, FLAT	A B C	1
140	MS9245-23		.PIN, COTTER	A B C	1
150	3010871		.SPRING, HELICAL COMPRESSION PRE-SB1129	A B C	1
- 150A	DELETED		POST-SB1129		
160	3011976		.NUT, CASTLE, HEX INTRCHG WITH P/N MS9358-09	A B C	1
- 160A	MS9358-09		.NUT, CASTLE, HEX	A B C	1

CONTINUED

- ITEM NOT ILLUSTRATED

EFF MODEL A PT6A-27 B PT6A-28 C PT6A-21	EFF MODEL	EFF MODEL
--	-----------	-----------

**76-10-00**  
**Figure 2**  
Page 4  
Aug 27/2004

**PRATT & WHITNEY CANADA**  
**ILLUSTRATED PARTS CATALOG**  
**MANUAL PART NO. 3013244**

FIG. ITEM	PART NUMBER	AIRLINE PART NUMBER	NOMENCLATURE	EFFECT CODE	UNITS PER ASSY
2			1234567		
170	3010566		.WASHER, PLAIN	A B C	2
180	3008787		.CONNECTOR, ROD END	A B C	2
- 180A	3006787		.CONNECTOR, ROD END	A B C	1
190	3012254		.NUT, PLAIN, DRD HEX REFER TO PARTS SUBSTITUTION LIST IN INTRODUCTION	A B C	2
200	3012536		.ROD, INTERNAL THD	A B C	1
210	3012385		.BOLT, MACHINE, HEX	A B C	1
220	MS9245-23		.PIN, COTTER	A B C	1
230	3011976		.NUT, CASTLE, HEX INTRCHG WITH P/N MS9358-09	A B C	1
- 230A	MS9358-09		.NUT, CASTLE, HEX	A B C	1
240	3010566		.WASHER, PLAIN	A B C	1
250	3009095		.ADJUSTER, LOW PITCH STOP	A B C	1
260	AN102806		.BOLT, MACHINE, DRD HEX INTRCHG WITH P/N MS9529-04	A B C	1
- 260A	MS9529-04		.BOLT, MACHINE, DRD HEX	A B C	1
270	MS9200-09		.NUT, PLAIN, HEX	A B C	1
- 280	3010621		.STOP, LOW PITCH ADJUSTING INTRCHG WITH P/N 3013164	A B	1

CONTINUED

- ITEM NOT ILLUSTRATED

EFF MODEL A PT6A-27 B PT6A-28 C PT6A-21	EFF MODEL	EFF MODEL
--	-----------	-----------

**76-10-00**  
**Figure 2**  
Page 5  
Aug 27/2004

**PRATT & WHITNEY CANADA**  
**ILLUSTRATED PARTS CATALOG**  
**MANUAL PART NO. 3013244**

FIG. ITEM	PART NUMBER	AIRLINE PART NUMBER	NOMENCLATURE	EFFECT CODE	UNITS PER ASSY
2			1234567		
280A	3013164		.STOP, LOW PITCH ADJUSTING	A B C	1
- 290	3013828		.CLEVIS ROD END INTRCHG WITH P/N 3017299	A B	1
290A	3017299		.CLEVIS ROD END POST-SB1119	A B C	1
300	MS9245-23		.PIN, COTTER	A B C	1
310	3011976		.NUT, CASTLE, HEX INTRCHG WITH P/N MS9358-09	A B C	1
- 310A	MS9358-09		.NUT, CASTLE, HEX	A B C	1
- 320	3012388		.BOLT, MACHINE, HEX INTRCHG WITH P/N 3013166	A B C	1
320A	3013166		.BOLT, MACHINE, HEX	A B C	1
330	3009087		.SPACER, SLEEVE	A B C	1
340	MS9245-23		.PIN, COTTER	A B C	1
350	MS9321-10		.WASHER, FLAT	A B C	1
- 360	3011534		.PIN, STRAIGHT HD INTRCHG WITH P/N 3013165	A B C	1
360A	3013165		.PIN, STRAIGHT HD	A B C	1
370	3011554		.BUSHING, SLEEVE	A B C	1
380	3012526		.LEVER, PROPELLER REVERSING	A B C	1

CONTINUED

- ITEM NOT ILLUSTRATED

EFF MODEL A PT6A-27 B PT6A-28 C PT6A-21	EFF MODEL	EFF MODEL
--	-----------	-----------

**76-10-00**

**Figure 2**

Page 6

Aug 27/2004

**PRATT & WHITNEY CANADA**  
**ILLUSTRATED PARTS CATALOG**  
**MANUAL PART NO. 3013244**

FIG. ITEM	PART NUMBER	AIRLINE PART NUMBER	NOMENCLATURE	EFFECT CODE	UNITS PER ASSY
2 390	3011543		1234567  .BRACKET ASSEMBLY, GUIDE PIN, REVERSING LEVER  <u>NOTE 1</u> : DELETED	A B C	1

- ITEM NOT ILLUSTRATED

EFF MODEL A PT6A-27 B PT6A-28 C PT6A-21	EFF MODEL	EFF MODEL
--	-----------	-----------

**76-10-00**  
**Figure 2**  
 Page 7/8  
 Aug 27/2004





Propeller Reversing Interconnect  
Linkage, Front, Alternate  
Force Link Arrangement

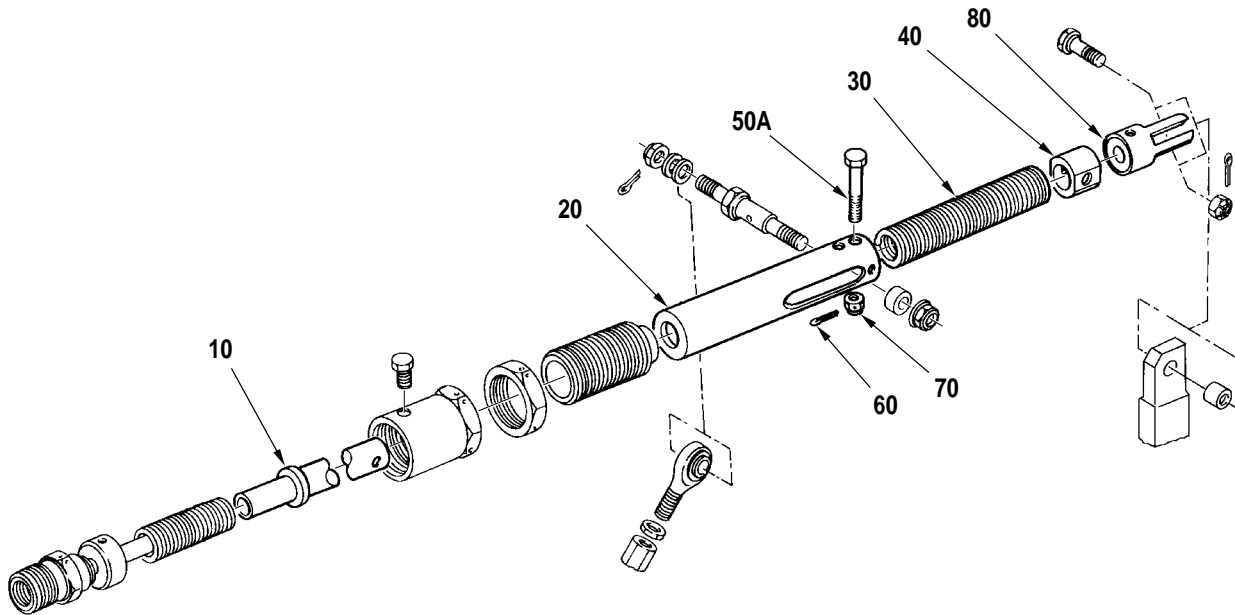
**76-10-00**

**Figure 3**

Page 1

Aug 27/2004

PRATT & WHITNEY CANADA  
ILLUSTRATED PARTS CATALOG  
MANUAL PART NO. 3013244



C52071

Propeller Reversing Interconnect Linkage, Front, Alternate  
Force Link Arrangement  
Figure 3

**76-10-00**

**Figure 3**

Page 2  
Aug 27/2004

**PRATT & WHITNEY CANADA**  
**ILLUSTRATED PARTS CATALOG**  
**MANUAL PART NO. 3013244**

FIG. ITEM	PART NUMBER	AIRLINE PART NUMBER	1234567 NOMENCLATURE	EFFECT CODE	UNITS PER ASSY
3					
- 1			PROPELLER REVERSING INTERCONNECT LINKAGE, FRONT, ALTERNATE FORCE LINK ARRANGEMENT SEE 72-00-00 FIG. 1 FOR NHA	A B	REF
10	3012538		. TERMINAL, WIRE ROPE, PUSH-PULL CONTROL FOR ENGINES BUILT TO BS307, BS321, BS414, BS624, BS801, BS877	A B	1
20	3012535		. HOUSING, PUSH-PULL CONTROL TERMINAL FOR ENGINES BUILT TO BS307, BS321, BS414, BS624, BS801, BS877	A B	1
30	3011545		. SPRING, HELICAL COMPRESSION FOR ENGINES BUILT TO BS307, BS321, BS414, BS624, BS801, BS877	A B	1
40	3012532		. SLEEVE, PUSH-PULL CONTROL TERMINAL FOR ENGINES BUILT TO BS307, BS321, BS414, BS624, BS801, BS877	A B	1
- 50	3013168		. BOLT, MACHINE, HEX INTRCHG WITH P/N 3013167	A B	1
50A	3013167		. BOLT, MACHINE, HEX FOR ENGINES BUILT TO BS307, BS321, BS414, BS624, BS801, BS877	A B	1
60	MS9245-23		. PIN, COTTER FOR ENGINES BUILT TO BS307, BS321, BS414, BS624, BS801, BS877	A B	1
70	3011976		. NUT, CASTLE, HEX INTRCHG WITH P/N MS9358-09	A B	1
- 70A	MS9358-09		. NUT, CASTLE, HEX FOR ENGINES BUILT TO BS307, BS321, BS414, BS624, BS801, BS877	A B	1
80	3012530		. CLEVIS, ROD END FOR ENGINES BUILT TO BS307, BS321, BS414, BS624, BS801, BS877	A B	1

- ITEM NOT ILLUSTRATED

EFF MODEL A PT6A-27 B PT6A-28	EFF MODEL	EFF MODEL
-------------------------------------	-----------	-----------

**76-10-00**  
**Figure 3**  
Page 3/4  
Aug 27/2004

