

PRATT & WHITNEY CANADA
ILLUSTRATED PARTS CATALOG
MANUAL PART NO. 3013244

LIST OF EFFECTIVE PAGES

<u>CHAPTER SECTION</u>	<u>PAGE</u>	<u>DATE</u>
LEP	1	Aug 27/2004
	2 blank	Aug 27/2004
Contents	1	Aug 27/2004
	2 blank	Aug 27/2004
73-20-00 Figure 1	1	Aug 27/2004
	2	Aug 27/2004
	3	Aug 27/2004
	4	Aug 27/2004
	5	Aug 27/2004
	6	Aug 27/2004
	7	Aug 27/2004
	8	Aug 27/2004
	9	Aug 27/2004
	10	Aug 27/2004
	11	Aug 27/2004
	12	Aug 27/2004
73-20-00 Figure 2	1	Aug 27/2004
	2	Aug 27/2004
	3	Aug 27/2004
	4	Aug 27/2004
	5	Aug 27/2004
	6 blank	Aug 27/2004

PRATT & WHITNEY CANADA
ILLUSTRATED PARTS CATALOG
MANUAL PART NO. 3013244

TABLE OF CONTENTS

<u>TITLE</u>	<u>CH/SE/SU</u>	<u>FIGURE</u>
Fuel Control Unit Installation Group (PT6A-21)	73-20-00	2
Fuel Control Unit Installation Group (PT6A-27/-28)	73-20-00	1

Fuel Control Unit Installation Group (PT6A-27/-28)

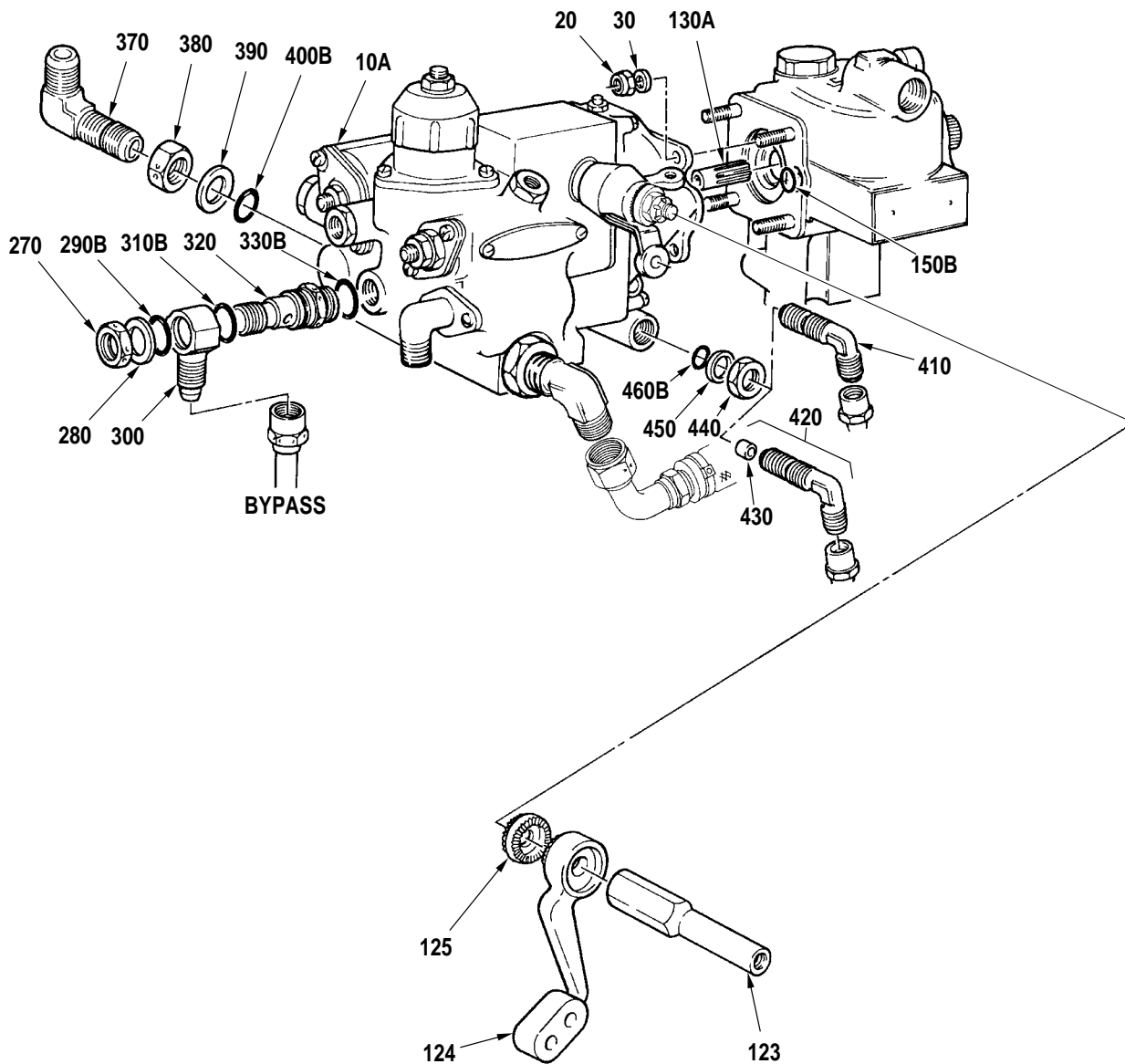
73-20-00

Figure 1

Page 1

Aug 27/2004

PRATT & WHITNEY CANADA
ILLUSTRATED PARTS CATALOG
MANUAL PART NO. 3013244



Fuel Control Unit Installation Group (PT6A-27/-28)
Figure 1

PRATT & WHITNEY CANADA
ILLUSTRATED PARTS CATALOG
MANUAL PART NO. 3013244

FIG. ITEM	PART NUMBER	AIRLINE PART NUMBER	NOMENCLATURE	EFFECT CODE	UNITS PER ASSY
1			1234567		
- 1			FUEL CONTROL UNIT INSTALLATION GROUP (PT6A-27/-28) SEE 72-00-00 FIG. 1 FOR NHA	A B	REF
- 10	2524281-1		. FUEL CONTROL UNIT, TURBOPROP, MODEL DP-F2 SUPPLIER CODE: 06848 P&WC P/N: 3011502 SEE NOTE 1 INTRCHG WITH P/N 2524440-4	A B	1
10A	2524440-4		. FUEL CONTROL UNIT, TURBOPROP, MODEL DP-F2 FOR ENGINES BUILT TO BS392, BS410, BS414, BS423, BS622, BS954 FOR ENGINES BUILT TO BS418, BS475, BS485, BS570, BS610 SUPPLIER CODE: 06848 P&WC P/N: 3015526C SEE NOTE 1 PRE-SB1578 INTRCHG WITH P/N 2524440-5 INTRCHG WITH P/N 2524440-9-(5-8)	A B	1
	2524440-9-(5-8)		. FUEL CONTROL-TURBOPROP REWORKED FROM P/N 2524440-4 POST-SB1578	A B	RWK
- 10B	2524440-5		. FUEL CONTROL UNIT, TURBOPROP, MODEL DP-F2 FOR ENGINES BUILT TO BS392, BS410, BS414, BS423, BS622, BS954 FOR ENGINES BUILT TO BS418, BS475, BS485, BS570, BS610 SUPPLIER CODE: 06848 P&WC P/N: 3015526E SEE NOTE 1 AND 2 PRE-SB1469 PRE-SB1475 PRE-SB1578 TWO-WAY INTRCHG WITH P/N 3244786-2 ONE-WAY INTRCHG WITH P/N 2524440-6 INTRCHG WITH P/N 2524440-9-(6-8)	A B	1
	2524440-9-(6-8)		. FUEL CONTROL-TURBOPROP REWORKED FROM P/N 2524440-5 POST-SB1578	A B	RWK

CONTINUED

- ITEM NOT ILLUSTRATED

EFF MODEL A PT6A-27 B PT6A-28	EFF MODEL	EFF MODEL
-------------------------------------	-----------	-----------

73-20-00
Figure 1
Page 3
Aug 27/2004

PRATT & WHITNEY CANADA
ILLUSTRATED PARTS CATALOG
MANUAL PART NO. 3013244

FIG. ITEM	PART NUMBER	AIRLINE PART NUMBER	NOMENCLATURE	EFFECT CODE	UNITS PER ASSY
1	- 10C	2524440-6	. FUEL CONTROL UNIT, TURBOPROP, MODEL DP-F2 FOR ENGINES BUILT TO BS392, BS410, BS414, BS423, BS622, BS954 FOR ENGINES BUILT TO BS418, BS475, BS485, BS570, BS610 SUPPLIER CODE: 06848 P&WC P/N: 3040402 SEE NOTE 1 AND 3 POST-SB1475 PRE-SB1561 PRE-SB1578 TWO-WAY INTRCHG WITH P/N 2524440-7 INTRCHG WITH P/N 2524440-9-(7-8)	A B	1
		2524440-9-(7-8)	. FUEL CONTROL-TURBOPROP REWORKED FROM P/N 2524440-6 POST-SB1578	A B	RWK
	- 10D	2524440-7	. FUEL CONTROL-TURBOPROP FOR ENGINES BUILT TO BS392, BS410, BS414, BS423, BS622, BS954 FOR ENGINES BUILT TO BS418, BS475, BS485, BS570, BS610 SUPPLIER CODE: 06848 P&WC P/N: 3045120-01 MAY BE OBTAINED BY REWORK OF P/N 2524440-6 SEE NOTE 1 POST-SB1561 PRE-SB1568 PRE-SB1578 TWO-WAY INTRCHG WITH P/N 2524440-8 INTRCHG WITH P/N 2524440-9-8	A B	1
		2524440-9-8	. FUEL CONTROL- TURBOPROP REWORKED FROM P/N 2524440-7 POST-SB1578	A B	RWK

CONTINUED

- ITEM NOT ILLUSTRATED

EFF MODEL A PT6A-27 B PT6A-28	EFF MODEL	EFF MODEL
-------------------------------------	-----------	-----------

73-20-00
Figure 1
Page 4
Aug 27/2004

PRATT & WHITNEY CANADA
ILLUSTRATED PARTS CATALOG
MANUAL PART NO. 3013244

FIG. ITEM	PART NUMBER	AIRLINE PART NUMBER	NOMENCLATURE	EFFECT CODE	UNITS PER ASSY
1			1234567		
- 10E	2524440-8		. FUEL CONTROL- TURBOPROP FOR ENGINES BUILT TO BS392, BS410, BS414, BS423, BS622, BS954 FOR ENGINES BUILT TO BS418, BS475, BS485, BS570, BS610 SUPPLIER CODE: 06848 P&WC P/N: 3049625-01 MAY BE OBTAINED BY REWORK OF P/N 2524440-7 SEE NOTE 1 POST-SB1568 PRE-SB1578 ONE-WAY INTRCHG WITH P/N 2524440-9	A B	1
- 10F	2524440-9		. FUEL CONTROL-TURBOPROP FOR ENGINES BUILT TO BS392, BS410, BS414, BS423, BS622, BS954 FOR ENGINES BUILT TO BS418, BS475, BS485, BS570, BS610 SUPPLIER CODE: 06848 P&WC P/N: 3049625-02 MAY BE OBTAINED BY REWORK OF P/N 2524440-8 SEE NOTE 1 POST-SB1578	A B	1
- 11	3244786-2		. FUEL CONTROL UNIT, TURBOPROP, MODEL DP-F2 FOR ENGINES BUILT TO BS624, BS877 SUPPLIER CODE: 06848 P&WC P/N: 3033367 SEE NOTE 4 POST-SB1469 PRE-SB1578 INTRCHG WITH P/N 3244786-3 INTRCHG WITH P/N 3244786-8-(3-7)	A B	1
	3244786-8-(3-7)		. FUEL CONTROL-TURBOPROP REWORKED FROM P/N 3244786-2 POST-SB1578	A B	RWK

CONTINUED

- ITEM NOT ILLUSTRATED

EFF MODEL A PT6A-27 B PT6A-28	EFF MODEL	EFF MODEL
-------------------------------------	-----------	-----------

73-20-00

Figure 1

Page 5

Aug 27/2004

PRATT & WHITNEY CANADA
ILLUSTRATED PARTS CATALOG
MANUAL PART NO. 3013244

FIG. ITEM	PART NUMBER	AIRLINE PART NUMBER	NOMENCLATURE	EFFECT CODE	UNITS PER ASSY
1			1234567		
- 11A	3244786-3		. FUEL CONTROL UNIT, TURBOPROP, MODEL DP-F2 FOR ENGINES BUILT TO BS624, BS877 SUPPLIER CODE: 06848 P&WC P/N: 3033367A SEE NOTE 4 PRE-SB1472 PRE-SB1578 TWO-WAY INTRCHG WITH P/N 3244786-5 INTRCHG WITH P/N 3244786-8-(4-7)	A B	1
	3244786-8-(4-7)		. FUEL CONTROL-TURBOPROP REWORKED FROM P/N 3244786-3 POST-SB1578	A B	RWK
- 11B	3244786-4		. FUEL CONTROL UNIT, TURBOPROP, MODEL DP-F2 FOR ENGINES BUILT TO BS624, BS877 SUPPLIER CODE: 06848 P&WC P/N: 3039070 SEE NOTE 4 PRE-SB1578 INTRCHG WITH P/N 3244786-8-(5-7)	A B	1
	3244786-8-(5-7)		. FUEL CONTROL-TURBOPROP REWORKED FROM P/N 3244786-4 POST-SB1578	A B	RWK
- 11C	3244786-5		. FUEL CONTROL UNIT, TURBOPROP, MODEL DP-F2 FOR ENGINES BUILT TO BS624, BS877 SUPPLIER CODE: 06848 P&WC P/N: 3040397 SEE NOTE 4 POST-SB1472 PRE-SB1561 PRE-SB1578 TWO-WAY INTRCHG WITH P/N 3244786-6 INTRCHG WITH P/N 3244786-8-(6-7)	A	1
	3244786-8-(6-7)		. FUEL CONTROL-TURBOPROP REWORKED FROM P/N 3244786-5 POST-SB1578	A	RWK

CONTINUED

- ITEM NOT ILLUSTRATED

EFF MODEL A PT6A-27 B PT6A-28	EFF MODEL	EFF MODEL
-------------------------------------	-----------	-----------

73-20-00
Figure 1
Page 6
Aug 27/2004

PRATT & WHITNEY CANADA
ILLUSTRATED PARTS CATALOG
MANUAL PART NO. 3013244

FIG. ITEM	PART NUMBER	AIRLINE PART NUMBER	1234567 NOMENCLATURE	EFFECT CODE	UNITS PER ASSY
1					
- 11D	3244786-6		. FUEL CONTROL-TURBOPROP FOR ENGINES BUILT TO BS624, BS877 SUPPLIER CODE: 06848 P&WC P/N: 3045133-01 MAY BE OBTAINED BY REWORK OF P/N 3244786-5 SEE NOTE 4 POST-SB1561 PRE-SB1568 PRE-SB1578 TWO-WAY INTRCHG WITH P/N 3244786-7 INTRCHG WITH P/N 3244786-8-7	A B	1
	3244786-8-7		. FUEL CONTROL-TURBOPROP REWORKED FROM P/N 3244786-6 POST-SB1578	A B	RWK
- 11E	3244786-7		. FUEL CONTROL-TURBOPROP FOR ENGINES BUILT TO BS624, BS877 FOR ENGINES BUILT TO BS801 SUPPLIER CODE: 06848 P&WC P/N: 3049635-01 MAY BE OBTAINED BY REWORK OF P/N 3244786-6 SEE NOTE 4 POST-SB1568 PRE-SB1578 ONE-WAY INTRCHG WITH P/N 3244786-8	A B	1
- 11F	3244786-8		. FUEL CONTROL-TURBOPROP FOR ENGINES BUILT TO BS624, BS877 FOR ENGINES BUILT TO BS801 SUPPLIER CODE: 06848 P&WC P/N: 3049635-02 MAY BE OBTAINED BY REWORK OF P/N 3244786-7 SEE NOTE 4 POST-SB1578	A B	1
- 12	3244872-1		. FUEL CONTROL UNIT, TURBOPROP FOR ENGINES BUILT TO BS801 SUPPLIER CODE: 06848 P&WC P/N: 3040059 SEE NOTE 5 PRE-SB1561 TWO-WAY INTRCHG WITH P/N 3244872-2	A	1

CONTINUED

- ITEM NOT ILLUSTRATED

EFF MODEL A PT6A-27 B PT6A-28	EFF MODEL	EFF MODEL
-------------------------------------	-----------	-----------

73-20-00
Figure 1
Page 7
Aug 27/2004

PRATT & WHITNEY CANADA
ILLUSTRATED PARTS CATALOG
MANUAL PART NO. 3013244

FIG. ITEM	PART NUMBER	AIRLINE PART NUMBER	NOMENCLATURE	EFFECT CODE	UNITS PER ASSY
			1234567		
1					
- 12A	3244872-2		. FUEL CONTROL-TURBOPROP FOR ENGINES BUILT TO BS801 SUPPLIER CODE: 06848 P&WC P/N: 3049944-01 MAY BE OBTAINED BY REWORK OF P/N 3244872-1 SEE NOTE 5 POST-SB1561 PRE-SB1568 TWO-WAY INTRCHG WITH P/N 3244872-3	A	1
- 12B	3244872-3		. FUEL CONTROL-TURBOPROP FOR ENGINES BUILT TO BS801 SUPPLIER CODE: 06848 P&WC P/N: 3049641-01 MAY BE OBTAINED BY REWORK OF P/N 3244872-2 SEE NOTE 5 POST-SB1568	A	1
			ATTACHING PARTS		
20	3012680		. NUT OPTION (IC) SEE TABLE FOR OPTIONAL PART NUMBERS	A B	4
30	MS9549-10		. WASHER, PLAIN	A B	4
			-----*-----		
40	DELETED				
50	DELETED				
60	DELETED				
70	DELETED				
80	DELETED				
90	DELETED				
100	DELETED				
110	DELETED				
120	DELETED				
123	3011292		. EXTENSION, FUEL CONTROL ARM	A B	1
124	3010466		. ARM, FUEL CONTROL UNIT INTRCHG WITH P/N 3028962	A B	1
CONTINUED					

- ITEM NOT ILLUSTRATED

EFF MODEL A PT6A-27 B PT6A-28	EFF MODEL	EFF MODEL
-------------------------------------	-----------	-----------

73-20-00
Figure 1
Page 8
Aug 27/2004

PRATT & WHITNEY CANADA
ILLUSTRATED PARTS CATALOG
MANUAL PART NO. 3013244

FIG. ITEM	PART NUMBER	AIRLINE PART NUMBER	NOMENCLATURE	EFFECT CODE	UNITS PER ASSY
1			1234567		
- 124A	3028962		.ARM, FUEL CONTROL UNIT FOR ENGINES BUILT TO BS307, BS321, BS325, BS330, BS362, BS367, BS374, BS393, BS410, BS414, BS423, BS622, BS624, BS801, BS877	A B	1
125	3010468		.SPACER, SERRATED, FCU ARM INTRCHG WITH P/N 3028963	A B	1
- 125A	3028963		.SPACER, SERRATED, FCU ARM	A B	1
- 130	3022139		.COUPLING, FUEL CONTROL UNIT TO FUEL PUMP INTRCHG WITH P/N 3024973	A B	1
130A	3024973		.COUPLING, FUEL CONTROL UNIT TO FUEL PUMP POST-SB1194	A B	1
140	NOT USED				
- 150	3001638		.PACKING, PREFORMED INTRCHG WITH P/N MS9388-012	A B	1
- 150A	MS9388-012		.PACKING, PREFORMED INTRCHG WITH P/N AS3209-012	A B	1
150B	AS3209-012		.PACKING, PREFORMED	A B	1
160	DELETED		TRANSFERRED TO 73-10-04 FIG. 1		
170	DELETED		TRANSFERRED TO 73-10-04 FIG. 1		
180	DELETED		TRANSFERRED TO 73-10-04 FIG. 1		
190	DELETED		TRANSFERRED TO 73-10-04 FIG. 1		
200	DELETED		TRANSFERRED TO 73-10-04 FIG. 1		
210	DELETED		TRANSFERRED TO 73-10-04 FIG. 1		
220	DELETED		TRANSFERRED TO 73-10-04 FIG. 1		
230	DELETED		TRANSFERRED TO 73-10-04 FIG. 1		
240	DELETED		TRANSFERRED TO 73-10-04 FIG. 1		
250	DELETED		TRANSFERRED TO 73-10-04 FIG. 1		
260	DELETED		TRANSFERRED TO 73-10-04 FIG. 1		
270	MS9100-04		.NUT, HEX, BOSS CONNECTION FOR ENGINES BUILT TO BS622, BS624, BS801, BS877, BS954	A B	1
280	MS9058-04		.RING, BACK-UP, BOSS CONNECTION FOR ENGINES BUILT TO BS622, BS624, BS801, BS877, BS954	A B	1

CONTINUED

- ITEM NOT ILLUSTRATED

EFF MODEL A PT6A-27 B PT6A-28	EFF MODEL	EFF MODEL
-------------------------------------	-----------	-----------

PRATT & WHITNEY CANADA
ILLUSTRATED PARTS CATALOG
MANUAL PART NO. 3013244

FIG. ITEM	PART NUMBER	AIRLINE PART NUMBER	NOMENCLATURE	EFFECT CODE	UNITS PER ASSY
			1234567		
1					
- 290	3007754		.PACKING, PREFORMED INTRCHG WITH P/N MS9387-04	A B	1
- 290A	MS9387-04		.PACKING, PREFORMED INTRCHG WITH P/N 3014223	A B	1
290B	3014223		.PACKING, PREFORMED FOR ENGINES BUILT TO BS622, BS624, BS801, BS877, BS954	A B	1
300	3011863		.CONNECTOR, MULTIPLE, FLUID LINE FOR ENGINES BUILT TO BS622, BS624, BS801, BS877, BS954	A B	1
- 310	3001639		.PACKING, PREFORMED INTRCHG WITH P/N MS9388-014	A B	1
- 310A	MS9388-014		.PACKING, PREFORMED INTRCHG WITH P/N AS3209-014	A B	1
- 310B	AS3209-014		.PACKING, PREFORMED	A B	1
- 310C	3014229		.PACKING, PREFORMED FOR ENGINES BUILT TO BS622, BS624, BS801, BS877, BS954	A	1
320	3011862		.BOLT, FLUID PASSAGE FOR ENGINES BUILT TO BS622, BS624, BS801, BS877, BS954	A B	1
- 330	3011811		.PACKING, PREFORMED INTRCHG WITH P/N MS9387-05	A B	1
- 330A	MS9387-05		.PACKING, PREFORMED INTRCHG WITH P/N 3014230	A B	1
330B	3014230		.PACKING, PREFORMED FOR ENGINES BUILT TO BS622, BS624, BS801, BS877, BS954	A B	1
340	DELETED		TRANSFERRED TO 73-10-04 FIG. 1		
350	DELETED		TRANSFERRED TO 73-10-04 FIG. 1		
360	DELETED		TRANSFERRED TO 73-10-04 FIG. 1		
370	MS9194-04		.ELBOW, ANGLE, 90-DEG, TUBE TO BOSS	A B	1
380	MS9100-04		.NUT, HEX, BOSS CONNECTION	A B	1
390	MS9058-04		.RING, BACK-UP, BOSS CONNECTION	A B	1
- 400	3007754		.PACKING, PREFORMED INTRCHG WITH P/N MS9387-04	A B	1
- 400A	MS9387-04		.PACKING, PREFORMED INTRCHG WITH P/N 3014223	A B	1

CONTINUED

- ITEM NOT ILLUSTRATED

EFF MODEL A PT6A-27 B PT6A-28	EFF MODEL	EFF MODEL
-------------------------------------	-----------	-----------

73-20-00

Figure 1

Page 10

Aug 27/2004

PRATT & WHITNEY CANADA
ILLUSTRATED PARTS CATALOG
MANUAL PART NO. 3013244

FIG. ITEM	PART NUMBER	AIRLINE PART NUMBER	1234567 NOMENCLATURE	EFFECT CODE	UNITS PER ASSY
1					
400B	3014223		.PACKING, PREFORMED	A B	1
410	MS9194-04		.ELBOW, ANGLE, 90-DEG, TUBE TO BOSS (ENGINES WITH TEMPERATURE COMPENSATOR) PRE-SB1123	A B	1
420	3014214		.ELBOW ASSEMBLY, COMPRESSOR DELIVERY LINE, FOR ENGINES BUILT TO BS622, BS624, BS801, BS877, BS954 (ENGINES WITHOUT TEMPERATURE COMPENSATOR) POST-SB1123	A B	1
430	3014212		..PLUG, METERING FOR ENGINES BUILT TO BS622, BS624, BS801, BS877, BS954	A B	1
440	MS9100-04		.NUT, HEX, BOSS CONNECTION FOR ENGINES BUILT TO BS622, BS624, BS801, BS877, BS954	A B	1
450	MS9058-04		.RING, BACK-UP, BOSS CONNECTION FOR ENGINES BUILT TO BS622, BS624, BS801, BS877, BS954	A B	1
- 460	3007754		.PACKING, PREFORMED INTRCHG WITH P/N MS9387-04	A B	1
- 460A	MS9387-04		.PACKING, PREFORMED INTRCHG WITH P/N 3014223	A B	1
460B	3014223		.PACKING, PREFORMED FOR ENGINES BUILT TO BS622, BS624, BS801, BS877, BS954	A B	1
			NOTE 1: FOR COMPLETE BREAKDOWN AND ADDITIONAL INFORMATION REFER TO HONEYWELL ACCESSORY OVERHAUL MANUAL AND IPL P/N 73-20-31		
			NOTE 2: ALSO SUPERSEDES EARLIER DASH NOS OF 2524440-4		
			NOTE 3: OLD PART ONLY REPLACES OLD PART, NEW PART ONLY REPLACES NEW PART		
CONTINUED					

- ITEM NOT ILLUSTRATED

EFF MODEL A PT6A-27 B PT6A-28	EFF MODEL	EFF MODEL
-------------------------------------	-----------	-----------

73-20-00

Figure 1

Page 11

Aug 27/2004

PRATT & WHITNEY CANADA
ILLUSTRATED PARTS CATALOG
MANUAL PART NO. 3013244

FIG. ITEM	PART NUMBER	AIRLINE PART NUMBER	1234567 NOMENCLATURE	EFFECT CODE	UNITS PER ASSY
1			<p><u>NOTE 4</u>: FOR COMPLETE BREAKDOWN AND ADDITIONAL INFORMATION REFER TO HONEYWELL ACCESSORY OVERHAUL MANUAL AND IPL P/N 73-20-43</p> <p><u>NOTE 5</u>: FOR COMPLETE BREAKDOWN AND ADDITIONAL INFORMATION REFER TO HONEYWELL ACCESSORY OVERHAUL MANUAL AND IPL P/N 73-20-72</p>		

- ITEM NOT ILLUSTRATED

EFF MODEL	EFF MODEL	EFF MODEL
-----------	-----------	-----------

73-20-00

Figure 1

Page 12

Aug 27/2004

Fuel Control Unit Installation Group (PT6A-21)

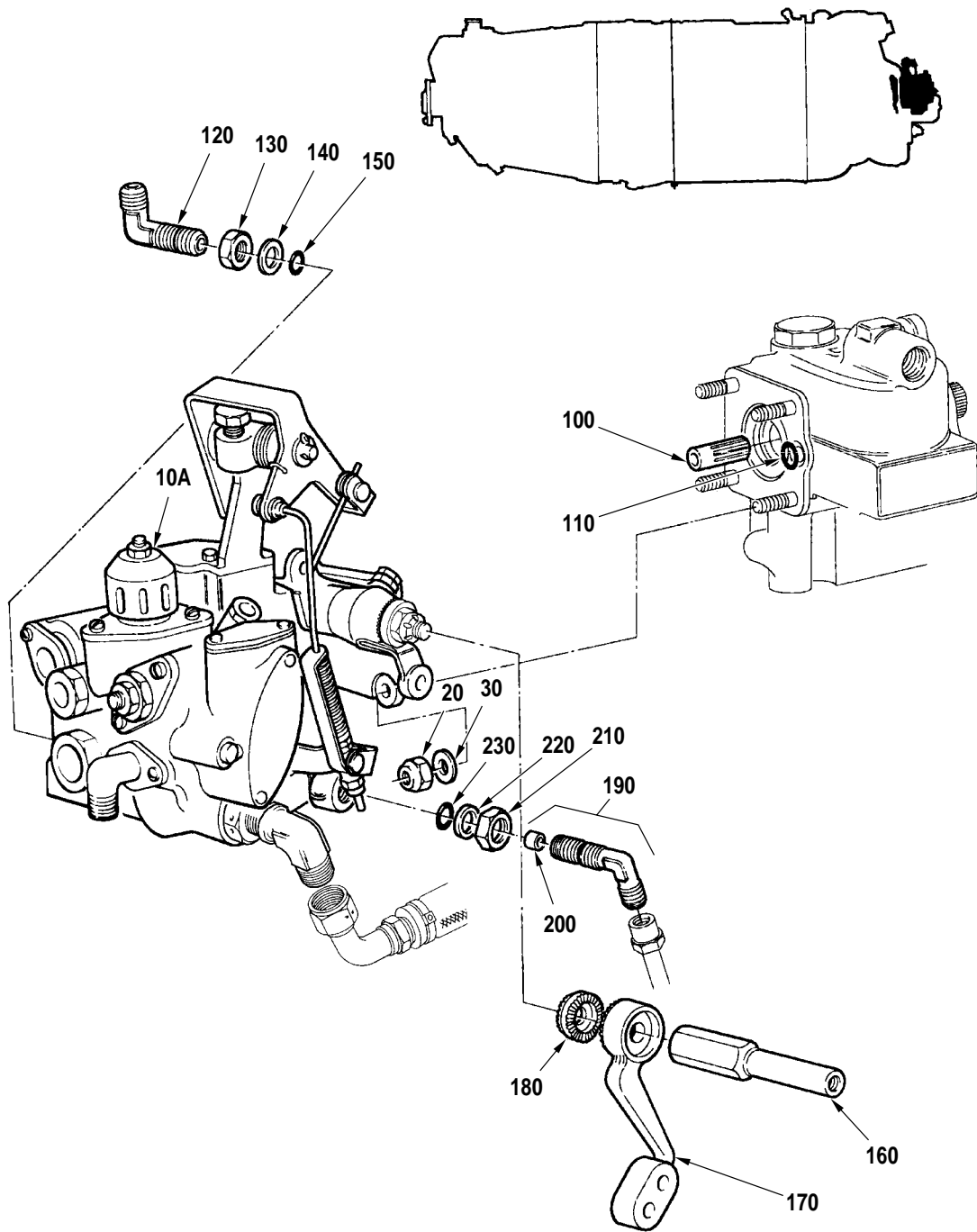
73-20-00

Figure 2

Page 1

Aug 27/2004

PRATT & WHITNEY CANADA
ILLUSTRATED PARTS CATALOG
MANUAL PART NO. 3013244



Fuel Control Unit Installation Group (PT6A-21)
Figure 2

PRATT & WHITNEY CANADA
ILLUSTRATED PARTS CATALOG
MANUAL PART NO. 3013244

FIG. ITEM	PART NUMBER	AIRLINE PART NUMBER	1234567 NOMENCLATURE	EFFECT CODE	UNITS PER ASSY
2					
- 1			FUEL CONTROL UNIT INSTALLATION GROUP (PT6A-21) SEE 72-00-00 FIG. 1 FOR NHA	C	REF
- 10	3244745-1		. FUEL CONTROL UNIT, TURBOPROP, MODEL DP-F2, FOR ENGINES BUILT TO BS486, BS571, BS671, BS788 SUPPLIER CODE: 06848 P&WC P/N: 3027049 INTRCHG WITH P/N 3027049A	C	1
10A	3244745-2		. FUEL CONTROL UNIT, TURBOPROP, MODEL DP-F2 FOR ENGINES BUILT TO BS486, BS571, BS671, BS788 SUPPLIER CODE: 06848 P&WC P/N: 3027049A SEE NOTE 1 PRE-SB1561 TWO-WAY INTRCHG WITH P/N 3244745-3	C	1
- 10B	3244745-3		. FUEL CONTROL UNIT, TURBOPROP, MODEL DP-F2 FOR ENGINES BUILT TO BS486, BS571, BS671, BS788 SUPPLIER CODE: 06848 P&WC P/N: 3045123-01 MAY BE OBTAINED BY REWORK OF P/N 3244745-2 POST-SB1561 PRE-SB1568 TWO-WAY INTRCHG WITH P/N 3244745-4	C	1
- 10C	3244745-4		. FUEL CONTROL UNIT, TURBOPROP, MODEL DP-F2 FOR ENGINES BUILT TO BS486, BS571, BS671, BS788 SUPPLIER CODE: 06848 P&WC P/N: 3049652-01 MAY BE OBTAINED BY REWORK OF P/N 3244745-3 POST-SB1568	C	1
- 11	3244775-5		. FUEL CONTROL UNIT, TURBOPROP FOR ENGINES BUILT TO BS1141 SUPPLIER CODE: 06848 P&WC P/N: 3039071 PRE-SB1561 TWO-WAY INTRCHG WITH P/N 3244775-6	C	1

CONTINUED

- ITEM NOT ILLUSTRATED

EFF MODEL C PT6A-21	EFF MODEL	EFF MODEL
------------------------	-----------	-----------

73-20-00
Figure 2
Page 3
Aug 27/2004

PRATT & WHITNEY CANADA
ILLUSTRATED PARTS CATALOG
MANUAL PART NO. 3013244

FIG. ITEM	PART NUMBER	AIRLINE PART NUMBER	NOMENCLATURE	EFFECT CODE	UNITS PER ASSY
			1234567		
2					
- 11A	3244775-6		. FUEL CONTROL UNIT, TURBOPROP FOR ENGINES BUILT TO BS1141 SUPPLIER CODE: 06848 P&WC P/N: 3045131-01 MAY BE OBTAINED BY REWORK OF P/N 3244775-5 POST-SB1561 PRE-SB1568 TWO-WAY INTRCHG WITH P/N 3244775-7	C	1
- 11B	3244775-7		. FUEL CONTROL UNIT, TURBOPROP FOR ENGINES BUILT TO BS1141 SUPPLIER CODE: 06848 P&WC P/N: 3049633-01 MAY BE OBTAINED BY REWORK OF P/N 3244775-6 POST-SB1568	C	1
			ATTACHING PARTS		
20	3012680		. NUT OPTION (IC) SEE TABLE FOR OPTIONAL PART NUMBERS	C	4
30	MS9549-10		. WASHER, FLAT -----*-----	C	4
40	DELETED				
50	DELETED				
60	DELETED				
64	DELETED				
65	DELETED				
66	DELETED				
67	DELETED				
68	DELETED				
69	DELETED				
70	DELETED				
80	DELETED				
90	DELETED				
- 91	2538097		. SPRING	C	1
- 92	2538096		. GUIDE, SPRING	C	1
100	3024973		. COUPLING, FUEL CONTROL TO FUEL PUMP	C	1
110	3014222		. PACKING, PREFORMED	C	1

CONTINUED

- ITEM NOT ILLUSTRATED

EFF MODEL C PT6A-21	EFF MODEL	EFF MODEL
------------------------	-----------	-----------

73-20-00

Figure 2

Page 4

Aug 27/2004

PRATT & WHITNEY CANADA
ILLUSTRATED PARTS CATALOG
MANUAL PART NO. 3013244

FIG. ITEM	PART NUMBER	AIRLINE PART NUMBER	1234567 NOMENCLATURE	EFFECT CODE	UNITS PER ASSY
2					
120	MS9194-04		.ELBOW, ANGLE, 90-DEG, TUBE TO BOSS	C	1
130	MS9100-04		.NUT, HEXAGON, BOSS CONNECTION	C	2
140	MS9058-04		.RING, BACK-UP, BOSS CONNECTION	C	2
150	3014223		.PACKING, PREFORMED	C	2
160	3011292		.EXTENSION, FUEL CONTROL ARM	C	1
170	3010466		.ARM, FUEL CONTROL UNIT INTRCHG WITH P/N 3028962	C	1
- 170A	3028962		.ARM, FUEL CONTROL UNIT	C	1
180	3010468		.SPACER, SERRATED, FCU ARM INTRCHG WITH P/N 3028963	C	1
- 180A	3028963		.SPACER, SERRATED, FCU ARM	C	1
190	3014214		.ELBOW ASSEMBLY, COMPRESSOR DELIVERY LINE	C	1
200	3014212		..PLUG, METERING	C	1
210	MS9100-04		.NUT, HEX, BOSS CONNECTION	C	1
220	MS9058-04		.RING, BACK-UP, BOSS CONNECTION	C	1
230	3014223		.PACKING, PREFORMED	C	1
			<u>NOTE 1:</u> FOR COMPLETE BREAKDOWN AND ADDITIONAL INFORMATION REFER TO HONEYWELL ACCESSORY OVERHAUL MANUAL P/N 73-20-15		

- ITEM NOT ILLUSTRATED

EFF MODEL C PT6A-21	EFF MODEL	EFF MODEL
------------------------	-----------	-----------

73-20-00
Figure 2
Page 5/6
Aug 27/2004

