

PRATT & WHITNEY CANADA
ILLUSTRATED PARTS CATALOG
MANUAL PART NO. 3013244

LIST OF EFFECTIVE PAGES

<u>CHAPTER SECTION</u>	<u>PAGE</u>	<u>DATE</u>
LEP	1	Nov 26/2004
	2 blank	Nov 26/2004
Contents	1	Nov 26/2004
	2 blank	Nov 26/2004
72-20-00 Figure 1	1	Nov 26/2004
	2	Nov 26/2004
	3	Nov 26/2004
	4	Nov 26/2004
	5	Nov 26/2004
	6	Nov 26/2004
72-20-00 Figure 2	1	Aug 27/2004
	2	Aug 27/2004
	3	Aug 27/2004
	4	Aug 27/2004
	5	Aug 27/2004
	6	Aug 27/2004
	7	Aug 27/2004
	8	Aug 27/2004
	9	Aug 27/2004
	10	Aug 27/2004
72-20-00 Figure 3	1	Aug 27/2004
	2	Aug 27/2004
	3	Aug 27/2004
	4	Aug 27/2004
	5	Aug 27/2004
	6 blank	Aug 27/2004

PRATT & WHITNEY CANADA
ILLUSTRATED PARTS CATALOG
MANUAL PART NO. 3013244

TABLE OF CONTENTS

<u>TITLE</u>	<u>CH/SE/SU</u>	<u>FIGURE</u>
Air Inlet Screen And Compressor Inlet Fairing Installation	72-20-00	1
Case Assembly, Compressor Inlet	72-20-00	3
Compressor Inlet Case Components Group	72-20-00	2

Air Inlet Screen And Compressor Inlet Fairing Installation

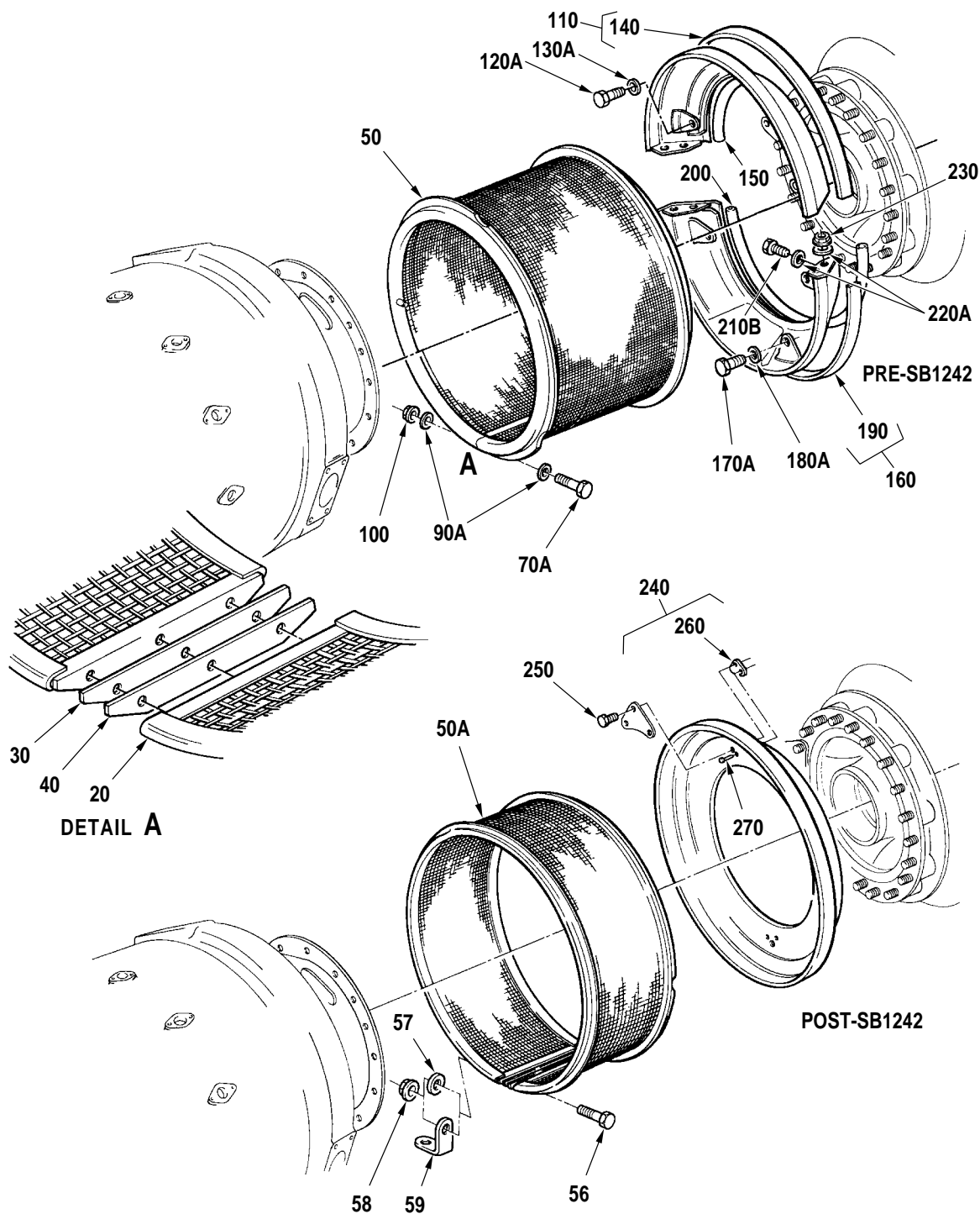
72-20-00

Figure 1

Page 1

Nov 26/2004

PRATT & WHITNEY CANADA
ILLUSTRATED PARTS CATALOG
MANUAL PART NO. 3013244



C52030A

Air Inlet Screen And Compressor Inlet Fairing Installation
Figure 1

72-20-00

Figure 1

Page 2

Nov 26/2004

PRATT & WHITNEY CANADA
ILLUSTRATED PARTS CATALOG
MANUAL PART NO. 3013244

FIG. ITEM	PART NUMBER	AIRLINE PART NUMBER	NOMENCLATURE	EFFECT CODE	UNITS PER ASSY
1			1234567		
1			AIR INLET SCREEN AND COMPRESSOR INLET FAIRING INSTALLATION SEE 72-00-00 FIG. 1 FOR NHA	A B C	REF
- 10	3012909		.SCREEN, AIR INLET (STANDARD MESH) PRE-SB1191 INTRCHG WITH P/N 3023608 INTRCHG WITH P/N 3023609	A B	1
- 10A	3009499		.SCREEN, AIR INLET FOR ENGINES BUILT TO BS624, BS877 (ALTERNATE, FINE PERFORATED) SEE NOTE 1	A B	1
20	3023609		.SCREEN, AIR INLET REWORKED FROM P/N 3012909 POST-SB1191	A B	RWK
30	3023607		..SPACER, AIR INLET SCREEN	A B	AR
40	3023606		..SPACER AIR INLET SCREEN	A B	AR
50	3023608		.SCREEN, AIR INLET POST-SB1191 PRE-SB1466 NONINTR WITH P/N 3023695	A B	1
50A	3023695		.SCREEN, AIR INLET POST-SB1242 PRE-SB1466 INTRCHG WITH P/N 3112496-01	A B C	1
- 50B	3112496-01		.SCREEN, AIR INLET FOR ENGINES BUILT TO BS622 POST-SB1466 NONINTR WITH P/N 3112498-01	A B C	1
- 50C	3112498-01		.SCREEN, AIR INLET POST-SB1466	A B	1
56	MS9518-15		.BOLT, MACHINE, HEX FOR ENGINES BUILT TO BS622	A B C	2
57	MS9320-09		.WASHER, FLAT FOR ENGINES BUILT TO BS622 (ONE FITTED TO PT6A-21) PRE-SB1621	A B C	2
- 57A	DELETED		POST-SB1621		

CONTINUED

- ITEM NOT ILLUSTRATED

EFF MODEL A PT6A-27 B PT6A-28 C PT6A-21	EFF MODEL	EFF MODEL
--	-----------	-----------

72-20-00

Figure 1

Page 3

Nov 26/2004

PRATT & WHITNEY CANADA
ILLUSTRATED PARTS CATALOG
MANUAL PART NO. 3013244

FIG. ITEM	PART NUMBER	AIRLINE PART NUMBER	NOMENCLATURE	EFFECT CODE	UNITS PER ASSY
1			1234567		
58	3012675		.NUT OPTION (IC) FOR ENGINES BUILT TO BS622 SEE TABLE FOR OPTIONAL PART NUMBERS	A B C	2
59	MS9228-05		.BRACKET, ANGLE, 90-DEG INTRCHG WITH P/N MS9600-054	C	1
- 59A	MS9600-054		.BRACKET, ANGLE, 90-DEG	C	1
- 59B	MS9592-128		.BRACKET, ANGLE, 90-DEG FOR ENGINES BUILT TO BS801	A	1
60	DELETED				
- 70	3012368		.BOLT, MACHINE, HEX PRE-SB1242	A	3
70A	MS9518-15		.BOLT, MACHINE, HEX FOR ENGINES BUILT TO BS624, BS877 PRE-SB1242	A B	3
- 80	MS9518-17		.BOLT, MACHINE, HEX USE WITH P/N 3023609	A B	AR
- 80A	MS9518-22		.BOLT, MACHINE, HEX ALTERNATE TO MS9518-17	A B	AR
- 90	AN122581		.WASHER, FLAT PRE-SB1242	A B	6
90A	MS9320-09		.WASHER, FLAT FOR ENGINES BUILT TO BS624, BS877 PRE-SB1242	A B	6
100	3012675		.NUT OPTION (IC) FOR ENGINES BUILT TO BS624, BS877 SEE TABLE FOR OPTIONAL PART NUMBERS PRE-SB1242	A B	3
110	3013258		.FAIRING ASSEMBLY, COMPRESSOR INLET HALF PRE-SB1242 ATTACHING PARTS	A B	1
- 120	3012358		.BOLT, MACHINE, HEX PRE-SB1242 INTRCHG WITH P/N MS9518-06	A B	3
120A	MS9518-06		.BOLT, MACHINE, HEX PRE-SB1242	A B	3
- 130	AN122581		.WASHER, FLAT PRE-SB1242 INTRCHG WITH P/N MS9320-09	A B	3

CONTINUED

- ITEM NOT ILLUSTRATED

EFF MODEL A PT6A-27 B PT6A-28 C PT6A-21	EFF MODEL	EFF MODEL
--	-----------	-----------

72-20-00

Figure 1

Page 4

Nov 26/2004

PRATT & WHITNEY CANADA
ILLUSTRATED PARTS CATALOG
MANUAL PART NO. 3013244

FIG. ITEM	PART NUMBER	AIRLINE PART NUMBER	NOMENCLATURE	EFFECT CODE	UNITS PER ASSY
1			1234567		
130A	MS9320-09		.WASHER, FLAT PRE-SB1242 -----*-----	A B	3
140	3013255		..STRIP, SEALING PRE-SB1242	A B	1
150	3012406		..CUSHION, RUBBER APPROX. 24 IN. PRE-SB1242	A B	AR
160	3012894		.FAIRING ASSEMBLY, COMPRESSOR INLET HALF PRE-SB1242 ATTACHING PARTS	A B	1
- 170	3012358		..BOLT, MACHINE, HEX PRE-SB1242 INTRCHG WITH P/N MS9518-06	A B	3
170A	MS9518-06		..BOLT, MACHINE, HEX PRE-SB1242	A B	3
- 180	AN122581		..WASHER, FLAT PRE-SB1242 INTRCHG WITH P/N MS9320-09	A B	3
180A	MS9320-09		..WASHER, FLAT PRE-SB1242	A B	3
190	3012888		..STRIP, SEALING PRE-SB1242	A B	1
200	3012406		..CUSHION, RUBBER PRE-SB1242	A B	AR
- 210	3012216		..BOLT, MACHINE, HEX PRE-SB1242 INTRCHG WITH P/N 3012366	A B	4
- 210A	3012366		..BOLT, MACHINE, HEX PRE-SB1242 INTRCHG WITH P/N MS9518-08	A B	4
210B	MS9518-08		..BOLT, MACHINE, HEX PRE-SB1242	A B	4
- 220	AN122581		..WASHER, FLAT PRE-SB1242 INTRCHG WITH P/N MS9320-09	A B	4
220A	MS9320-09		..WASHER, FLAT PRE-SB1242	A B	4

CONTINUED

- ITEM NOT ILLUSTRATED

EFF MODEL A PT6A-27 B PT6A-28	EFF MODEL	EFF MODEL
-------------------------------------	-----------	-----------

72-20-00

Figure 1

Page 5

Nov 26/2004

PRATT & WHITNEY CANADA
ILLUSTRATED PARTS CATALOG
MANUAL PART NO. 3013244

FIG. ITEM	PART NUMBER	AIRLINE PART NUMBER	1234567 NOMENCLATURE	EFFECT CODE	UNITS PER ASSY
1					
230	3012675		..NUT OPTION (IC) SEE TABLE FOR OPTIONAL PART NUMBERS PRE-SB1242 -----*-----	A B	4
240	3016956		.FAIRING ASSEMBLY, COMPRESSOR INLET FOR ENGINES BUILT TO BS622 POST-SB1242 ATTACHING PARTS	A B C	1
250	MS9518-04		..BOLT, MACHINE, HEX FOR ENGINES BUILT TO BS622 POST-SB1242	A B C	6
260	3016611		..NUT OPTION (IC) FOR ENGINES BUILT TO BS622 SEE TABLE FOR OPTIONAL PART NUMBERS POST-SB1242	A B C	6
270	AS125121		..RIVET, CSK, HD FOR ENGINES BUILT TO BS622 POST-SB1242 -----*----- <u>NOTE 1:</u> COMPRESSOR INLET FAIRINGS AND BRACKETS ARE NOT REQUIRED WHEN THIS AIR INLET SCREEN P/N 3009499 IS INSTALLED (REF SPD 371) <u>NOTE 2:</u> INLET SCREEN P/N 3009499 NOT AVAILABLE FOR USE AS SPARES FOR DEHAVILLAND DHC-6 INSTALLATIONS	A B C	12

- ITEM NOT ILLUSTRATED

EFF MODEL A PT6A-27 B PT6A-28 C PT6A-21	EFF MODEL	EFF MODEL
--	-----------	-----------

72-20-00

Figure 1

Page 6

Nov 26/2004

Compressor Inlet Case Components Group

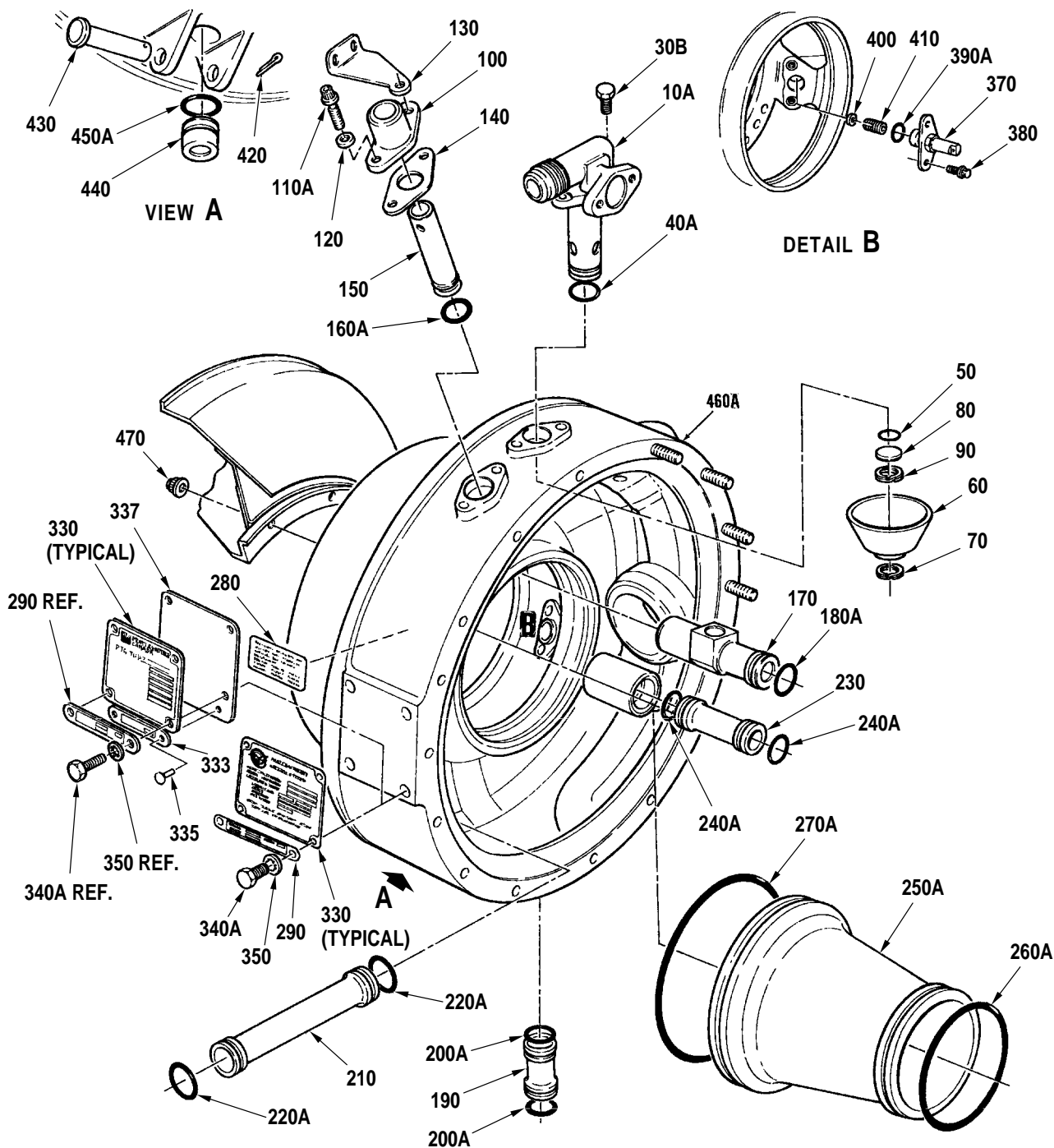
72-20-00

Figure 2

Page 1

Aug 27/2004

PRATT & WHITNEY CANADA
 ILLUSTRATED PARTS CATALOG
 MANUAL PART NO. 3013244



Compressor Inlet Case Components Group
 Figure 2

PRATT & WHITNEY CANADA
ILLUSTRATED PARTS CATALOG
MANUAL PART NO. 3013244

FIG. ITEM	PART NUMBER	AIRLINE PART NUMBER	NOMENCLATURE	EFFECT CODE	UNITS PER ASSY
2			1234567		
- 1			COMPRESSOR INLET CASE COMPONENTS GROUP SEE 72-00-00 FIG. 1 FOR NHA	A B C	REF
- 10	3012337		.ADAPTER, OIL TANK PRE-SB1108 NONINTR WITH P/N 3013305	A B	1
10A	3013305		.ADAPTER, OIL TANK POST-SB1108	A B C	1
- 20	3018991		.ADAPTER, OIL TANK POST-SB1108 (FOR PT6A-27 FAIRCHILD HILLER ONLY)	A	1
- 30	3011978		ATTACHING PARTS .BOLT, MACHINE, HEX INTRCHG WITH P/N 3012369	A B C	2
- 30A	3012369		.BOLT, MACHINE, HEX INTRCHG WITH P/N MS9529-06	A B C	2
30B	MS9529-06		.BOLT, MACHINE, HEX	A B C	2
- 40	3001642		-----*----- .PACKING, PREFORMED INTRCHG WITH P/N MS9388-018	A B C	1
40A	MS9388-018		.PACKING, PREFORMED INTRCHG WITH P/N AS3209-018	A B C	1
- 40B	AS3209-018		.PACKING, PREFORMED	A B C	1
50	MS9388-017		.PACKING, PREFORMED INTRCHG WITH P/N AS3209-017 SEE NOTE 2	A B C	1
- 50A	AS3209-017		.PACKING, PREFORMED SEE NOTE 2	A B C	1
60	3013306		.TRAY, OIL DE-AERATOR SEE NOTE 2	A B C	1

CONTINUED

- ITEM NOT ILLUSTRATED

EFF MODEL A PT6A-27 B PT6A-28 C PT6A-21	EFF MODEL	EFF MODEL
--	-----------	-----------

72-20-00
Figure 2
Page 3
Aug 27/2004

PRATT & WHITNEY CANADA
ILLUSTRATED PARTS CATALOG
MANUAL PART NO. 3013244

FIG. ITEM	PART NUMBER	AIRLINE PART NUMBER	NOMENCLATURE	EFFECT CODE	UNITS PER ASSY
2			1234567		
70	3013295		.RING-RETAINING SEE NOTE 3	A B C	1
80	3013294		.PLUG, PLAIN	A B C	1
90	3006110		.RING, RETAINING INTRCHG WITH P/N AS3217-106	A B C	1
- 90A	AS3217-106		.RING, RETAINING	A B C	1
100	3008144		.CAP, TUBE INLET CASE BREATHER BOSS	A B C	1
			ATTACHING PARTS		
- 110	3012382		.BOLT, MACHINE, DRD, DBL HEX INTRCHG WITH P/N MS9923-05	A B C	2
110A	MS9923-05		.BOLT, MACHINE, DRD, DBL HEX	A B C	2
120	3001564		.WASHER, PLAIN	A B C	2
			-----*-----		
130	3008280		.BRACKET 90 ANGLE, FIRESEAL LOCATING, TOP	A B C	1
140	3009558		.GASKET, BREATHER CAP PRE-SB1490 TWO-WAY INTRCHG WITH P/N 3039939	A B C	1
- 140A	3039939		.GASKET, BREATHER CAP POST-SB1490	A B C	1
150	3008146		.TUBE, TRANSFER	A B C	1
- 160	3001640		.PACKING, PREFORMED INTRCHG WITH P/N MS9388-016	A B C	1
160A	MS9388-016		.PACKING, PREFORMED INTRCHG WITH P/N AS3209-016	A B C	1

CONTINUED

- ITEM NOT ILLUSTRATED

EFF MODEL A PT6A-27 B PT6A-28 C PT6A-21	EFF MODEL	EFF MODEL
--	-----------	-----------

72-20-00
Figure 2
Page 4
Aug 27/2004

PRATT & WHITNEY CANADA
ILLUSTRATED PARTS CATALOG
MANUAL PART NO. 3013244

FIG. ITEM	PART NUMBER	AIRLINE PART NUMBER	1234567 NOMENCLATURE	EFFECT CODE	UNITS PER ASSY
2					
- 160B	AS3209-016		.PACKING, PREFORMED	A B C	1
170	3008145		.TUBE, ACCESSORY GEARBOX BREATHER	A B C	1
- 180	3001643		.PACKING, PREFORMED INTRCHG WITH P/N MS9388-020	A B C	1
180A	MS9388-020		.PACKING, PREFORMED INTRCHG WITH P/N AS3209-020	A B C	1
- 180B	AS3209-020		.PACKING, PREFORMED	A B C	1
- 185	3120991-01		.KIT, CONVERSION FOR ENGINES BUILT TO BS877 SEE NOTE 3 PRE-PT6A SPB NO.80 TWO-WAY INTRCHG WITH P/N 3054864-01	A	1
- 185A	3054864-01		.CONVERSION KIT POST-PT6A SPB NO.80	A	1
190	3004086		.TUBE, TRANSFER	A B C	1
- 200	3001640		.PACKING, PREFORMED INTRCHG WITH P/N MS9388-016	A B C	2
200A	MS9388-016		.PACKING, PREFORMED INTRCHG WITH P/N AS3209-016	A B C	2
- 200B	AS3209-016		.PACKING, PREFORMED	A B C	2
210	3003526		.TUBE, TRANSFER	A B C	1
- 220	3001643		.PACKING, PREFORMED INTRCHG WITH P/N MS9388-020	A B C	2
220A	MS9388-020		.PACKING, PREFORMED INTRCHG WITH P/N AS3209-020	A B C	2

CONTINUED

- ITEM NOT ILLUSTRATED

EFF MODEL A PT6A-27 B PT6A-28 C PT6A-21	EFF MODEL	EFF MODEL
--	-----------	-----------

PRATT & WHITNEY CANADA
ILLUSTRATED PARTS CATALOG
MANUAL PART NO. 3013244

FIG. ITEM	PART NUMBER	AIRLINE PART NUMBER	NOMENCLATURE	EFFECT CODE	UNITS PER ASSY
2			1234567		
- 220B	AS3209-020		.PACKING, PREFORMED	A B C	2
230	3012491		.TUBE, TRANSFER, PACKING 0.525 X 1.185	A B C	1
- 240	3001640		.PACKING, PREFORMED INTRCHG WITH P/N MS9388-016	A B C	2
240A	MS9388-016		.PACKING, PREFORMED INTRCHG WITH P/N AS3209-016	A B C	2
- 240B	AS3209-016		.PACKING, PREFORMED	A B C	2
- 250	3007024		.TUBE, CENTER, OIL TANK INTRCHG WITH P/N 3024133	A B	1
250A	3024133		.TUBE, CENTER, OIL TANK	A B C	1
- 260	3001576		.PACKING, PREFORMED INTRCHG WITH P/N MS9388-036	A B C	1
260A	MS9388-036		.PACKING, PREFORMED	A B C	1
- 260B	AS3209-036		.PACKING, PREFORMED	A B C	1
- 270	3003099		.PACKING, PREFORMED INTRCHG WITH P/N MS9388-045	A B C	1
270A	MS9388-045		.PACKING, PREFORMED INTRCHG WITH P/N AS3209-045	A B C	1
- 270B	AS3209-045		.PACKING, PREFORMED	A B C	1
280	3014017		.DECAL, DESIGNATION, PATENTS	A B C	1
290	3009171		.PLATE, INSTRUCTION, TRIM SPEED	A B	1
- 300	DELETED		TRANSFERRED TO ITEM 330		

CONTINUED

- ITEM NOT ILLUSTRATED

EFF MODEL A PT6A-27 B PT6A-28 C PT6A-21	EFF MODEL	EFF MODEL
--	-----------	-----------

72-20-00
Figure 2
Page 6
Aug 27/2004

PRATT & WHITNEY CANADA
ILLUSTRATED PARTS CATALOG
MANUAL PART NO. 3013244

FIG. ITEM	PART NUMBER	AIRLINE PART NUMBER	1234567 NOMENCLATURE	EFFECT CODE	UNITS PER ASSY
2					
- 300A	DELETED		TRANSFERRED TO ITEM 330A		
- 300B	DELETED		TRANSFERRED TO ITEM 330C		
- 310	DELETED		TRANSFERRED TO ITEM 330B		
- 320	DELETED		TRANSFERRED TO ITEM 330A		
330	3009170		.PLATE, IDENTIFICATION, ENGINE FOR ENGINES BUILT TO BS801 POST-SB1221 PRE-PT6A SPB NO.96 PRATT & WHITNEY CANADA (P&WC) (STANDARD) TWO-WAY INTRCHG WITH P/N 3026816 TWO-WAY INTRCHG WITH P/N 3057892-01	A B	1
- 330A	3009175		.PLATE, IDENTIFICATION, ENGINE POST-SB1221 PRE-PT6A SPB NO.96 P&WC (BEECH AIRCRAFT) TWO-WAY INTRCHG WITH P/N 3026818 TWO-WAY INTRCHG WITH P/N 3057892-01	A B C	1
- 330B	3026816		.PLATE, IDENTIFICATION, ENGINE FOR ENGINES BUILT TO BS801 PRATT & WHITNEY AIRCRAFT (P&WA) (STANDARD) POST-SB1221 SEE NOTE 4	A B	1
- 330C	3026818		.PLATE, IDENTIFICATION P&WA (BEECH AIRCRAFT) POST-SB1221 SEE NOTE 4	A B C	1
- 330D	3057892-01		.PLATE, IDENTIFICATION POST-PT6A SPB NO.96	A B C	1
			ATTACHING PARTS		
333	3103470-01		.PLATE, IDENTIFICATION (MODULE/ENGINE IDENTIFICATION BY BUILD SPEC.) POST-SB1509 RESTRICTED INTERCHANGEABILITY WITH P/N . REFER TO APPLICABLE SERVICE BULLETIN. SEE NOTE 3	A B C	1
335	3011178		.RIVET, BLIND SEE NOTE 3 POST-SB1509	A B C	2

CONTINUED

- ITEM NOT ILLUSTRATED

EFF MODEL A PT6A-27 B PT6A-28 C PT6A-21	EFF MODEL	EFF MODEL
--	-----------	-----------

72-20-00

Figure 2

Page 7

Aug 27/2004

PRATT & WHITNEY CANADA
ILLUSTRATED PARTS CATALOG
MANUAL PART NO. 3013244

FIG. ITEM	PART NUMBER	AIRLINE PART NUMBER	NOMENCLATURE	EFFECT CODE	UNITS PER ASSY
2			1234567		
337	3105046-01		.PLATE SUPPORT, IDENTIFICATION PLATE SEE NOTE 3 PRE-SB1540 TWO-WAY INTRCHG WITH P/N 3043836-01	A B C	1
- 337A	3043836-01		.PLATE SUPPORT, IDENTIFICATION PLATE POST-SB1540	A B C	1
- 340	3012377		.BOLT, MACHINE, HEX INTRCHG WITH P/N MS9518-04	A B C	4
340A	MS9518-04		.BOLT, MACHINE, HEX	A B C	4
350	MS35333-73		.WASHER, INTERNAL TOOTH SEE NOTE 1	A B C	2
- 360			-----*----- COMPRESSOR INLET CASE INSTALLATION SEE 72-00-00 FIG. 1 FOR NHA	A B C	REF
370	3003533		.NOZZLE, OIL, COMPRESSOR NO.1 BEARING	A B C	1
380	3011928		ATTACHING PARTS .BOLT, MACHINE, DRD HEX INTRCHG WITH P/N MS9529-04	A B C	2
- 380A	MS9529-04		.BOLT, MACHINE, HEX	A B C	2
- 390	3001638		-----*----- .PACKING, PREFORMED INTRCHG WITH P/N MS9388-012	A B C	1
390A	MS9388-012		.PACKING, PREFORMED INTRCHG WITH P/N AS3209-012	A B C	1
- 390B	AS3209-012		.PACKING, PREFORMED	A B C	1
400	MS9014-01		.RING, RETAINING, INTERNAL INTRCHG WITH P/N 3028387	A B C	1

CONTINUED

- ITEM NOT ILLUSTRATED

EFF MODEL A PT6A-27 B PT6A-28 C PT6A-21	EFF MODEL	EFF MODEL
--	-----------	-----------

72-20-00
Figure 2
Page 8
Aug 27/2004

PRATT & WHITNEY CANADA
ILLUSTRATED PARTS CATALOG
MANUAL PART NO. 3013244

FIG. ITEM	PART NUMBER	AIRLINE PART NUMBER	NOMENCLATURE	EFFECT CODE	UNITS PER ASSY
2			1234567		
- 400A	3028387		.RING, RETAINING	A B C	1
410	3003428		.FILTER, OIL JET, NO.1 BEARING	A B C	1
420	MS9245-23		.PIN, COTTER FOR ENGINES BUILT TO BS1141 PRE-SB1482R1	A B C	1
430	AN121670		.PIN, FLAT HEAD FOR ENGINES BUILT TO BS1141 PRE-SB1482R1	A B C	1
440	3004073		.PLUG, OIL TANK DRAIN FOR ENGINES BUILT TO BS1141 PRE-SB1482R1	A B C	1
- 445	PK265		.CAP, SHIPPING, ELECTRICAL CONNECTOR FOR ENGINES BUILT TO BS571, BS671, BS788 POST-SB1482R1	C	1
- 450	3001640		.PACKING, PREFORMED INTRCHG WITH P/N MS9388-016	A B C	1
450A	MS9388-016		.PACKING, PREFORMED INTRCHG WITH P/N AS3209-016	A B C	1
- 450B	AS3209-016		.PACKING, PREFORMED FOR ENGINES BUILT TO BS1141 PRE-SB1482R1	A B C	1
- 460	3010031		.CASE ASSEMBLY, COMPRESSOR INLET PRE-SB1113 NONINTR WITH P/N 3013045	A B	1
460A	3013045		.CASE ASSEMBLY, COMPRESSOR INLET POST-SB1113	A B C	1
470	3012675		ATTACHING PARTS .NUT OPTION (IC) SEE TABLE FOR OPTIONAL PART NUMBERS -----*-----	A B C	18
			NOTE 1: FOR SERVICE REPLACEMENT OF TRIM SPEED PLATE ONLY, EQUIVALENT PARTS MAY BE USED		
CONTINUED					

- ITEM NOT ILLUSTRATED

EFF MODEL A PT6A-27 B PT6A-28 C PT6A-21	EFF MODEL	EFF MODEL
--	-----------	-----------

72-20-00
Figure 2
Page 9
Aug 27/2004

PRATT & WHITNEY CANADA
ILLUSTRATED PARTS CATALOG
MANUAL PART NO. 3013244

FIG. ITEM	PART NUMBER	AIRLINE PART NUMBER	1234567 NOMENCLATURE	EFFECT CODE	UNITS PER ASSY
2			<p><u>NOTE</u> 2: NOT FITTED TO BAILEY CONVERSION</p> <p><u>NOTE</u> 3: P/N 3103470-01, 3011178 AND 3105046-01 MUST BE FITTED IN A SET</p> <p><u>NOTE</u> 4: DELETED DATA PLATE, UNIQUE FOR ENGINES BUILT BY P&WA (USA)</p>		

- ITEM NOT ILLUSTRATED

EFF MODEL	EFF MODEL	EFF MODEL
-----------	-----------	-----------

72-20-00
Figure 2
Page 10
Aug 27/2004

Case Assembly, Compressor Inlet

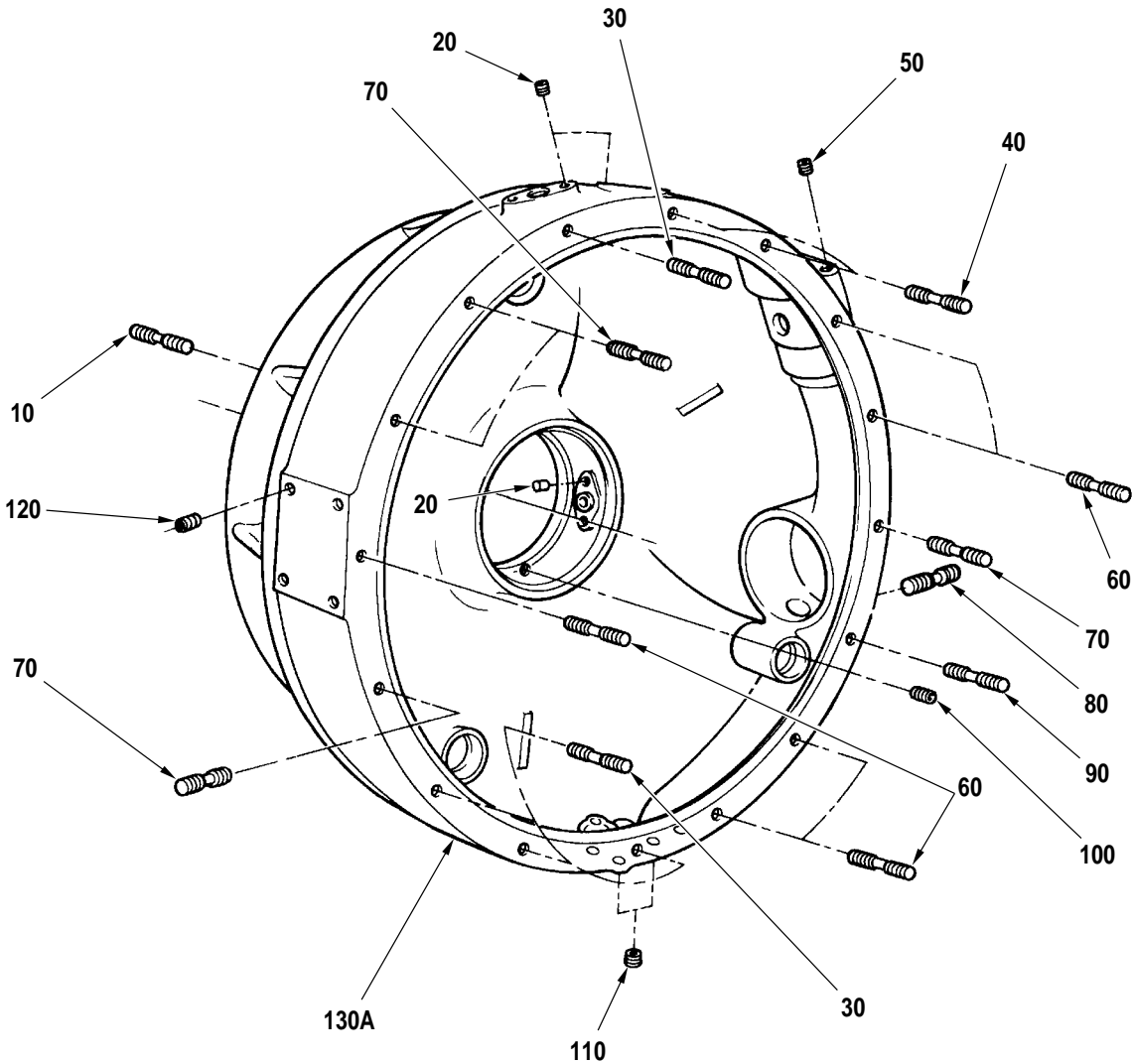
72-20-00

Figure 3

Page 1

Aug 27/2004

PRATT & WHITNEY CANADA
ILLUSTRATED PARTS CATALOG
MANUAL PART NO. 3013244



Case Assembly, Compressor Inlet
Figure 3

C52032

72-20-00

Figure 3

Page 2

Aug 27/2004

PRATT & WHITNEY CANADA
ILLUSTRATED PARTS CATALOG
MANUAL PART NO. 3013244

FIG. ITEM	PART NUMBER	AIRLINE PART NUMBER	1234567 NOMENCLATURE	EFFECT CODE	UNITS PER ASSY
3					
- 1	3010031		CASE ASSEMBLY, COMPRESSOR INLET SEE FIG. 2 FOR NHA NONINTR WITH P/N 3013045	A B	REF
- 1A	3013045		CASE ASSEMBLY, COMPRESSOR INLET SEE FIG. 2 FOR NHA	A B C	REF
10	AN152638		.STUD, STEPPED, DRD 0.190- 32 X 0.250-20 X 1.000 PRE-SB1501 TWO-WAY INTRCHG WITH P/N AN150538	A B C	18
- 10A	AN150538		.STUD, STEPPED POST-SB1501	A B C	18
	AN150539		..STUD, STEPPED		AR
	AN150540		..STUD, STEPPED		AR
- 10B	AN152639		.STUD, STEPPED 0.003 IN OVS	A B C	AR
- 10C	AN152640		.STUD, STEPPED 0.006 IN OVS	A B C	AR
20	MS124695		.INSERT, HELICAL COIL	A B C	6
30	AN150556		.STUD, STEPPED 0.190-32 X 0.250-20 X 1.250	A B C	4
- 30A	AN150557		.STUD, STEPPED 0.003 IN OVS	A B C	AR
- 30B	AN150558		.STUD, STEPPED 0.006 IN OVS	A B C	AR
40	AN150586		.STUD, STEPPED 0.190-32 X 0.250-20 X 1.562	A B C	2
- 40A	AN150587		.STUD, STEPPED 0.003 IN OVS	A B C	AR
- 40B	AN150588		.STUD, STEPPED 0.006 IN OVS	A B C	AR

CONTINUED

- ITEM NOT ILLUSTRATED

EFF MODEL A PT6A-27 B PT6A-28 C PT6A-21	EFF MODEL	EFF MODEL
--	-----------	-----------

72-20-00

Figure 3

Page 3

Aug 27/2004

PRATT & WHITNEY CANADA
ILLUSTRATED PARTS CATALOG
MANUAL PART NO. 3013244

FIG. ITEM	PART NUMBER	AIRLINE PART NUMBER	NOMENCLATURE	EFFECT CODE	UNITS PER ASSY
3			1234567		
50	MS124775		.INSERT, HELICAL COIL	A B C	2
60	AN150574		.STUD, STEPPED 0.190-32 X 0.250-20 X 1.438	A B C	5
- 60A	AN150575		.STUD, STEPPED 0.003 IN OVS	A B C	AR
- 60B	AN150576		.STUD, STEPPED 0.006 IN OVS	A B C	AR
70	AN150580		.STUD, STEPPED 0.190-32 X 0.250-20 X 1.500	A B C	4
- 70A	AN150581		.STUD, STEPPED 0.003 IN OVS	A B C	AR
- 70B	AN150582		.STUD, STEPPED 0.006 IN OVS	A B C	AR
80	AN150538		.STUD, STEPPED 0.190-32 X 0.250-20 X 1.062	A B C	4
- 80A	AN150539		.STUD, STEPPED 0.003 IN OVS	A B C	AR
- 80B	AN150540		.STUD, STEPPED 0.006 IN OVS	A B C	AR
90	AN150568		.STUD, STEPPED 0.190-32 X 0.250-20 X 1.375	A B C	1
- 90A	AN150569		.STUD, STEPPED 0.003 IN OVS	A B C	AR
- 90B	AN150570		.STUD, STEPPED 0.006 IN OVS	A B C	AR
100	MS124655		.INSERT, HELICAL COIL	A B C	4
110	MS124735		.INSERT, HELICAL COIL	A B C	4

CONTINUED

- ITEM NOT ILLUSTRATED

EFF MODEL	EFF MODEL	EFF MODEL
A PT6A-27		
B PT6A-28		
C PT6A-21		

72-20-00

Figure 3

Page 4

Aug 27/2004

PRATT & WHITNEY CANADA
ILLUSTRATED PARTS CATALOG
MANUAL PART NO. 3013244

FIG. ITEM	PART NUMBER	AIRLINE PART NUMBER	1234567 NOMENCLATURE	EFFECT CODE	UNITS PER ASSY
3					
120	3007311		.INSERT, HELICAL COIL	A B C	4
- 130	3010030		.CASE, COMPRESSOR INLET COMPONENT OF P/N 3010031	A B	NP
130A	3013044		.CASE, COMPRESSOR INLET COMPONENT OF P/N 3013045	A B C	NP

- ITEM NOT ILLUSTRATED

EFF MODEL A PT6A-27 B PT6A-28 C PT6A-21	EFF MODEL	EFF MODEL
--	-----------	-----------

72-20-00
Figure 3
Page 5/6
Aug 27/2004

