

**PRATT & WHITNEY CANADA**  
**ILLUSTRATED PARTS CATALOG**  
**MANUAL PART NO. 3013244**

LIST OF EFFECTIVE PAGES

<u>CHAPTER SECTION</u>	<u>PAGE</u>	<u>DATE</u>	<u>CHAPTER SECTION</u>	<u>PAGE</u>	<u>DATE</u>
LEP	1	Aug 27/2004	72-11-00 Figure 4	1	Aug 27/2004
	2 blank	Aug 27/2004		2	Aug 27/2004
				3	Aug 27/2004
Contents	1	Aug 27/2004		4	Aug 27/2004
	2 blank	Aug 27/2004		5	Aug 27/2004
72-11-00 Figure 1	1	Aug 27/2004		6	Aug 27/2004
	2	Aug 27/2004		7	Aug 27/2004
	3	Aug 27/2004		8	Aug 27/2004
	4	Aug 27/2004		9	Aug 27/2004
	5	Aug 27/2004		10	Aug 27/2004
	6	Aug 27/2004		11	Aug 27/2004
72-11-00 Figure 2				12	Aug 27/2004
	1	Aug 27/2004		13	Aug 27/2004
	2	Aug 27/2004		14	Aug 27/2004
	3	Aug 27/2004	72-11-00 Figure 5	1	Aug 27/2004
	4	Aug 27/2004		2	Aug 27/2004
	5	Aug 27/2004		3	Aug 27/2004
	6	Aug 27/2004		4	Aug 27/2004
	7	Aug 27/2004		5	Aug 27/2004
8	Aug 27/2004	6 blank		Aug 27/2004	
72-11-00 Figure 3	1	Aug 27/2004	72-11-00 Figure 6	1	Aug 27/2004
	2	Aug 27/2004		2	Aug 27/2004
	3	Aug 27/2004		3	Aug 27/2004
	4	Aug 27/2004		4	Aug 27/2004
	5	Aug 27/2004	72-11-00 Figure 7	1	Aug 27/2004
	6	Aug 27/2004		2	Aug 27/2004
	7	Aug 27/2004		3	Aug 27/2004
	8	Aug 27/2004		4	Aug 27/2004
	9	Aug 27/2004			
	10	Aug 27/2004			
	11	Aug 27/2004			
	12	Aug 27/2004			
	13	Aug 27/2004			
	14	Aug 27/2004			
	15	Aug 27/2004			
	16	Aug 27/2004			
	17	Aug 27/2004			
	18	Aug 27/2004			



**PRATT & WHITNEY CANADA**  
**ILLUSTRATED PARTS CATALOG**  
**MANUAL PART NO. 3013244**

TABLE OF CONTENTS

<u>TITLE</u>	<u>CH/SE/SU</u>	<u>FIGURE</u>
Chip Detector Installation (PT6A-21)	72-11-00	7
Gearbox Assembly, Propeller - External Components (PT6A-21)	72-11-00	1
Gearbox Assembly, Propeller Reduction - Carrier Balancing Assembly (PT6A-21)	72-11-00	4
Gearbox Assembly, Propeller Reduction - Carrier Set and Prop Shaft (PT6A-21)	72-11-00	3
Gearbox Assembly, Propeller Reduction, Cover Bearing And Internal Components - PT6A-21	72-11-00	2
Housing Assembly, Propeller Reduction Gearbox, Front (PT6A-21)	72-11-00	5
Housing Assembly, Reduction Gearbox, Rear (PT6A-21)	72-11-00	6



# Gearbox Assembly, Propeller - External Components (PT6A-21)

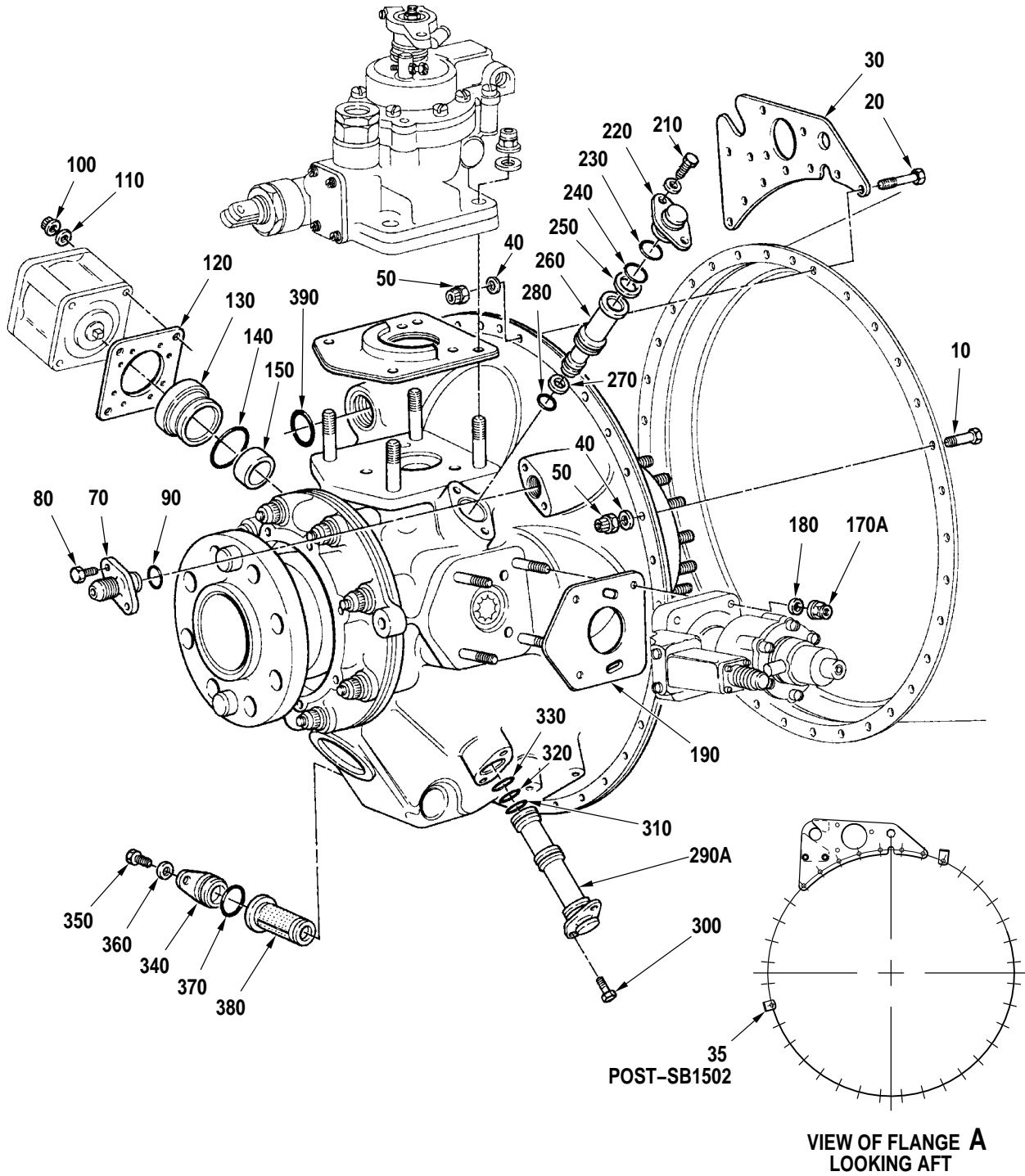
**72-11-00**

**Figure 1**

Page 1

Aug 27/2004

PRATT & WHITNEY CANADA  
 ILLUSTRATED PARTS CATALOG  
 MANUAL PART NO. 3013244



C52084B

Gearbox Assembly, Propeller - External Components  
 (PT6A-21)  
 Figure 1

**72-11-00**

**Figure 1**

Page 2

Aug 27/2004

**PRATT & WHITNEY CANADA**  
**ILLUSTRATED PARTS CATALOG**  
**MANUAL PART NO. 3013244**

FIG. ITEM	PART NUMBER	AIRLINE PART NUMBER	NOMENCLATURE	EFFECT CODE	UNITS PER ASSY
1			1234567		
- 1	3027480		GEARBOX ASSEMBLY, PROPELLER BREAKDOWN CONTINUED ON FIG. 2 THRU FIG. 4 SEE 72-00-00 FIG. 1 FOR NHA ATTACHING PARTS	C	REF
10	MS9518-13		.BOLT, MACHINE, HEX	C	29
20	MS9518-14		.BOLT, MACHINE, HEX	C	7
30	3022333		.BRACKET, ENGINE LIFTING AND ACCESSORY MOUNTING	C	1
35	3119970-01		.BRACKET, 90-DEG, ANGLE FOR ENGINES BUILT TO BS571, BS671, BS788, BS1141	C	1
- 35A	MS9593-125		.BRACKET, 90-DEG, ANGLE FOR ENGINES BUILT TO BS571, BS671, BS788, BS1141 POST-SB1502	C	1
40	3003988		.WASHER, PLAIN	C	36
50	3012675		.NUT OPTION (IC) SEE TABLE FOR OPTIONAL PART NUMBERS -----*-----	C	36
60	DELETED				
70	3007101		.CONNECTOR, TORQUEMETER TRANSMITTER ATTACHING PARTS	C	1
80	MS9529-08		.BOLT, MACHINE, DRD HEX -----*-----	C	2
90	MS9388-011		.PACKING, PREFORMED INTRCHG WITH P/N AS3209-011	C	1
- 90A	AS3209-011		.PACKING, PREFORMED	C	1
100	3012680		.NUT OPTION (IC) SEE TABLE FOR OPTIONAL PART NUMBERS	C	4
110	MS9320-10		.WASHER, FLAT	C	4
120	MS9134-01		.GASKET, ACCESSORY MOUNTING SEE AIRFRAME MANUAL FOR ACCESSORY PRE-SB1481 TWO-WAY INTRCHG WITH P/N ST3276-01	C	1

CONTINUED

- ITEM NOT ILLUSTRATED

EFF MODEL C PT6A-21	EFF MODEL	EFF MODEL
------------------------	-----------	-----------

**72-11-00**  
**Figure 1**  
Page 3  
Aug 27/2004

**PRATT & WHITNEY CANADA**  
**ILLUSTRATED PARTS CATALOG**  
**MANUAL PART NO. 3013244**

FIG. ITEM	PART NUMBER	AIRLINE PART NUMBER	NOMENCLATURE	EFFECT CODE	UNITS PER ASSY
			1234567		
1					
- 120A	ST3276-01		.GASKET, ACCESSORY MOUNTING SEE AIRFRAME MANUAL FOR ACCESSORY POST-SB1481	C	1
130	3003957		.CARRIER, OIL SEAL	C	1
140	MS9388-026		.PACKING, PREFORMED INTRCHG WITH P/N AS3209-026	C	1
- 140A	AS3209-026		.PACKING, PREFORMED	C	1
150	3016576		.SEAL OPTION (IC) INTRCHG WITH P/N 3022374 (IC) CONSISTS OF:	C	1
	3015523		..SEAL, PLAIN		AR
	3015534		..SEAL, PLAIN		AR
- 150A	3022374		.SEAL, PLAIN POST-SB1255	C	1
160	DELETED				
- 170	3012155		.NUT, SELF-LOCKING, DBL HEX INTRCHG WITH P/N 3021772 INTRCHG WITH P/N ST3066-11	C	4
170A	3021772		.NUT OPTION (IC) SEE TABLE FOR OPTIONAL PART NUMBERS	C	4
- 170B	ST3066-11		.NUT OPTION (IC) SEE TABLE FOR OPTIONAL PART NUMBERS	C	4
180	MS9320-11		.WASHER, FLAT	C	4
190	3010818		.GASKET, OVERSPEED GOVERNOR MOUNTING PRE-SB1487 TWO-WAY INTRCHG WITH P/N 3118953-01 SEE AIRFRAME MANUAL FOR ACCESSORY	C	1
190A	3118953-01		.GASKET, OVERSPEED GOVERNOR MOUNTING POST-SB1487 SEE AIRFRAME MANUAL FOR ACCESSORY	C	1
200	3009911		.COVER, PACKING INTRCHG WITH P/N 3108979-01	C	1
- 200A	3108979-01		.COVER, PACKING ATTACHING PARTS	C	1
210	MS9529-08		.BOLT, MACHINE, DRD HEX	C	2

CONTINUED

- ITEM NOT ILLUSTRATED

EFF MODEL C PT6A-21	EFF MODEL	EFF MODEL
------------------------	-----------	-----------

**72-11-00**

**Figure 1**

Page 4

Aug 27/2004



**PRATT & WHITNEY CANADA**  
**ILLUSTRATED PARTS CATALOG**  
**MANUAL PART NO. 3013244**

FIG. ITEM	PART NUMBER	AIRLINE PART NUMBER	1234567 NOMENCLATURE	EFFECT CODE	UNITS PER ASSY
1					
220	MS9320-09		.WASHER, FLAT -----*-----	C	2
230	MS9388-017		.PACKING, PREFORMED INTRCHG WITH P/N AS3209-017	C	1
- 230A	AS3209-017		.PACKING, PREFORMED	C	1
240	MS9388-016		.PACKING, PREFORMED INTRCHG WITH P/N AS3209-016	C	1
- 240A	AS3209-016		.PACKING, PREFORMED	C	1
250	3009913		.RETAINER, PACKING	C	1
260	3026886		.TUBE, TRANSFER, OIL PRE-SB1393 NONINTR WITH P/N 3028820	C	1
- 260A	3028820		.TUBE, TRANSFER PACKING POST-SB1393	C	1
270	3009919		.RETAINER, PACKING	C	1
280	MS9388-014		.PACKING, PREFORMED INTRCHG WITH P/N AS3209-014	C	1
- 280A	AS3209-014		.PACKING, PREFORMED	C	1
- 290	3016924		.TUBE, TRANSFER, PROPELLER NONINTR WITH P/N 3028279	C	1
290A	3028279		.TUBE, TRANSFER, PROPELLER OIL POST-SB1236 PRE-SB1393 NONINTR WITH P/N 3028822	C	1
- 290B	3028822		.TUBE, TRANSFER, PROPELLER OIL POST-SB1393	C	1
			ATTACHING PARTS		
300	MS9529-08		.BOLT, MACHINE, DRD HEX -----*-----	C	2
310	MS9388-017		.PACKING, PREFORMED INTRCHG WITH P/N AS3209-017	C	1
- 310A	AS3209-017		.PACKING, PREFORMED	C	1
320	MS9388-016		.PACKING, PREFORMED INTRCHG WITH P/N AS3209-016	C	1
- 320A	AS3209-016		.PACKING, PREFORMED	C	1
330	MS9388-015		.PACKING, PREFORMED INTRCHG WITH P/N AS3209-015	C	1
- 330A	AS3209-015		.PACKING, PREFORMED	C	1
340	3007219		.PLUG, SCAVENGE OIL STRAINER	C	1

CONTINUED

- ITEM NOT ILLUSTRATED

EFF MODEL C PT6A-21	EFF MODEL	EFF MODEL
------------------------	-----------	-----------

**72-11-00**  
**Figure 1**  
Page 5  
Aug 27/2004

**PRATT & WHITNEY CANADA**  
**ILLUSTRATED PARTS CATALOG**  
**MANUAL PART NO. 3013244**

FIG. ITEM	PART NUMBER	AIRLINE PART NUMBER	1234567 NOMENCLATURE	EFFECT CODE	UNITS PER ASSY
1			ATTACHING PARTS		
350	MS9529-08		.BOLT, MACHINE, DRD HEX	C	1
360	MS9320-09		.WASHER, FLAT	C	1
			-----*-----		
370	MS9388-019		.PACKING, PREFORMED INTRCHG WITH P/N AS3209-019	C	1
- 370A	AS3209-019		.PACKING, PREFORMED	C	1
380	3026759		.STRAINER SLEEVE OPTION (IC) INTRCHG WITH P/N 3026654 (IC) CONSISTS OF:	C	1
	3010629		..STRAINER SLEEVE, SCAVENGE OIL		AR
	3026654		..STRAINER SLEEVE, SCAVENGE OIL		AR
	3035101		..STRAINER SLEEVE, SCAVENGE OIL		AR
- 380A	3026654		.STRAINER SLEEVE, SCAVENGE OIL	C	1
390	MS9388-213		.PACKING, PREFORMED, TRANSMITTER BOSS INTRCHG WITH P/N AS3209-213	C	1
- 390A	AS3209-213		.PACKING, PREFORMED	C	1

- ITEM NOT ILLUSTRATED

EFF MODEL C PT6A-21	EFF MODEL	EFF MODEL
------------------------	-----------	-----------

**72-11-00**

**Figure 1**

Page 6

Aug 27/2004

Gearbox Assembly, Propeller  
Reduction, Cover Bearing And  
Internal Components - PT6A-21

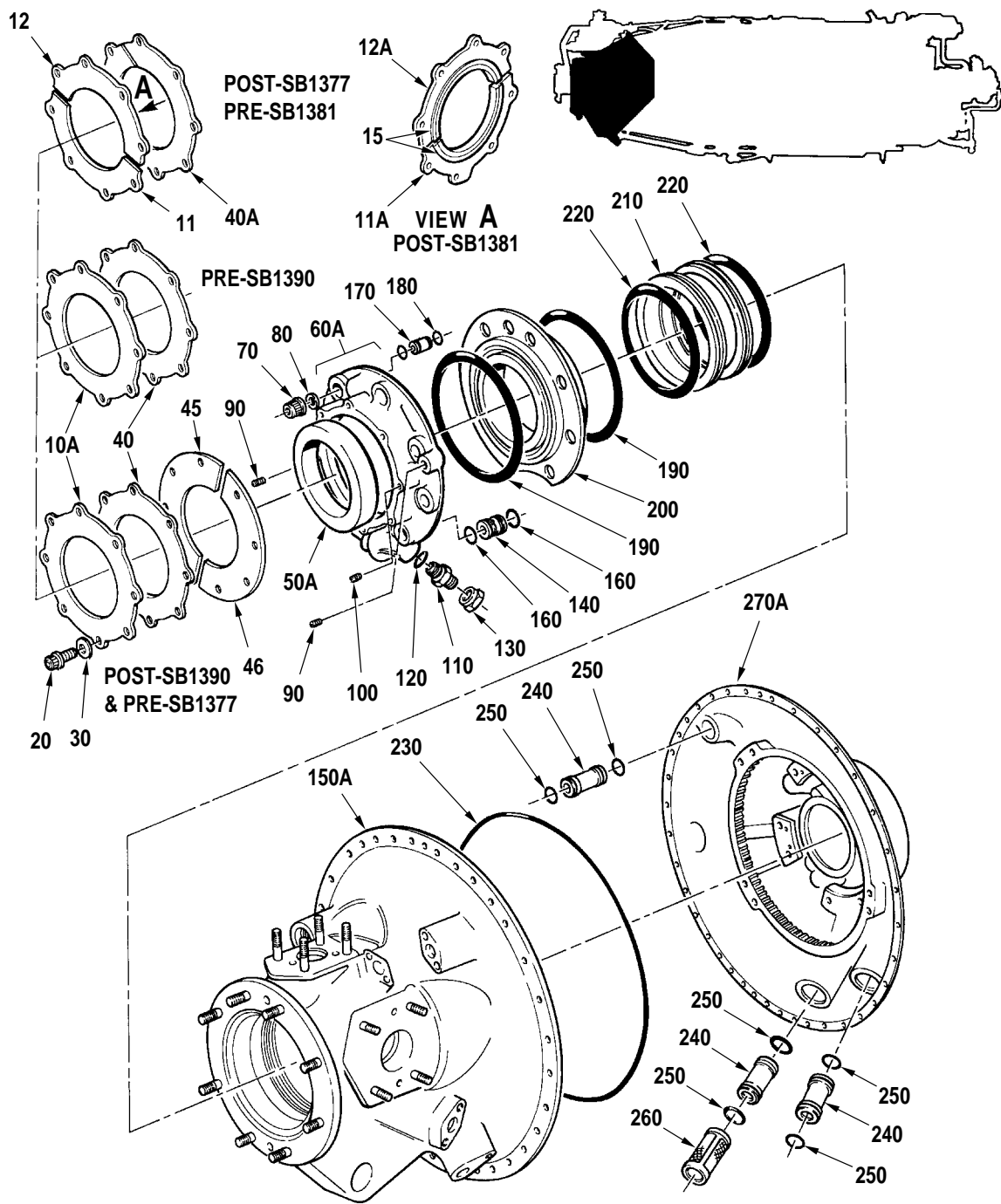
**72-11-00**

**Figure 2**

Page 1

Aug 27/2004

**PRATT & WHITNEY CANADA**  
**ILLUSTRATED PARTS CATALOG**  
**MANUAL PART NO. 3013244**



C52085E

Gearbox Assembly, Propeller Reduction, Cover Bearing  
 And Internal Components - PT6A-21  
 Figure 2

**72-11-00**

**Figure 2**

Page 2

Aug 27/2004

**PRATT & WHITNEY CANADA**  
**ILLUSTRATED PARTS CATALOG**  
**MANUAL PART NO. 3013244**

FIG. ITEM	PART NUMBER	AIRLINE PART NUMBER	1234567 NOMENCLATURE	EFFECT CODE	UNITS PER ASSY
2					
- 1			GEARBOX ASSEMBLY, PROPELLER REDUCTION BREAKDOWN CONT'D FROM FIG. 1 INTRCHG WITH P/N 3100749-04	C	REF
- 10	3017052		.RING, HALF, PROPELLER SHAFT OIL SEAL NONINTR WITH P/N 3024669	C	2
10A	3024669		.RING-PROPELLER SHAFT OIL SEAL RETAINING POST-SB1227 PRE-SB1377 NONINTR WITH P/N 3104391-01 NONINTR WITH P/N 3104392-01	C	1
11	3104391-01		.RING HALF, LOWER, PROPELLER SHAFT, OIL SEAL RETAINING POST-SB1377 PRE-SB1381 NONINTR WITH P/N 3114353-01	C	1
11A	3114353-01		.RING HALF ASSEMBLY, LOWER, PROPELLER SHAFT, OIL SEAL RETAINING POST-SB1381 SEE NOTE 1	C	1
12	3104392-01		.RING HALF, UPPER PROPELLER SHAFT, OIL SEAL RETAINING POST-SB1377 PRE-SB1381 INTRCHG WITH P/N 3114352-01	C	1
12A	3114352-01		.RING HALF ASSEMBLY, UPPER, PROPELLER SHAFT, OIL SEAL RETAINING POST-SB1381 SEE NOTE 1	C	1
- 13	3114355-01		..RING HALF, LOWER OIL SEAL RETAINING COMPONENT OF P/N 3114353-01	C	NP
- 14	3114354-01		..RING HALF, UPPER, PROPELLER SHAFT, OIL SEAL RETAINING COMPONENT OF P/N 3114352-01	C	NP
15	3114351-01		..STRIP, FELT COMPONENT OF P/N 3114352-01 AND 3114353-01 SEE NOTE 1	C	AR
20	MS9565-08		ATTACHING PARTS .BOLT, MACHINE, DRD, DBL HEX	C	8

CONTINUED

- ITEM NOT ILLUSTRATED

EFF MODEL C PT6A-21	EFF MODEL	EFF MODEL
------------------------	-----------	-----------

**72-11-00**  
**Figure 2**  
Page 3  
Aug 27/2004

**PRATT & WHITNEY CANADA**  
**ILLUSTRATED PARTS CATALOG**  
**MANUAL PART NO. 3013244**

FIG. ITEM	PART NUMBER	AIRLINE PART NUMBER	NOMENCLATURE	EFFECT CODE	UNITS PER ASSY
			1234567		
2					
30	3001564		.WASHER, FLAT -----*-----	C	8
40	3024672		.GASKET, PROPELLER SHAFT OIL SEAL RETAINING RING POST-SB1227 PRE-SB1377 PRE-SB1490 NONINTR WITH P/N 3104393-01 TWO-WAY INTRCHG WITH P/N 3039954	C	1
40A	3104393-01		.GASKET-SPLIT, PROPELLER SHAFT OIL SEAL RETAINING RING POST-SB1377 PRE-SB1490 TWO-WAY INTRCHG WITH P/N 3116679-01	C	1
- 40B	3039954		.GASKET, PROPELLER SHAFT, OIL SEAL RETAINING RING POST-SB1490	C	1
- 40C	3116679-01		.GASKET, SPLIT, PROPELLER SHAFT OIL SEAL RETAINING RING POST-SB1490	C	1
45	3106454-01		.SUPPORT RING HALF, PROP SHAFT OIL SEAL POST-SB1390 PRE-SB1377 SEE NOTE 2 AND 4	C	1
46	3106454-02		.SUPPORT RING HALF, PROP SHAFT OIL SEAL POST-SB1390 PRE-SB1377 SEE NOTE 2 AND 4	C	1
- 50	3013899		.SEAL, PLAIN PRE-SB1255 PRE-SB1465 INTRCHG WITH P/N 3026652 INTRCHG WITH P/N 3114661-01	C	1
50A	3026652		.SEAL, PLAIN POST-SB1255 PRE-SB1465 INTRCHG WITH P/N 3038308 INTRCHG WITH P/N 3114661-01	C	1
- 50B	3114661-01		.SEAL, PLAIN PRE-SB1465 POST-SB1465 INTRCHG WITH P/N 3026652 SEE NOTE 2	C	1

CONTINUED

- ITEM NOT ILLUSTRATED

EFF MODEL C PT6A-21	EFF MODEL	EFF MODEL
------------------------	-----------	-----------

**72-11-00**  
**Figure 2**  
Page 4  
Aug 27/2004

**PRATT & WHITNEY CANADA**  
**ILLUSTRATED PARTS CATALOG**  
**MANUAL PART NO. 3013244**

FIG. ITEM	PART NUMBER	AIRLINE PART NUMBER	NOMENCLATURE	EFFECT CODE	UNITS PER ASSY
			1234567		
2					
- 50C	3026652		.SEAL, PLAIN POST-SB1465	C	1
- 51	3038308		.SEAL, PLAIN USE WITH P/N 3113779-01 PRE-SB1465 INTRCHG WITH P/N 3114661-01 SEE NOTE 2 AND 3	C	1
- 52	3113779-01		.SEAL, SPACER, PROPELLER SHAFT USE WITH P/N 3038308 PRE-SB1465 SEE NOTE 2 AND 3	C	2
- 60	3010180		.COVER ASSEMBLY, THRUST BEARING NONINTR WITH P/N 3024673	C	1
60A	3024673		.COVER ASSEMBLY, THRUST BEARING POST-SB1227	C	1
			ATTACHING PARTS		
70	3012157		.NUT, SELF-LOCKING, DBL HEX INTRCHG WITH P/N ST3066-12	C	8
- 70A	ST3066-12		.NUT OPTION (IC) SEE TABLE FOR OPTIONAL PART NUMBERS	C	8
80	MS9320-12		.WASHER, FLAT (QTY 6 REQD WHEN USING BRACKET P/N 3011543, 76-10-00 FIG. 2)  -----*-----	C	8
90	MS124736		..INSERT, HELICAL COIL	C	2
100	MS124735		..INSERT, HELICAL COIL	C	8
110	MS9193-03		.NIPPLE, TUBE FOR ENGINES BUILT TO BS1141 POST-SB1227 PRE-SB1618 ONE-WAY INTRCHG WITH P/N MS9769-031	C	1
- 110A	MS9769-031		.REDUCER, TUBE FOR ENGINES BUILT TO BS788, BS789 POST-SB1618	C	1
120	MS9387-03		.PACKING, PREFORMED POST-SB1227 INTRCHG WITH P/N AS3208-03	C	1
- 120A	AS3208-03		.PACKING, PREFORMED FOR ENGINES BUILT TO BS788, BS789, BS1141 POST-SB1227	C	1

CONTINUED

- ITEM NOT ILLUSTRATED

EFF MODEL C PT6A-21	EFF MODEL	EFF MODEL
------------------------	-----------	-----------

**72-11-00**  
**Figure 2**  
Page 5  
Aug 27/2004

**PRATT & WHITNEY CANADA**  
**ILLUSTRATED PARTS CATALOG**  
**MANUAL PART NO. 3013244**

FIG. ITEM	PART NUMBER	AIRLINE PART NUMBER	NOMENCLATURE	EFFECT CODE	UNITS PER ASSY
2			1234567		
130	MS9314-03		.CAP ASSEMBLY, TUBE FOR ENGINES BUILT TO BS1141 POST-SB1227 PRE-SB1618 ONE-WAY INTRCHG WITH P/N MS9314-03 SEE 72-00-00 FIG. 2	C	1
- 130A	DELETED		FOR ENGINES BUILT TO BS788, BS789 SEE 72-00-00 FIG. 2 POST-SB1618	C	
140	3007097		.TUBE, TRANSFER	C	1
- 150	3022947		.HOUSING ASSEMBLY, PROPELLER REDUCTION GEARBOX, FRONT SEE FIG. 5 FOR BREAKDOWN NONINTR WITH P/N 3028266	C	1
150A	3028266		.HOUSING ASSEMBLY PROPELLER REDUCTION GEARBOX, FRONT SEE FIG. 5 FOR BREAKDOWN POST-SB1236 PRE-SB1502 RESTRICTED INTERCHANGEABILITY WITH P/N 3119973-01. REFER TO APPLICABLE SERVICE BULLETIN.	C	1
- 150B	3119973-01		.HOUSING ASSEMBLY PROPELLER REDUCTION GEARBOX, FRONT FOR ENGINES BUILT TO BS571, BS671, BS788, BS1141 SEE FIG. 5 FOR BREAKDOWN SEE NOTE 5 POST-SB1502	C	1
160	MS9388-017		.PACKING, PREFORMED INTRCHG WITH P/N AS3209-017	C	2
- 160A	AS3209-017		.PACKING, PREFORMED	C	2
170	3004183		.TUBE, TRANSFER	C	1
180	MS9388-009		.PACKING, PREFORMED INTRCHG WITH P/N AS3209-009	C	2
- 180A	AS3209-009		.PACKING, PREFORMED PRE-PT6A SPB NO.53 TWO-WAY INTRCHG WITH P/N ST3367-009	C	2
- 180B	ST3367-009		.PACKING, PREFORMED 0.208 X 0.070 POST-PT6A SPB NO.53	C	2

CONTINUED

- ITEM NOT ILLUSTRATED

EFF MODEL C PT6A-21	EFF MODEL	EFF MODEL
------------------------	-----------	-----------

**72-11-00**

**Figure 2**

Page 6

Aug 27/2004



**PRATT & WHITNEY CANADA**  
**ILLUSTRATED PARTS CATALOG**  
**MANUAL PART NO. 3013244**

FIG. ITEM	PART NUMBER	AIRLINE PART NUMBER	1234567 NOMENCLATURE	EFFECT CODE	UNITS PER ASSY
2					
190	MS9388-159		.PACKING, PREFORMED INTRCHG WITH P/N AS3209-159	C	2
- 190A	AS3209-159		.PACKING, PREFORMED	C	2
200	3007147		.BEARING, BALL, FLANGED INTRCHG WITH P/N 3032620	C	1
- 200A	3032620		.BEARING OPTION (IC) INTRCHG WITH P/N 3032624 (IC) CONSISTS OF:	C	1
	3007147		..BEARING, BALL, FLANGED		AR
	3028008		..BEARING, BALL, FLANGED		AR
- 200B	3032624		.BEARING OPTION (IC) INTRCHG WITH P/N 3036488 (IC) CONSISTS OF:	C	1
	3101795-01		..BEARING, BALL, FLANGED		AR
	3102227-01		..BEARING, BALL, FLANGED		AR
- 200C	3036488		.BEARING OPTION (IC) (IC) CONSISTS OF:	C	1
	3102227-01		..BEARING, BALL, FLANGED		AR
	3109584-01		..BEARING, BALL, FLANGED		AR
210	3004029		.GALLERY, MAIN OIL TRANSFER INTRCHG WITH P/N 3109809-01	C	1
- 210A	3109809-01		.GALLERY, MAIN OIL TRANSFER	C	1
220	MS9388-158		.PACKING, PREFORMED INTRCHG WITH P/N AS3209-158	C	2
- 220A	AS3209-158		.PACKING, PREFORMED	C	2
230	MS9388-277		.PACKING, PREFORMED INTRCHG WITH P/N AS3209-277	C	1
- 230A	AS3209-277		.PACKING, PREFORMED	C	1
240	3003974		.TUBE, TRANSFER	C	3
250	MS9388-017		.PACKING, PREFORMED INTRCHG WITH P/N AS3209-017	C	6
- 250A	AS3209-017		.PACKING, PREFORMED	C	6
260	3026758		.STRAINER SLEEVE OPTION (IC) (IC) CONSISTS OF:	C	1
	3023024		..STRAINER SLEEVE, SCAVENGE OIL		AR
	3026653		..STRAINER SLEEVE, SCAVENGE OIL PRE-PT6A SPB NO.106		AR
	ST3674-01		..STRAINER SLEEVE, SCAVENGE OIL POST-PT6A SPB NO.106		AR
	3034720		..STRAINER SLEEVE, SCAVENGE OIL		AR

CONTINUED

- ITEM NOT ILLUSTRATED

EFF MODEL C PT6A-21	EFF MODEL	EFF MODEL
------------------------	-----------	-----------

**72-11-00**

**Figure 2**

Page 7

Aug 27/2004

**PRATT & WHITNEY CANADA**  
**ILLUSTRATED PARTS CATALOG**  
**MANUAL PART NO. 3013244**

FIG. ITEM	PART NUMBER	AIRLINE PART NUMBER	NOMENCLATURE	EFFECT CODE	UNITS PER ASSY
			1234567		
2					
- 270	3011298		.HOUSING ASSEMBLY, REDUCTION GEARBOX, REAR SEE FIG. 6 FOR BREAKDOWN NONINTR WITH P/N 3028282	C	1
270A	3028282		.HOUSING ASSEMBLY, REDUCTION GEARBOX, REAR SEE FIG. 6 FOR BREAKDOWN POST-SB1236 INTRCHG WITH P/N 3100749-02	C	1
- 270B	3100749-02		.HOUSING ASSEMBLY, REDUCTION GEARBOX, REAR SEE FIG. 6 FOR BREAKDOWN INTRCHG WITH P/N 3100749-04	C	1
- 270C	3100749-04		.HOUSING ASSEMBLY, REDUCTION GEARBOX, REAR SEE FIG. 6 FOR BREAKDOWN PRE-SB1553 TWO-WAY INTRCHG WITH P/N 3044254-01	C	1
- 270D	3044254-01		.HOUSING ASSEMBLY, PROPELLER REDUCTION GEARBOX, REAR SEE FIG. 6 FOR BREAKDOWN POST-SB1553  <u>NOTE 1:</u> PARTS MUST BE FITTED AS SETS <u>NOTE 2:</u> PARTS USED FOR FIELD REPAIR ONLY <u>NOTE 3:</u> PARTS MUST BE FITTED AS A SET <u>NOTE 4:</u> POST-SB1390 PARTS NOT REQUIRED FOR POST-SB1377 CONFIGURATION <u>NOTE 5:</u> WHEN REPLACEMENT SET IS MORE THAN ONE P/N OLD AND NEW PARTS ARE ONLY INTERCHANGEABLE IN COMPLETE SETS	C	1

- ITEM NOT ILLUSTRATED

EFF MODEL C PT6A-21	EFF MODEL	EFF MODEL
------------------------	-----------	-----------

**72-11-00**  
**Figure 2**  
Page 8  
Aug 27/2004

Gearbox Assembly, Propeller  
Reduction - Carrier Set and Prop  
Shaft (PT6A-21)

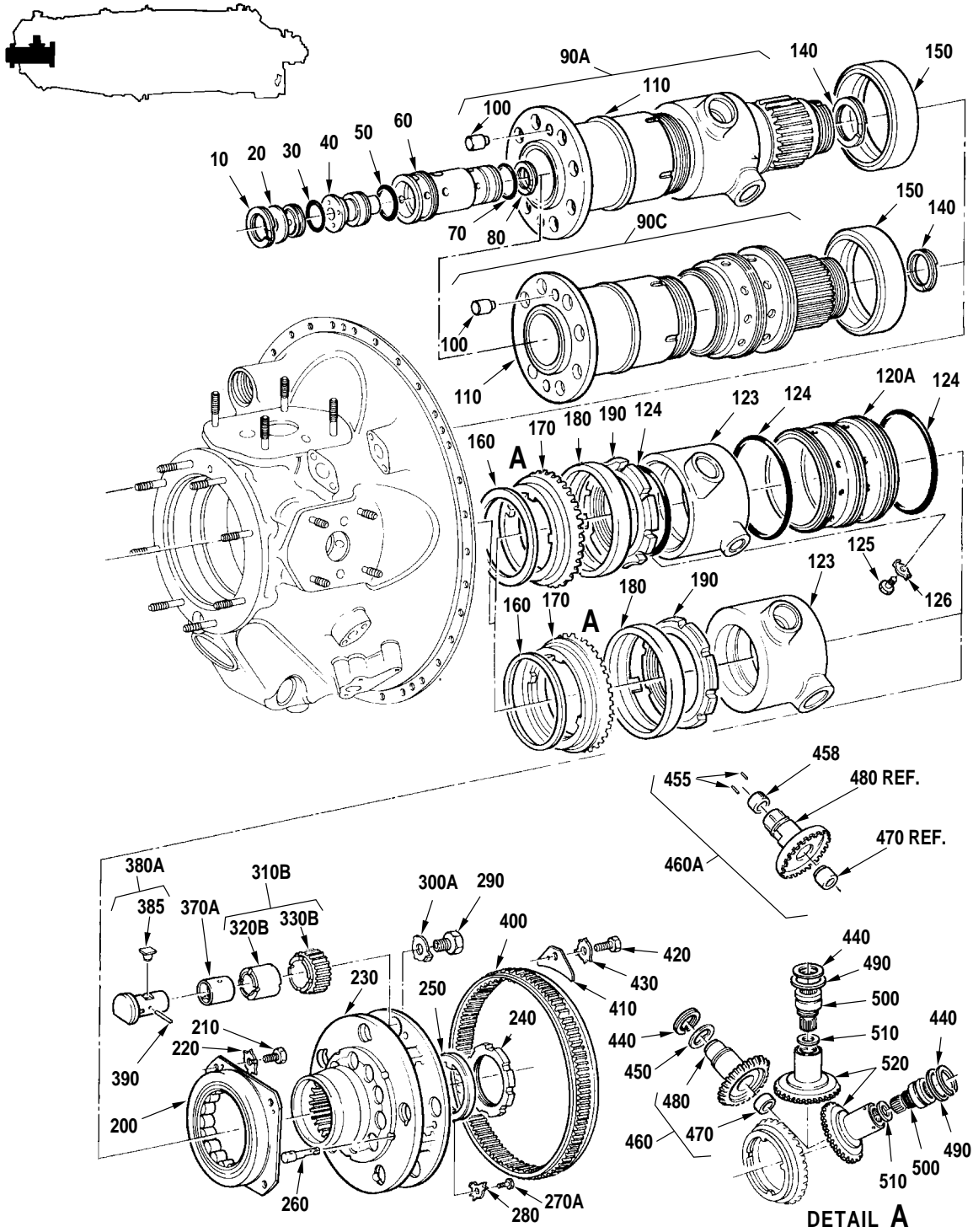
**72-11-00**

**Figure 3**

Page 1

Aug 27/2004

PRATT & WHITNEY CANADA  
 ILLUSTRATED PARTS CATALOG  
 MANUAL PART NO. 3013244



C52086D

Gearbox Assembly, Propeller Reduction - Carrier Set and Prop Shaft (PT6A-21)  
 Figure 3 (Sheet 1 of 2)

**72-11-00**

**Figure 3**

Page 2

Aug 27/2004

**PRATT & WHITNEY CANADA**  
**ILLUSTRATED PARTS CATALOG**  
**MANUAL PART NO. 3013244**

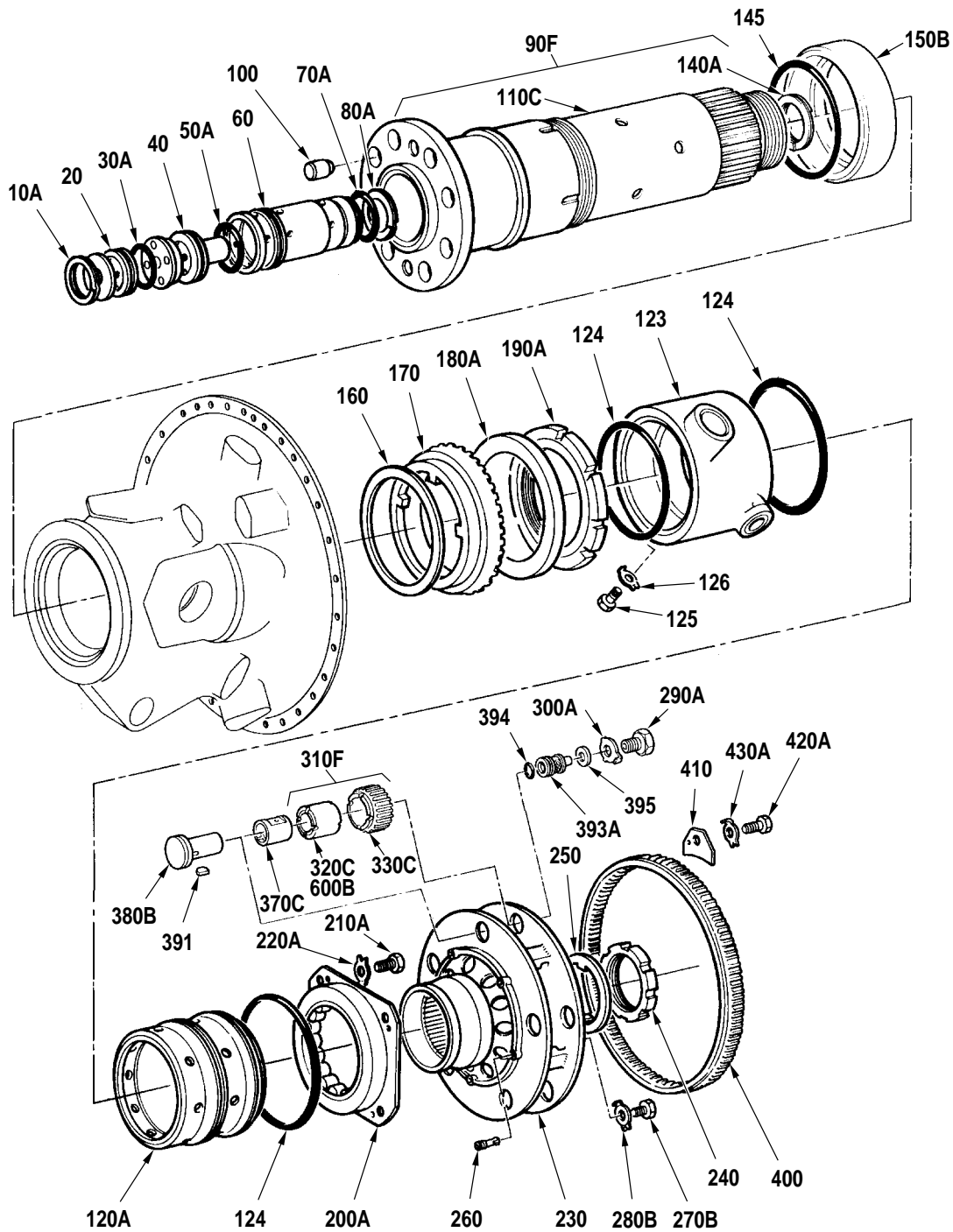
FIG. ITEM	PART NUMBER	AIRLINE PART NUMBER	NOMENCLATURE	EFFECT CODE	UNITS PER ASSY
			1234567		
3					
- 1			GEARBOX ASSEMBLY, PROPELLER REDUCTION BREAKDOWN CONT'D FROM FIG. 2	C	REF
10	3002340		.RING, RETAINING INTRCHG WITH P/N AS3217-146	C	1
- 10A	AS3217-146		.RING, RETAINING	C	1
20	3013146		.ADAPTER, PROPELLER SHAFT OIL TRANSFER TUBE	C	1
30	MS9388-130		.PACKING, PREFORMED INTRCHG WITH P/N AS3209-130	C	1
30A	AS3209-130		.PACKING, PREFORMED	C	1
40	3013148		.NOZZLE, OIL, NO.4 BEARING	C	1
50	MS9388-033		.PACKING, PREFORMED INTRCHG WITH P/N AS3209-033	C	1
50A	AS3209-033		.PACKING, PREFORMED	C	1
60	3013145		.TUBE, PROPELLER SHAFT OIL TRANSFER	C	1
70	MS9388-028		.PACKING, PREFORMED INTRCHG WITH P/N AS3209-028	C	1
70A	AS3209-028		.PACKING, PREFORMED	C	1
80	3008370		.RING, RETAINING INTRCHG WITH P/N AS3218-130	C	1
80A	AS3218-130		.RING, RETAINING	C	1
- 90	3016925CL		.SHAFT ASSY, PROPELLER PRE-SB1563 PRE-SB1567 PRE-SB1571 INTRCHG WITH P/N 3028746 TWO-WAY INTRCHG WITH P/N 01R3016925 TWO-WAY INTRCHG WITH P/N 02R3016925 ONE-WAY INTRCHG WITH P/N 03R3016925	C	1
	01R3016925		.SHAFT ASSY, PROPELLER REWORKED FROM P/N 3016925 POST-SB1563 PRE-SB1567 PRE-SB1571 TWO-WAY INTRCHG WITH P/N 02R3016925 ONE-WAY INTRCHG WITH P/N 04R3016925	C	RWK
CONTINUED					

- ITEM NOT ILLUSTRATED

EFF MODEL C PT6A-21	EFF MODEL	EFF MODEL
------------------------	-----------	-----------

**72-11-00**  
**Figure 3**  
Page 3  
Aug 27/2004

**PRATT & WHITNEY CANADA**  
**ILLUSTRATED PARTS CATALOG**  
**MANUAL PART NO. 3013244**



C52104A

Gearbox Assembly, Propeller Reduction - Carrier Set and  
 Prop Shaft (PT6A-21)  
 Figure 3 (Sheet 2 of 2)

**72-11-00**

**Figure 3**

Page 4

Aug 27/2004

**PRATT & WHITNEY CANADA**  
**ILLUSTRATED PARTS CATALOG**  
**MANUAL PART NO. 3013244**

FIG. ITEM	PART NUMBER	AIRLINE PART NUMBER	NOMENCLATURE	EFFECT CODE	UNITS PER ASSY
3	02R3016925		. SHAFT ASSY, PROPELLER REWORKED FROM P/N 3016925 & 01R3016925 POST-SB1567 PRE-SB1571 ONE-WAY INTRCHG WITH P/N 05R3016925	C	RWK
	03R3016925		. SHAFT ASSY, PROPELLER REWORKED FROM P/N 3016925 POST-SB1571	C	RWK
	04R3016925		. SHAFT ASSY, PROPELLER REWORKED FROM P/N 01R3016925 POST-SB1571	C	RWK
	05R3016925		. SHAFT ASSY, PROPELLER REWORKED FROM P/N 02R3016925 POST-SB1571	C	RWK
	90A 3028746		. SHAFT & SLEEVE SET, PROPELLER PRE-SB1393 PRE-SB1563 PRE-SB1567 PRE-SB1571 NONINTR WITH P/N 3028816 TWO-WAY INTRCHG WITH P/N 01R3028746 TWO-WAY INTRCHG WITH P/N 02R3028746 ONE-WAY INTRCHG WITH P/N 03R3028746	C	REF
	01R3028746		. SHAFT & SLEEVE SET, PROPELLER REWORKED FROM P/N 3028746 POST-SB1563 PRE-SB1567 PRE-SB1571 TWO-WAY INTRCHG WITH P/N 02R3028746 ONE-WAY INTRCHG WITH P/N 04R3028746	C	RWK
	02R3028746		. SHAFT & SLEEVE SET, PROPELLER REWORKED FROM P/N 3028746 & 01R3028746 POST-SB1567 PRE-SB1571 ONE-WAY INTRCHG WITH P/N 05R3028746	C	RWK
	03R3028746		. SHAFT & SLEEVE SET, PROPELLER REWORKED FROM P/N 3028746 POST-SB1571	C	RWK

CONTINUED

- ITEM NOT ILLUSTRATED

EFF MODEL C PT6A-21	EFF MODEL	EFF MODEL
------------------------	-----------	-----------

**72-11-00**  
**Figure 3**  
Page 5  
Aug 27/2004

**PRATT & WHITNEY CANADA**  
**ILLUSTRATED PARTS CATALOG**  
**MANUAL PART NO. 3013244**

FIG. ITEM	PART NUMBER	AIRLINE PART NUMBER	NOMENCLATURE	EFFECT CODE	UNITS PER ASSY
			1234567		
3	04R3028746		. SHAFT & SLEEVE SET, PROPELLER REWORKED FROM P/N 01R3028746 POST-SB1571	C	RWK
	05R3028746		. SHAFT & SLEEVE SET, PROPELLER REWORKED FROM P/N 02R3028746 POST-SB1571	C	RWK
90B	DELETED		TRANSFERRED TO ITEM 90A		
90C	3028816		. SHAFT & SLEEVE SET, PROPELLER POST-SB1393 PRE-SB1426 PRE-SB1563 PRE-SB1567 PRE-SB1571 NONINTR WITH P/N 3109959-01 TWO-WAY INTRCHG WITH P/N 01R3028816 TWO-WAY INTRCHG WITH P/N 02R3028816 ONE-WAY INTRCHG WITH P/N 03R3028816	C	REF
	01R3028816		. SHAFT & SLEEVE SET, PROPELLER REWORKED FROM P/N 3028816 POST-SB1563 PRE-SB1567 PRE-SB1571 TWO-WAY INTRCHG WITH P/N 02R3028816 ONE-WAY INTRCHG WITH P/N 04R3028816	C	RWK
	02R3028816		. SHAFT & SLEEVE SET, PROPELLER REWORKED FROM P/N 3028816 & 01R3028816 POST-SB1567 PRE-SB1571 ONE-WAY INTRCHG WITH P/N 05R3028816	C	RWK
	03R3028816		. SHAFT & SLEEVE SET, PROPELLER REWORKED FROM P/N 3028816 POST-SB1571	C	RWK
	04R3028816		. SHAFT & SLEEVE SET, PROPELLER REWORKED FROM P/N 01R3028816 POST-SB1571	C	RWK
	05R3028816		. SHAFT & SLEEVE SET, PROPELLER REWORKED FROM P/N 02R3028816 POST-SB1571	C	RWK

CONTINUED

- ITEM NOT ILLUSTRATED

EFF MODEL C PT6A-21	EFF MODEL	EFF MODEL
------------------------	-----------	-----------

**72-11-00**  
**Figure 3**  
Page 6  
Aug 27/2004



**PRATT & WHITNEY CANADA**  
**ILLUSTRATED PARTS CATALOG**  
**MANUAL PART NO. 3013244**

FIG. ITEM	PART NUMBER	AIRLINE PART NUMBER	NOMENCLATURE	EFFECT CODE	UNITS PER ASSY
			1234567		
3					
- 90D	3109959-01		.SHAFT & SLEEVE SET, PROPELLER SEE NOTE 7 POST-SB1426 PRE-SB1563 PRE-SB1567 INTRCHG WITH P/N 3109959-02 TWO-WAY INTRCHG WITH P/N 01R3109959-01 TWO-WAY INTRCHG WITH P/N 02R3109959-01	C	REF
	01R3109959-01		.SHAFT & SLEEVE SET, PROPELLER REWORKED FROM P/N 3109959-01 POST-SB1563 PRE-SB1567 TWO-WAY INTRCHG WITH P/N 02R3109959-01	C	RWK
	02R3109959-01		.SHAFT & SLEEVE SET, PROPELLER REWORKED FROM P/N 3109959-01 & 01R3109959-01 POST-SB1567	C	RWK
- 90E	3109959-02		.SHAFT & SLEEVE SET, PROPELLER PRE-SB1567R1 TWO-WAY INTRCHG WITH P/N 01R3109959-02 TWO-WAY INTRCHG WITH P/N 3048696-01	C	REF
	01R3109959-02		.SHAFT & SLEEVE SET, PROPELLER REWORKED FROM P/N 3109959-02 PRE-SB1567 TWO-WAY INTRCHG WITH P/N 3048696-01	C	RWK
90F	3048696-01		.SHAFT & SLEEVE SET, PROPELLER MAY BE OBTAINED BY REWORK OF P/N 3109959-02 OR 01R3109959-02 POST-SB1567 PRE-SB1598 TWO-WAY INTRCHG WITH P/N 3054062-01	C	REF
- 90G	3054063-01		.SHAFT & SLEEVE SET, PROPELLER POST-SB1598	C	REF
100	3003435		..DOWEL, STRAIGHT	C	2
- 100A	DELETED		TRANSFERRED TO ITEM 115		
110	3003999		..SHAFT, PROPELLER COMPONENT OF P/N 3016925CL, 3028746 & 3028816 PRE-SB1426 NONINTR WITH P/N 3109952-01	C	1

CONTINUED

- ITEM NOT ILLUSTRATED

EFF MODEL C PT6A-21	EFF MODEL	EFF MODEL
------------------------	-----------	-----------

**72-11-00**  
**Figure 3**  
Page 7  
Aug 27/2004

**PRATT & WHITNEY CANADA**  
**ILLUSTRATED PARTS CATALOG**  
**MANUAL PART NO. 3013244**

FIG. ITEM	PART NUMBER	AIRLINE PART NUMBER	NOMENCLATURE	EFFECT CODE	UNITS PER ASSY
			1234567		
3					
- 110A	3109952-01		.. SHAFT, PROPELLER COMPONENT OF P/N 3109959-01 SEE NOTE 7 POST-SB1426 INTRCHG WITH P/N 3110277-01	C	1
- 110B	3110277-01		.. SHAFT, PROPELLER COMPONENT OF P/N 3109959-02 PRE-SB1567R1 TWO-WAY INTRCHG WITH P/N 3048695-01	C	1
110C	3048695-01		.. SHAFT, PROPELLER COMPONENT OF P/N 3048696-01 POST-SB1567R1 PRE-SB1598	C	1
- 110D	3054062-01		.. SHAFT ASSEMBLY, PROPELLER COMPONENT OF P/N 3054063-01 POST-SB1598	C	1
- 113	3048695-01		... SHAFT, PROPELLER COMPONENT OF P/N 3054062-01 POST-SB1598	C	NP
- 115	3003435		... DOWEL, STRAIGHT COMPONENT OF P/N 3054062-01 POST-SB1598	C	2
- 120	3016923		.. SLEEVE, PROPELLER SHAFT OIL TRANSFER COMPONENT OF P/N 3028746 PRE-SB1393 NONINTR WITH P/N 3028815	C	1
120A	3028815		.. SLEEVE, PROPELLER SHAFT OIL TRANSFER COMPONENT OF P/N 3048696-01 AND 3054063-01 POST-SB1393 POST-SB1598	C	1
123	3028819		. HOUSING, PROPELLER SHAFT OIL TRANSFER USE WITH P/N 3028816 POST-SB1393	C	1
124	AS3209-040		. PACKING, PREFORMED POST-SB1393	C	3
125	3004187		. BOLT, LOCATING, OIL TRANSFER LINER USE WITH P/N 3028819 POST-SB1393	C	1
126	3021572		. WASHER, KEY USE WITH P/N 3028819 POST-SB1393	C	1

CONTINUED

- ITEM NOT ILLUSTRATED

EFF MODEL C PT6A-21	EFF MODEL	EFF MODEL
------------------------	-----------	-----------

**72-11-00**

**Figure 3**

Page 8

Aug 27/2004

**PRATT & WHITNEY CANADA**  
**ILLUSTRATED PARTS CATALOG**  
**MANUAL PART NO. 3013244**

FIG. ITEM	PART NUMBER	AIRLINE PART NUMBER	1234567 NOMENCLATURE	EFFECT CODE	UNITS PER ASSY
3					
130	DELETED				
140	3004034		.RING, RETAINING INTRCHG WITH P/N AS3218-138	C	1
- 140A	AS3218-138		.RING, RETAINING	C	1
145	AS3209-040		.PACKING, PREFORMED	C	1
150	3012026		.RUNNER, PROPELLER SHAFT OIL SEAL PRE-SB1431 PRE-SB1426 NONINTR WITH P/N 3111841-01	C	1
150A	3109951-01		.RUNNER, PROPELLER SHAFT OIL SEAL POST-SB1426 PRE-SB1381 PRE-SB1431 NONINTR WITH P/N 3111230-01	C	1
150B	3111230-01		.RUNNER, PROPELLER SHAFT OIL SEAL POST-SB1426 POST-SB1431 PRE-SB1381 SEE NOTE 6	C	1
- 150C	3111841-01		.RUNNER, PROPELLER SHAFT OIL SEAL PRE-SB1426 POST-SB1431 PRE-SB1381 SEE NOTE 6	C	1
- 150D	DELETED				
- 150E	3114662-01		.RUNNER, PROPELLER SHAFT OIL SEAL POST-SB1426 POST-SB1431 POST-SB1381	C	1
160	3002444		.SPACER, ADJUSTING	C	1
170	3004035		.GEAR, BEVEL, FRONT ACCESSORY DRIVE	C	1
180	3009181		.WASHER, KEY NONINTR WITH P/N 3109949-01	C	1
180A	3109949-01		.WASHER, KEY USE WITH P/N 3109959-01 POST-SB1426 SEE NOTE 7	C	1
190	3004192		.NUT, SPANNER INTRCHG WITH P/N 3109950-01	C	1

CONTINUED

- ITEM NOT ILLUSTRATED

EFF MODEL C PT6A-21	EFF MODEL	EFF MODEL
------------------------	-----------	-----------

**72-11-00**  
**Figure 3**  
Page 9  
Aug 27/2004

**PRATT & WHITNEY CANADA**  
**ILLUSTRATED PARTS CATALOG**  
**MANUAL PART NO. 3013244**

FIG. ITEM	PART NUMBER	AIRLINE PART NUMBER	NOMENCLATURE	EFFECT CODE	UNITS PER ASSY
			1234567		
3					
- 190A	3109950-01		.NUT, PLAIN, ROUND USE WITH P/N 3109959-01 POST-SB1426 SEE NOTE 7	C	1
200	3003476		.BEARING, ROLLER, FLANGED INTRCHG WITH P/N 3032615	C	1
200A	3032615		.BEARING OPTION (IC) (IC) CONSISTS OF:	C	1
	3003476		..BEARING, ROLLER, FLANGED		AR
	3028007		..BEARING, ROLLER, FLANGED		AR
	3102454-01		..BEARING, ROLLER, FLANGED		AR
	3031714		..BEARING, ROLLER, FLANGED		AR
			ATTACHING PARTS		
210	3012161		.BOLT, MACHINE, HEX INTRCHG WITH P/N MS9519-08	C	4
210A	MS9519-08		.BOLT, MACHINE, HEX	C	4
220	3001539		.WASHER, TAB INTRCHG WITH P/N 3021572	C	4
220A	3021572		.WASHER, KEY POST-SB1281	C	4
			-----*-----		
230	3013132		.CARRIER, SECOND-STAGE REDUCTION ATTACHING PARTS	C	1
240	3007319		.NUT, PLAIN, ROUND	C	1
250	3007310		.WASHER, KEY PRE-PT6A SPB NO.72 TWO-WAY INTRCHG WITH P/N 3049871-01	C	1
- 250A	3049871-01		.WASHER, KEY POST-PT6A SPB NO.72	C	1
			-----*-----		
260	3013143		.NOZZLE, OIL, SECOND-STAGE REDUCTION ATTACHING PARTS	C	5
- 270	3011949		.BOLT, MACHINE, HEX INTRCHG WITH P/N MS9489-06	C	5
270A	MS9518-06		.BOLT, MACHINE, HEX	C	5
270B	MS9489-06		.BOLT, MACHINE, HEX	C	5
280	ST3010-09		.WASHER, KEY, LOCKING INTRCHG WITH P/N MS9276-09	C	5

CONTINUED

- ITEM NOT ILLUSTRATED

EFF MODEL C PT6A-21	EFF MODEL	EFF MODEL
------------------------	-----------	-----------

**72-11-00**

**Figure 3**

Page 10

Aug 27/2004

**PRATT & WHITNEY CANADA**  
**ILLUSTRATED PARTS CATALOG**  
**MANUAL PART NO. 3013244**

FIG. ITEM	PART NUMBER	AIRLINE PART NUMBER	NOMENCLATURE	EFFECT CODE	UNITS PER ASSY
			1234567		
3					
- 280A	MS9276-09		.WASHER, KEY, LOCKING INTRCHG WITH P/N 3016598	C	5
- 280B	3016598		.WASHER, KEY 0.195 NOM ID PRE-PT6A SPB NO.33 TWO-WAY INTRCHG WITH P/N ST3371-01	C	5
- 280C	ST3371-01		.WASHER, KEY 0.195 NOM ID POST-PT6A SPB NO.33  -----*-----	C	5
290	3004219		.SCREW, PLANET GEAR BOLT PRE-SB1397 NONINTR WITH P/N 3100142-01	C	5
290A	3100142-01		.SCREW, PLANET GEAR BOLT POST-SB1397	C	5
- 300	3004596		.WASHER, KEY INTRCHG WITH P/N 3028453	C	5
300A	3028453		.WASHER, KEY POST-SB1281	C	5
310	3010092CL		.GEAR ASSY, PLANET, SECOND-STAGE REDUCTION REFER TO P/N 3008012CL FOR GEAR CLASS SIZES SEE NOTE 1 NONINTR WITH P/N 3029450 SELECT AT ASSEMBLY	C	5
	3010092CL9		.GEAR ASSY, SECOND-STAGE		AR
	3010092CL10		.GEAR ASSY, SECOND-STAGE		AR
	3010092CL11		.GEAR ASSY, SECOND-STAGE		AR
	3010092CL12		.GEAR ASSY, SECOND-STAGE		AR
- 310A	3029450		.GEAR SET, PLANET, SECOND-STAGE REDUCTION REFER TO P/N 3008012CL FOR GEAR CLASS & SIZES SEE NOTE 1 AND 4 POST-SB1258	C	REF
- 310B	3027759CL		.GEAR ASSY, PLANET, SECOND-STAGE REDUCTION REFER TO P/N 3008012CL FOR GEAR CLASS SIZES SEE NOTE 1, 2 AND 4 SELECT AT ASSEMBLY	C	REF
	3027759CL9		.GEAR ASSY, SECOND-STAGE		AR

CONTINUED

- ITEM NOT ILLUSTRATED

EFF MODEL C PT6A-21	EFF MODEL	EFF MODEL
------------------------	-----------	-----------

**72-11-00**

**Figure 3**

Page 11

Aug 27/2004

**PRATT & WHITNEY CANADA**  
**ILLUSTRATED PARTS CATALOG**  
**MANUAL PART NO. 3013244**

FIG. ITEM	PART NUMBER	AIRLINE PART NUMBER	NOMENCLATURE	EFFECT CODE	UNITS PER ASSY
			1234567		
3			.GEAR ASSY, SECOND-STAGE		AR
			.GEAR ASSY, SECOND-STAGE		AR
			.GEAR ASSY, SECOND-STAGE		AR
	- 310C	3032259CL	.GEAR ASSY, PLANET, SECOND-STAGE REDUCTION REFER TO P/N 3008012CL FOR GEAR CLASS SIZES SEE NOTE 1, 2 AND 4 POST-SB1338 PRE-SB1404 NONINTR WITH P/N 3032267CL SELECT AT ASSEMBLY	C	REF
		3032259CL9	.GEAR ASSY, SECOND-STAGE		AR
		3032259CL10	.GEAR ASSY, SECOND-STAGE		AR
		3032259CL11	.GEAR ASSY, SECOND-STAGE		AR
		3032259CL12	.GEAR ASSY, SECOND-STAGE		AR
	- 310D	3032267CL	.GEAR ASSY, PLANET, SECOND-STAGE REDUCTION REFER TO P/N 3008012CL FOR GEAR CLASS SIZES SEE NOTE 1, 2 AND 4 POST-SB1404 PRE-SB1554 TWO-WAY INTRCHG WITH P/N 3045840CL SELECT AT ASSEMBLY	C	REF
		3032267CL9	.GEAR ASSY, SECOND-STAGE		AR
		3032267CL10	.GEAR ASSY, SECOND-STAGE		AR
		3032267CL11	.GEAR ASSY, SECOND-STAGE		AR
		3032267CL12	.GEAR ASSY, SECOND-STAGE		AR
	- 310E	3035284CL	.GEAR ASSY, PLANET, SECOND-STAGE REDUCTION REWORKED FROM P/N 3032267CL POST-SB1404 SELECT AT ASSEMBLY	C	RWK
		3035284CL9	.GEAR ASSY, SECOND-STAGE		AR
		3035284CL10	.GEAR ASSY, SECOND-STAGE		AR
	3035284CL11	.GEAR ASSY, SECOND-STAGE		AR	
	3035284CL12	.GEAR ASSY, SECOND-STAGE		AR	

CONTINUED

- ITEM NOT ILLUSTRATED

EFF MODEL C PT6A-21	EFF MODEL	EFF MODEL
------------------------	-----------	-----------

**72-11-00**  
**Figure 3**  
Page 12  
Aug 27/2004

**PRATT & WHITNEY CANADA**  
**ILLUSTRATED PARTS CATALOG**  
**MANUAL PART NO. 3013244**

FIG. ITEM	PART NUMBER	AIRLINE PART NUMBER	NOMENCLATURE	EFFECT CODE	UNITS PER ASSY
			1234567		
3					
310F	3045840CL		.GEAR ASSY, PLANET, SECOND-STAGE REDUCTION REFER TO P/N 3045839CL FOR GEAR CLASS SIZES SEE NOTE 1 AND 4 POST-SB1554 SELECT AT ASSEMBLY	C	REF
	3045840CL7		.GEAR ASSY, SECOND-STAGE		AR
	3045840CL8		.GEAR ASSY, SECOND-STAGE		AR
	3045840CL9		.GEAR ASSY, SECOND-STAGE		AR
	3045840CL10		.GEAR ASSY, SECOND-STAGE		AR
320	3010093		..BEARING, PLAIN COMPONENT OF P/N 3010092 INTRCHG WITH P/N 3029145	C	1
- 320A	3029145		..BEARING SET, SLEEVE COMPONENT OF P/N 3029450 POST-SB1258 NONINTR WITH P/N 3029147	C	1
- 320B	3027758		..BEARING, SLEEVE COMPONENT OF P/N 3027759CL SEE NOTE 2	C	1
320C	*****		..BEARING SLEEVE OPTION (IC) SEE NOTE 3	C	REF
- 321	3028722		...BEARING, SLEEVE COMPONENT OF P/N 3029145	C	5
330	3008012CL		..GEAR, PLANET, SECOND-STAGE REDUCTION COMPONENT OF P/N 3010092CL SEE NOTE 1 SELECT AT ASSEMBLY	C	1
	3008012CL9		..GEAR, SECOND-STAGE 0.1690 - 0.1695 IN.		AR
	3008012CL10		..GEAR, SECOND-STAGE 0.1695 - 0.1700 IN.		AR
	3008012CL11		..GEAR, SECOND-STAGE 0.1700 - 0.1705 IN.		AR
	3008012CL12		..GEAR, SECOND-STAGE 0.1705 - 0.1710 IN.		AR
- 330A	3008012CL		..GEAR, PLANET, SECOND-STAGE REDUCTION COMPONENT OF P/N 3029450 SEE NOTE 1 SELECT AT ASSEMBLY	C	5

CONTINUED

- ITEM NOT ILLUSTRATED

EFF MODEL C PT6A-21	EFF MODEL	EFF MODEL
------------------------	-----------	-----------

**72-11-00**  
**Figure 3**  
Page 13  
Aug 27/2004

**PRATT & WHITNEY CANADA**  
**ILLUSTRATED PARTS CATALOG**  
**MANUAL PART NO. 3013244**

FIG. ITEM	PART NUMBER	AIRLINE PART NUMBER	NOMENCLATURE	EFFECT CODE	UNITS PER ASSY
			1234567		
3	3008012CL9		..GEAR, SECOND-STAGE 0.1690 - 0.1695 IN.		AR
	3008012CL10		..GEAR, SECOND-STAGE 0.1695 - 0.1700 IN.		AR
	3008012CL11		..GEAR, SECOND-STAGE 0.1700 - 0.1705 IN.		AR
	3008012CL12		..GEAR, SECOND-STAGE 0.1705 - 0.1710 IN.		AR
- 330B	3008012CL		..GEAR, PLANET, SECOND-STAGE REDUCTION COMPONENT OF P/N 3027759CL, 3032259CL & 3032267CL SEE NOTE 1 PRE-SB1554 SELECT AT ASSEMBLY	C	1
	3008012CL9		..GEAR, SECOND-STAGE 0.1690 - 0.1695 IN.		AR
	3008012CL10		..GEAR, SECOND-STAGE 0.1695 - 0.1700 IN.		AR
	3008012CL11		..GEAR, SECOND-STAGE 0.1700 - 0.1705 IN.		AR
	3008012CL12		..GEAR, SECOND-STAGE 0.1705 - 0.1710 IN.		AR
330C	3045839CL		..GEAR, PLANET, SECOND-STAGE REDUCTION COMPONENT OF P/N 3045840CL SEE NOTE 1 POST-SB1554 SELECT AT ASSEMBLY	C	1
	3045839CL7		..GEAR, SECOND-STAGE 0.1680 - 0.1685 IN.		AR
	3045839CL8		..GEAR, SECOND-STAGE 0.1685 - 0.1690 IN.		AR
	3045839CL9		..GEAR, SECOND-STAGE 0.1690 - 0.1695 IN.		AR
	3045839CL10		..GEAR, SECOND-STAGE 0.1695 - 0.1700 IN.		AR
340	NOT USED				
350	NOT USED				
360	NOT USED				
- 370	3009512		..SHAFT, SECOND-STAGE PLANET GEAR NONINTR WITH P/N 3027567	C	5

CONTINUED

- ITEM NOT ILLUSTRATED

EFF MODEL C PT6A-21	EFF MODEL	EFF MODEL
------------------------	-----------	-----------

**72-11-00**  
**Figure 3**  
Page 14  
Aug 27/2004



**PRATT & WHITNEY CANADA**  
**ILLUSTRATED PARTS CATALOG**  
**MANUAL PART NO. 3013244**

FIG. ITEM	PART NUMBER	AIRLINE PART NUMBER	NOMENCLATURE	EFFECT CODE	UNITS PER ASSY
			1234567		
3					
- 370A	3027567		.SHAFT, SECOND-STAGE PLANET GEAR POST-SB1258 NONINTR WITH P/N 3030890	C	5
- 370B	3030890		.SHAFT, SECOND-STAGE PLANET GEAR POST-SB1299 NONINTR WITH P/N 3031568	C	5
370C	3031568		.SHAFT, SECOND-STAGE PLANET GEAR POST-SB1332	C	5
- 380	3009509		.PIN ASSEMBLY, SECOND-STAGE PLANET GEAR NONINTR WITH P/N 3028759	C	5
380A	3028759		.PIN ASSEMBLY, SECOND-STAGE PLANET GEAR POST-SB1263 PRE-SB1397 NONINTR WITH P/N 3100147-01	C	5
380B	3100147-01		.PIN, SECOND-STAGE PLANET GEAR POST-SB1397	C	5
385	3028757		..SEPARATOR, OIL COMPONENT OF P/N 3009509 AND 3028759 POST-SB1263	C	1
390	MS9486-35		..PIN, LOCK COMPONENT OF P/N 3009509 AND 3028759	C	1
391	MS9841-09		.KEY, WOODRUFF USE WITH P/N 3100147-01 POST-SB1397	C	5
- 393	3031581		.STRAINER ELEMENT ASSEMBLY, OIL INTRCHG WITH P/N 3032995	C	5
393A	3032995		.STRAINER OPTION (IC) POST-SB1397 (IC) CONSISTS OF:	C	5
	3031581		..STRAINER, OIL		AR
	3103152-01		..STRAINER, OIL		AR
394	AS3209-011		.PACKING, PREFORMED POST-SB1397	C	5
395	3100143-01		.SEAL, OIL POST-SB1397	C	5
400	3007338		.GEAR, RING, SECOND-STAGE REDUCTION	C	1
			ATTACHING PARTS		
410	3004220		.PLATE, RETAINING	C	3

CONTINUED

- ITEM NOT ILLUSTRATED

EFF MODEL C PT6A-21	EFF MODEL	EFF MODEL
------------------------	-----------	-----------

**72-11-00**  
**Figure 3**  
Page 15  
Aug 27/2004

**PRATT & WHITNEY CANADA**  
**ILLUSTRATED PARTS CATALOG**  
**MANUAL PART NO. 3013244**

FIG. ITEM	PART NUMBER	AIRLINE PART NUMBER	NOMENCLATURE	EFFECT CODE	UNITS PER ASSY
			1234567		
3					
420	3012161		.BOLT, MACHINE, HEX INTRCHG WITH P/N MS9519-08	C	3
420A	MS9519-08		.BOLT, MACHINE, HEX	C	3
430	3001539		.WASHER, KEY INTRCHG WITH P/N 3021572	C	3
430A	3021572		.WASHER, KEY	C	3
			-----*-----		
440	3002460		.RING, RETAINING	C	3
450	3005399		.SPACER, ADJUSTING	C	1
455	MS9486-04		.PIN, STRAIGHT, HEADLESS REWORK PART USE WITH P/N 3037733 POST-SB1447	C	2
458	3102469-02		.INSERT, TACHOMETER DRIVE REWORK PART USE WITH P/N 3037733 POST-SB1447	C	1
460	3008179		.GEARSHAFT ASSEMBLY, BEVEL, ACCESSORY DRIVE PRE-SB1447 INTRCHG WITH P/N 3037733	C	1
460A	3037733		.GEARSHAFT ASSEMBLY, BEVEL, ACCESSORY DRIVE POST-SB1447 SEE NOTE 5 AND 6	C	1
470	MS9176-15		..PLUG	C	1
480	3013880		..GEARSHAFT, BEVEL	C	NP
490	3002459		.SPACER, ADJUSTING	C	2
500	3005665		.COUPLING, GOVERNOR DRIVE	C	2
510	3005666		.RING, RETAINING GOVERNOR DRIVES	C	2
520	3005664		.GEARSHAFT, BEVEL, PROPELLER AND OVERSPEED GOVERNOR DRIVES	C	2
- 600	3029147		KITS, REPAIR/SERVICE PARTS KIT, BEARING, SECOND-STAGE PLANET GEAR COMPONENT OF P/N 3029450 POST-SB1258	C	1

CONTINUED

- ITEM NOT ILLUSTRATED

EFF MODEL C PT6A-21	EFF MODEL	EFF MODEL
------------------------	-----------	-----------

**72-11-00**

**Figure 3**

Page 16

Aug 27/2004

**PRATT & WHITNEY CANADA**  
**ILLUSTRATED PARTS CATALOG**  
**MANUAL PART NO. 3013244**

FIG. ITEM	PART NUMBER	AIRLINE PART NUMBER	NOMENCLATURE	EFFECT CODE	UNITS PER ASSY
			1234567		
3					
- 600A	3032198		PARTS KIT, BEARING, SECOND-STAGE PLANET GEAR USE WITH P/N 3032259CL POST-SB1339 NONINTR WITH P/N 3032269	C	1
600B	3032269		PARTS KIT, SECOND-STAGE PLANET GEAR BEARING USE WITH P/N 3032267CL & 3045840CL PRE-SB1404 NONINTR WITH P/N 3035030	C	1
- 600C	3035030		PARTS KIT, SECOND-STAGE PLANET GEAR BEARING REQD FOR REWORK OF P/N 3032267CL POST-SB1404	C	1
- 610	3029730		.BEARING OPTION (IC) COMPONENT OF P/N 3029147 SEE NOTE 3 (IC) CONSISTS OF:	C	5
	3028474		..BEARING, SLEEVE		REF
	3028722		..BEARING, SLEEVE		REF
- 610A	3032135		.BEARING OPTION (IC) COMPONENT OF P/N 3032198 SEE NOTE 3 (IC) CONSISTS OF:	C	5
	3100135-06		..BEARING, SLEEVE		REF
	3100138-05		..BEARING, SLEEVE		REF
- 610B	3032034		.BEARING OPTION (IC) COMPONENT OF P/N 3032269 SEE NOTE 3 (IC) CONSISTS OF:	C	5
	3100126-06		..BEARING, SLEEVE		REF
	3100131-06		..BEARING, SLEEVE		REF
- 610C	3032363		.BEARING OPTION (IC) COMPONENT OF P/N 3035030 SEE NOTE 3 (IC) CONSISTS OF:	C	5
	3101984-02		..BEARING, SLEEVE		REF
	3101985-02		..BEARING, SLEEVE		REF
			NOTE 1: SELECT FIVE OF EQUAL CLASS AT ASSEMBLY, DIMENSION REFERS TO TOOTH CHORDAL WIDTH		
			CONTINUED		

- ITEM NOT ILLUSTRATED

EFF MODEL C PT6A-21	EFF MODEL	EFF MODEL
------------------------	-----------	-----------

**72-11-00**  
**Figure 3**  
Page 17  
Aug 27/2004

**PRATT & WHITNEY CANADA**  
**ILLUSTRATED PARTS CATALOG**  
**MANUAL PART NO. 3013244**

FIG. ITEM	PART NUMBER	AIRLINE PART NUMBER	NOMENCLATURE	EFFECT CODE	UNITS PER ASSY
3			1234567  <u>NOTE 2:</u> FITTED TO A LIMITED NUMBER OF ENGINES. WILL NOT BE SUPPLIED AS A SPARE  <u>NOTE 3:</u> BEARINGS MUST BE FITTED IN SETS OF FIVE AND NOT MIXED WITH OTHERS IDENTIFIED DIFFERENTLY, THEY MUST BE PROCURED USING THE BEARING PARTS KIT P/N  <u>NOTE 4:</u> GEAR ASSEMBLIES AND SETS ARE NOT PROCURABLE, DETAIL PARTS CAN BE ORDERED INDIVIDUALLY, SEE NOTE 3  <u>NOTE 5:</u> FIELD REIDENTIFICATION NUMBER ONLY, WILL NOT BE SUPPLIED AS SPARE  <u>NOTE 6:</u> OBTAINED BY REWORK AND REIDENTIFICATION  <u>NOTE 7:</u> PART NUMBERS AS INDICATED BELOW MUST BE INTRODUCED AS A SET; 3109952-01, 3109951-01, 3109950-01 AND 3109949-01		

- ITEM NOT ILLUSTRATED

EFF MODEL	EFF MODEL	EFF MODEL

**72-11-00**

**Figure 3**

Page 18

Aug 27/2004

Gearbox Assembly, Propeller  
Reduction - Carrier Balancing  
Assembly (PT6A-21)

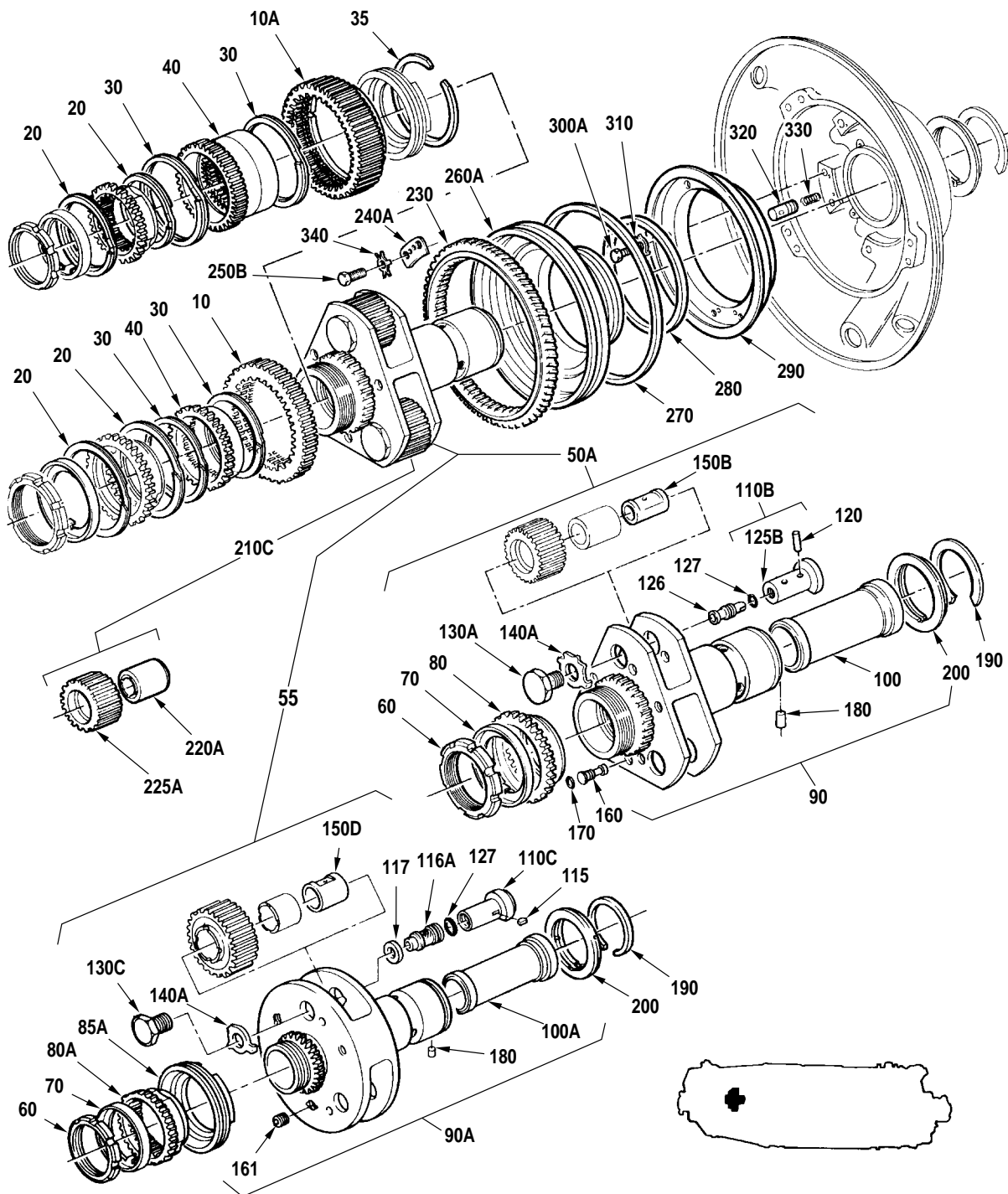
**72-11-00**

**Figure 4**

Page 1

Aug 27/2004

PRATT & WHITNEY CANADA  
 ILLUSTRATED PARTS CATALOG  
 MANUAL PART NO. 3013244



C52087E

Gearbox Assembly, Propeller Reduction - Carrier  
 Balancing Assembly (PT6A-21)  
 Figure 4

**72-11-00**

**Figure 4**

Page 2

Aug 27/2004

**PRATT & WHITNEY CANADA**  
**ILLUSTRATED PARTS CATALOG**  
**MANUAL PART NO. 3013244**

FIG. ITEM	PART NUMBER	AIRLINE PART NUMBER	NOMENCLATURE	EFFECT CODE	UNITS PER ASSY
4			1234567		
- 1			GEARBOX ASSEMBLY, PROPELLER REDUCTION BREAKDOWN CONT'D FROM FIG. 3	C	REF
10	3012285		.GEAR, SUN, SECOND-STAGE REDUCTION USE WITH P/N 3013129, 3030992, 3101606-01 AND 3100149-01 PRE-SB1367 NONINTR WITH P/N 3023250	C	1
10A	3023250		.GEAR, SUN, SECOND-STAGE REDUCTION USE WITH P/N 3105161-01 AND 3100149-04 POST-SB1367	C	1
20	3012107		.RING, RETAINING INTRCHG WITH P/N AS3217-188	C	2
- 20A	AS3217-188		.RING, RETAINING	C	2
30	3010045		.RING, RETAINING INTRCHG WITH P/N AS3217-174	C	2
- 30A	AS3217-174		.RING, RETAINING	C	2
35	3023253		.RING, RETAINING USE WITH P/N 3105161-01 AND 3100149-04 POST-SB1367	C	1
40	3012286		.COUPLING, FLEXIBLE, FIRST-STAGE REDUCTION	C	1
- 50	3013129		.CARRIER BALANCING ASSEMBLY, FIRST-STAGE REDUCTION INTRCHG WITH P/N 3027933	C	REF
50A	3027933		.CARRIER BALANCING ASSEMBLY FIRST-STAGE REDUCTION POST-SB1240 INTRCHG WITH P/N 3030992	C	REF
- 50B	3030992		.CARRIER BALANCING ASSEMBLY FIRST-STAGE REDUCTION POST-SB1297 INTRCHG WITH P/N 3101606-01	C	REF
- 50C	3101606-01		.CARRIER BALANCING ASSEMBLY FIRST-STAGE REDUCTION POST-SB1331 PRE-SB1367 PRE-SB1397 NONINTR WITH P/N 3105161-01 NONINTR WITH P/N 3100149-01	C	REF

CONTINUED

- ITEM NOT ILLUSTRATED

EFF MODEL C PT6A-21	EFF MODEL	EFF MODEL
------------------------	-----------	-----------

**72-11-00**  
**Figure 4**  
Page 3  
Aug 27/2004

**PRATT & WHITNEY CANADA**  
**ILLUSTRATED PARTS CATALOG**  
**MANUAL PART NO. 3013244**

FIG. ITEM	PART NUMBER	AIRLINE PART NUMBER	NOMENCLATURE	EFFECT CODE	UNITS PER ASSY
			1234567		
4					
- 50D	3105161-01		. CARRIER BALANCING ASSEMBLY FIRST-STAGE REDUCTION POST-SB1367	C	REF
- 50E	3100149-01		. CARRIER BALANCING ASSEMBLY FIRST-STAGE REDUCTION PRE-SB1367 POST-SB1397 PRE-SB1419 NONINTR WITH P/N 3100149-04	C	REF
- 50F	3100149-04		. CARRIER BALANCING ASSEMBLY FIRST-STAGE REDUCTION POST-SB1367 PRE-SB1419 PRE-SB1599 PRE-SB1606 NONINTR WITH P/N 3106255-01	C	REF
- 50G	3100149-05		. CARRIER BALANCING ASSEMBLY FIRST-STAGE REDUCTION POST-SB1599	C	REF
- 50H	3100149-06		. CARRIER BALANCING ASSEMBLY FIRST-STAGE REDUCTION POST-SB1606	C	REF
55	3106255-01		. CARRIER BALANCING ASSEMBLY FIRST-STAGE REDUCTION POST-SB1419 PRE-SB1484 TWO-WAY INTRCHG WITH P/N 3106255-04	C	REF
- 55A	3106255-04		. CARRIER BALANCING ASSEMBLY FIRST-STAGE REDUCTION POST-SB1484 PRE-SB1534 TWO-WAY INTRCHG WITH P/N 3106255-06	C	REF
- 55B	3106255-06		. CARRIER BALANCING ASSEMBLY FIRST-STAGE REDUCTION POST-SB1534	C	REF
60	3012287		. .NUT, PLAIN, ROUND POST-SB1240 PRE-SB1484 PRE-SB1606 TWO-WAY INTRCHG WITH P/N 3102546-01	C	1
- 60A	3102546-01		. .NUT, PLAIN, ROUND MAY BE OBTAINED BY REWORK OF P/N 3012287 POST-SB1484 POST-SB1606	C	1

CONTINUED

- ITEM NOT ILLUSTRATED

EFF MODEL C PT6A-21	EFF MODEL	EFF MODEL
------------------------	-----------	-----------

**72-11-00**

**Figure 4**

Page 4

Aug 27/2004



**PRATT & WHITNEY CANADA**  
**ILLUSTRATED PARTS CATALOG**  
**MANUAL PART NO. 3013244**

FIG. ITEM	PART NUMBER	AIRLINE PART NUMBER	NOMENCLATURE	EFFECT CODE	UNITS PER ASSY
			1234567		
4					
70	3012333		..WASHER, KEY POST-SB1240	C	1
80	3013141		..ADAPTER, SPLINED, FIRST-STAGE CARRIER COMPONENT OF P/N 3027933, 3030992, 3101606-01 AND 3100149-01 POST-SB1240 PRE-SB1367 NONINTR WITH P/N 3023252	C	1
80A	3023252		..ADAPTER, SPLINED, FIRST-STAGE REDUCTION COMPONENT OF P/N 3105161-01 AND 3100149-04 POST-SB1367 SEE NOTE 2	C	1
85	3023254		..STOP, SECOND-STAGE SUNGEAR COMPONENT OF P/N 3100149-04 POST-SB1367	C	1
- 85A	3104345-01		..STOP, SECOND-STAGE SUNGEAR USE WITH P/N 3033506 COMPONENT OF P/N 3105161-01 POST-SB1367	C	1
90	3013292		..CARRIER ASSEMBLY, FIRST-STAGE REDUCTION PRE-SB1367 PRE-SB1616 NONINTR WITH P/N 3022514 INTRCHG WITH P/N 3035807 NONINTR WITH P/N 3013292 (SB1367)	C	1
	3013292 (SB1367)		..CARRIER ASSEMBLY, FIRST-STAGE REDUCTION REWORKED FROM P/N 3013292 POST-SB1367	C	RWK
	3035807		..CARRIER ASSEMBLY, FIRST-STAGE REDUCTION REWORKED FROM P/N 3013292 POST-SB1616	C	RWK
90A	3022514		..CARRIER ASSEMBLY, FIRST-STAGE REDUCTION COMPONENT OF P/N 3100149-04 PRE-SB1419 NONINTR WITH P/N 3101420-01	C	1
- 90B	3035807		..CARRIER ASSEMBLY, FIRST-STAGE REDUCTION SEE NOTE 2	C	1

CONTINUED

- ITEM NOT ILLUSTRATED

EFF MODEL C PT6A-21	EFF MODEL	EFF MODEL
------------------------	-----------	-----------

**72-11-00**  
**Figure 4**  
Page 5  
Aug 27/2004

**PRATT & WHITNEY CANADA**  
**ILLUSTRATED PARTS CATALOG**  
**MANUAL PART NO. 3013244**

FIG. ITEM	PART NUMBER	AIRLINE PART NUMBER	NOMENCLATURE	EFFECT CODE	UNITS PER ASSY
			1234567		
4					
- 90C	3101420-01		..CARRIER ASSEMBLY, FIRST-STAGE REDUCTION COMPONENT OF P/N 3106255-01 POST-SB1419 PRE-SB1534 TWO-WAY INTRCHG WITH P/N 3101420-02	C	1
- 90D	3101420-02		..CARRIER ASSEMBLY, FIRST-STAGE REDUCTION COMPONENT OF P/N 3106255-06 MAY BE OBTAINED BY REWORK OF P/N 3101420-01 POST-SB1534	C	1
100	3004587		...SLEEVE, FIRST-STAGE CARRIER COMPONENT OF P/N 3013292 PRE-SB1616 INTRCHG WITH P/N 3021326	C	1
100A	3021326		...SLEEVE, FIRST-STAGE CARRIER COMPONENT OF P/N 3022514 AND 3035807 POST-SB1616 PRE-SB1534 TWO-WAY INTRCHG WITH P/N 3123102-01	C	1
- 100B	3123102-01		...SLEEVE, FIRST-STAGE CARRIER COMPONENT OF P/N 3101420-01 POST-SB1534	C	1
- 110	3013139		..PIN ASSEMBLY, FIRST-STAGE PLANET GEAR COMPONENT OF P/N 3013129 INTRCHG WITH P/N 3027581CL	C	3
- 110A	3027581CL1		..PIN ASSEMBLY, FIRST-STAGE PLANET GEAR 2.850 - 2.970 OZ. COMPONENT OF P/N 3027933 SEE NOTE 3 POST-SB1240 NONINTR WITH P/N 3022025CL1	C	3
110B	3022025CL1		..PIN ASSEMBLY, FIRST-STAGE PLANET GEAR 3.202 - 3.218 OZ. COMPONENT OF P/N 3030992, 3101606-01 AND 3105161-01 POST-SB1261 PRE-SB1397 NONINTR WITH P/N 3031396CL1	C	3
CONTINUED					

- ITEM NOT ILLUSTRATED

EFF MODEL C PT6A-21	EFF MODEL	EFF MODEL
------------------------	-----------	-----------

**72-11-00**  
**Figure 4**  
Page 6  
Aug 27/2004

**PRATT & WHITNEY CANADA**  
**ILLUSTRATED PARTS CATALOG**  
**MANUAL PART NO. 3013244**

FIG. ITEM	PART NUMBER	AIRLINE PART NUMBER	NOMENCLATURE	EFFECT CODE	UNITS PER ASSY
			1234567		
4					
110C	3031396CL1		..PIN, FIRST-STAGE PLANET GEAR 2.981-3.138 OZ. COMPONENT OF P/N 3100149-01 AND 3100149-04 POST-SB1397	C	3
- 110D	3027581CL2		..PIN ASSEMBLY 2.980 - 3.110 OZ. COMPONENT OF P/N 3027933 SEE NOTE 3 POST-SB1240	C	AR
- 110E	3022025CL2		..PIN ASSEMBLY 3.353 - 3.368 OZ. COMPONENT OF P/N 3030992, 3101606-01 AND 3105161-01 POST-SB1261 PRE-SB1397	C	AR
- 110F	3031396CL2		..PIN, FIRST-STAGE PLANET GEAR 3.139 - 3.312 OZ. COMPONENT OF P/N 3100149-01 AND 3100149-04 POST-SB1397	C	AR
115	MS9841-09		..KEY, WOODRUFF COMPONENT OF P/N 3100149-01 AND 3100149-04 POST-SB1397	C	3
- 116	3031581		..STRAINER ELEMENT ASSEMBLY OIL COMPONENT OF P/N 3100149-01 INTRCHG WITH P/N 3032995	C	3
116A	3032995		..STRAINER OPTION (IC) COMPONENT OF P/N 3100149-01 AND 310014-04 POST-SB1397 (IC) CONSISTS OF:	C	3
	3031581		...STRAINER, OIL		AR
	3103152-01		...STRAINER, OIL		AR
117	3100143-01		..SEAL, OIL COMPONENT OF P/N 3100149-01 POST-SB1397	C	3
120	MS9486-35		...PIN, LOCK COMPONENT OF P/N 3013139, 3027581 AND 3022025	C	1
- 125	3013138		...PIN, FIRST-STAGE PLANET GEAR COMPONENT OF P/N 3013139 INTRCHG WITH P/N 3027578CL	C	NP

CONTINUED

- ITEM NOT ILLUSTRATED

EFF MODEL C PT6A-21	EFF MODEL	EFF MODEL
------------------------	-----------	-----------

**72-11-00**  
**Figure 4**  
Page 7  
Aug 27/2004

**PRATT & WHITNEY CANADA**  
**ILLUSTRATED PARTS CATALOG**  
**MANUAL PART NO. 3013244**

FIG. ITEM	PART NUMBER	AIRLINE PART NUMBER	NOMENCLATURE	EFFECT CODE	UNITS PER ASSY
			1234567		
4					
- 125A	3027578CL		...PIN, FIRST-STAGE PLANET GEAR, CLASS MARK AS FOR NHA POST-SB1240 NONINTR WITH P/N 3022024CL	C	NP
125B	3022024CL		...PIN, FIRST-STAGE PLANET GEAR COMPONENT OF P/N 3022025CL POST-SB1261	C	NP
126	3022017		..SEPARATOR, OIL, FIRST-STAGE REDUCTION COMPONENT OF P/N 3027933, 3030992, 3101606-01 AND 3105161-01 POST-SB1261 PRE-SB1397	C	3
127	MS9388-011		..PACKING, PREFORMED POST-SB1261 INTRCHG WITH P/N AS3209-011	C	3
- 127A	AS3209-011		..PACKING, PREFORMED	C	3
- 130	3004219		..SCREW, PLANET GEAR BOLT COMPONENT OF P/N 3013129 INTRCHG WITH P/N 3027576CL	C	3
130A	3027576CL		..SCREW, PLANET GEAR BOLT COMPONENT OF P/N 3027933, 3030992, 3101606-01 AND 3105161-01 POST-SB1240 PRE-SB1397 NONINTR WITH P/N 3100142-01	C	3
	3027576CL1		...SCREW, PLANET GEAR BOLT 1.082 - 1.227 OZ		AR
	3027576CL2		...SCREW, PLANET GEAR BOLT 1.249 - 1.394 OZ		AR
130B	3100142-01		..SCREW, PLANET GEAR BOLT COMPONENT OF P/N 3100149-01 AND 3100149-04 POST-SB1397	C	3
- 140	3004596		..WASHER, KEY INTRCHG WITH P/N 3028453	C	3
140A	3028453		..WASHER, KEY POST-SB1261	C	3
- 150	3009511		..SHAFT, FIRST-STAGE PLANET GEAR COMPONENT OF P/N 3013129 INTRCHG WITH P/N 3027889CL	C	3
CONTINUED					

- ITEM NOT ILLUSTRATED

EFF MODEL C PT6A-21	EFF MODEL	EFF MODEL
------------------------	-----------	-----------

**72-11-00**  
**Figure 4**  
Page 8  
Aug 27/2004

**PRATT & WHITNEY CANADA**  
**ILLUSTRATED PARTS CATALOG**  
**MANUAL PART NO. 3013244**

FIG. ITEM	PART NUMBER	AIRLINE PART NUMBER	NOMENCLATURE	EFFECT CODE	UNITS PER ASSY
			1234567		
4					
- 150A	3027889CL1		..SHAFT, FIRST-STAGE PLANET GEAR 1.871 - 1.920 OZ. COMPONENT OF P/N 3027933 SEE NOTE 4 POST-SB1240 NONINTR WITH P/N 3028145CL1	C	3
150B	3028145CL1		..SHAFT, FIRST-STAGE PLANET GEAR 1.853 - 1.907 OZ. COMPONENT OF P/N 3027933 POST-SB1257 NONINTR WITH P/N 3030885CL1	C	3
- 150C	3030885CL1		..SHAFT, FIRST-STAGE PLANET GEAR 1.853 - 1.907 OZ COMPONENT OF P/N 3030992 POST-SB1297 NONINTR WITH P/N 3031398CL1	C	3
150D	3031398CL1		..SHAFT, FIRST-STAGE PLANET GEAR 1.930 - 1.960 OZ. COMPONENT OF P/N 3101606-01, 3105161-01, 3100149-01 AND 3100149-04 POST-SB1331 PRE-SB1419 NONINTR WITH P/N 3032110CL	C	3
- 150E	3027889CL2		..SHAFT 1.921 - 1.965 OZ. COMPONENT OF P/N 3027933 SEE NOTE 5 POST-SB1240	C	AR
- 150F	3028145CL2		..SHAFT, FIRST-STAGE PLANET GEAR 1.908 - 1.953 OZ. COMPONENT OF P/N 3027933 SEE NOTE 5 POST-SB1257 NONINTR WITH P/N 3030885CL2	C	AR
- 150G	3030885CL2		..SHAFT, FIRST-STAGE PLANET GEAR 1.908 - 1.953 OZ COMPONENT OF P/N 3030992 POST-SB1297 NONINTR WITH P/N 3031398CL2	C	AR
- 150H	3031398CL2		..SHAFT, FIRST-STAGE PLANET GEAR POST-SB1331 PRE-SB1419 PRE-SB1599 PRE-SB1606 INTRCHG AS A SET WITH P/N 3032110CL	C	AR
CONTINUED					

- ITEM NOT ILLUSTRATED

EFF MODEL C PT6A-21	EFF MODEL	EFF MODEL
------------------------	-----------	-----------

**72-11-00**  
**Figure 4**  
Page 9  
Aug 27/2004

**PRATT & WHITNEY CANADA**  
**ILLUSTRATED PARTS CATALOG**  
**MANUAL PART NO. 3013244**

FIG. ITEM	PART NUMBER	AIRLINE PART NUMBER	NOMENCLATURE	EFFECT CODE	UNITS PER ASSY
			1234567		
4					
- 150J	3032110CL		..SHAFT, FIRST-STAGE PLANET SELECT CLASS AT ASSEMBLY COMPONENT OF P/N 3106255-01, 3100149-05, AND 3100149-06 POST-SB1419 POST-SB1599 POST-SB1606	C	3
	3032110CL21		...SHAFT, FIRST-STAGE PLANET 5.193 - 5.283 OZ		AR
	3032110CL22		...SHAFT, FIRST-STAGE PLANET 5.284 - 5.370 OZ.		AR
- 152	3027323		..SHAFT, FIRST-STAGE PLANET GEAR SEE NOTE 2 POST-SB1257	C	3
160	3020695		..RESTRICTOR, OIL, FIRST-STAGE REDUCTION POST-SB1240 PRE-SB1367	C	3
160	3033506		..RESTRICTOR, OIL, FIRST-STAGE REDUCTION POST-SB1367	C	3
161	3004235		..PLUG, BLANKING COMPONENT OF P/N 3100149-04	C	3
170	MS9388-010		..PACKING, PREFORMED COMPONENT OF P/N 3027933 AND 3030992 POST-SB1240 INTRCHG WITH P/N AS3209-010	C	3
- 170A	AS3209-010		..PACKING, PREFORMED	C	3
180	3004588		..DOWEL, STRAIGHT POST-SB1240	C	1
190	3004589		..RING, RETAINING POST-SB1240	C	1
200	3004586		..WASHER, THRUST POST-SB1240	C	1
- 210	3009106		.GEAR SET, PLANET, FIRST-STAGE REDUCTION CONSISTS OF THREE MATCHED GEARS INTRCHG WITH P/N 3028319 (IC) CONSISTS OF:	C	1
- 210A	3028319		.GEAR SET, PLANET, FIRST CONSISTS OF THREE MATCHED GEARS NONINTR WITH P/N 3028527 (IC) CONSISTS OF:	C	1
CONTINUED					

- ITEM NOT ILLUSTRATED

EFF MODEL C PT6A-21	EFF MODEL	EFF MODEL
------------------------	-----------	-----------

**72-11-00**

**Figure 4**

Page 10

Aug 27/2004

**PRATT & WHITNEY CANADA**  
**ILLUSTRATED PARTS CATALOG**  
**MANUAL PART NO. 3013244**

FIG. ITEM	PART NUMBER	AIRLINE PART NUMBER	1234567 NOMENCLATURE	EFFECT CODE	UNITS PER ASSY
4					
- 210B	3028527		.GEAR SET, PLANET, FIRST-STAGE REDUCTION, CONSIST OF THREE MATCHED GEARS POST-SB1257 INTRCHG WITH P/N 3029665	C	1
210C	3029665		.GEAR SET, PLANET, FIRST-STAGE REDUCTION, CONSISTS OF THREE MATCHED GEARS POST-SB1257 (IC) CONSISTS OF:	C	1
- 210D	3101530-01		.GEAR SET, PLANET, FIRST-STAGE REDUCTION POST-SB1338 PRE-SB1404 NONINTR WITH P/N 3101825-01	C	1
- 210E	3101825-01		.GEAR SET, PLANET, FIRST-STAGE REDUCTION POST-SB1404 PRE-SB1419 INTRCHG WITH P/N 3035289 NONINTR WITH P/N 3106256-01	C	1
- 210F	3027757		.GEAR SET, PLANET, FIRST-STAGE REDUCTION CONSIST OF THREE MATCHED GEARS SEE NOTE 1	C	1
- 210H	3035289		.GEAR SET, PLANET, FIRST-STAGE REDUCTION, OBTAINED BY INSTALLATION OF PART KIT P/N 3035031 POST-SB1404	C	REF
- 210J	3106256-01		.GEAR SET, PLANET, FIRST-STAGE REDUCTION POST-SB1419	C	1
- 220	3010094		..BEARING, SLEEVE COMPONENT OF P/N 3009106 AND 3028319 NONINTR WITH P/N 3029669	C	3
220A	3029669		..KIT, BEARING, FIRST-STAGE PLANET GEAR, CONTAINS THREE BEARINGS, IDENTIFIED BY OPTIONAL P/N 3022447 OR P/N 3028473 COMPONENT OF P/N 3029665 POST-SB1257	C	1

CONTINUED

- ITEM NOT ILLUSTRATED

EFF MODEL C PT6A-21	EFF MODEL	EFF MODEL
------------------------	-----------	-----------

**72-11-00**

**Figure 4**

Page 11

Aug 27/2004

**PRATT & WHITNEY CANADA**  
**ILLUSTRATED PARTS CATALOG**  
**MANUAL PART NO. 3013244**

FIG. ITEM	PART NUMBER	AIRLINE PART NUMBER	NOMENCLATURE	EFFECT CODE	UNITS PER ASSY
			1234567		
4					
- 220B	3032197		..PARTS KIT-BEARING, FIRST-STAGE PLANET GEAR, CONTAINS THREE BEARINGS IDENTIFIED BY OPTIONAL P/N 3100135-05 OR P/N 3100138-04 POST-SB1338 NONINTR WITH P/N 3032268	C	1
- 220C	3032268		..PARTS KIT, BEARING, FIRST-STAGE PLANET GEAR, CONTAINS THREE BEARINGS IDENTIFIED BY OPTIONAL P/N 3100126-05 OR P/N 3100131-05 COMPONENT OF P/N 3101825-01 NONINTR WITH P/N 3032281	C	NP
- 220D	3035031		..PARTS KIT, BEARING, FIRST-STAGE PLANET GEAR, CONTAINS THREE BEARINGS IDENTIFIED BY OPTIONAL P/N 3101984-01 OR P/N 3101985-01 SEE NOTE 6	C	1
- 220E	3027756		..BEARING, SLEEVE COMPONENT OF P/N 3027757 SEE NOTE 1	C	3
- 220F	3032281		..PARTS KIT, BEARING, FIRST-STAGE PLANET GEAR, CONTAINS THREE BEARINGS IDENTIFIED BY OPTIONAL P/N 3100126-03 OR P/N 3100131-03 COMPONENT OF P/N 3106256-01 POST-SB1419	C	NP
- 225	3009105		..GEAR, PLANET COMPONENT OF P/N 3009106 AND 3027757	C	NP
225A	3028318		..GEAR, PLANET, FIRST-STAGE REDUCTION COMPONENT OF P/N 3028319, 3028527 AND 3029665 NONINTR WITH P/N 3025559	C	NP
- 225B	3025559		..GEAR, PLANET, FIRST-STAGE REDUCTION COMPONENT OF P/N 3106256-01	C	NP
230	3007307		.GEAR, RING, FIRST-STAGE REDUCTION INTRCHG WITH P/N 3031237	C	1
- 230A	3031237		.GEAR, RING, FIRST-STAGE REDUCTION INTRCHG WITH P/N 3031265	C	1

CONTINUED

- ITEM NOT ILLUSTRATED

EFF MODEL C PT6A-21	EFF MODEL	EFF MODEL
------------------------	-----------	-----------

**72-11-00**  
**Figure 4**  
Page 12  
Aug 27/2004



**PRATT & WHITNEY CANADA**  
**ILLUSTRATED PARTS CATALOG**  
**MANUAL PART NO. 3013244**

FIG. ITEM	PART NUMBER	AIRLINE PART NUMBER	NOMENCLATURE	EFFECT CODE	UNITS PER ASSY
			1234567		
4					
- 230B	3031265		.GEAR, RING, FIRST-STAGE REDUCTION	C	1
- 240	3004238		.PLATE RETAINING, FIRST-STAGE RING GEAR NONINTR WITH P/N 3022850	C	3
240A	3022850		.PLATE RETAINING, FIRST-STAGE RING GEAR	C	3
			ATTACHING PARTS		
- 250	3012165		..BOLT, MACHINE, DRD, HEX 0.250-28J X 0.625 USE WITH P/N 3004238 INTRCHG WITH P/N MS9530-08	C	6
- 250A	MS9530-08		..BOLT, MACHINE, DRD HEX 0.250-28J X 0.625 USE WITH P/N 3004238 NONINTR WITH P/N MS9519-08	C	6
250B	MS9519-08		..BOLT, MACHINE, HEX 0.250-28J X 0.625 USE WITH P/N 3021572 AND 3022850	C	6
			-----*-----		
- 260	3012458		.PISTON, TORQUEMETER INTRCHG WITH P/N 3022273	C	1
260A	3022273		.PISTON, TORQUEMETER POST-SB1254 INTRCHG WITH P/N 3100173-01	C	1
- 260B	3100173-01		.PISTON, TORQUEMETER POST-SB1318	C	1
			ATTACHING PARTS		
270	3012457		.SEAL, RING, NON-METALLIC	C	1
280	3012456		.SEAL, RING, NON-METALLIC	C	1
290	3018869		.CYLINDER, TORQUEMETER	C	1
- 300	3011949		.BOLT, MACHINE, HEX INTRCHG WITH P/N MS9489-06	C	8
300A	MS9518-06		.BOLT, MACHINE, HEX	C	8
- 300B	MS9489-06		.BOLT, MACHINE, HEX	C	8
310	3001538		.WASHER, KEY INTRCHG WITH P/N 3016598	C	8
- 310A	3016598		.WASHER, KEY 0.195 X 0.022 PRE-PT6A SPB NO.33 TWO-WAY INTRCHG WITH P/N ST3371-01	C	8

CONTINUED

- ITEM NOT ILLUSTRATED

EFF MODEL C PT6A-21	EFF MODEL	EFF MODEL
------------------------	-----------	-----------

**72-11-00**  
**Figure 4**  
Page 13  
Aug 27/2004

**PRATT & WHITNEY CANADA**  
**ILLUSTRATED PARTS CATALOG**  
**MANUAL PART NO. 3013244**

FIG. ITEM	PART NUMBER	AIRLINE PART NUMBER	NOMENCLATURE	EFFECT CODE	UNITS PER ASSY
4			1234567		
- 310B	ST3371-01		.WASHER, KEY 0.210 X 0.022 POST-PT6A SPB NO.33 -----*-----	C	8
320	3012347		.VALVE, TORQUEMETER	C	1
330	3004244		.SPRING, TORQUEMETER VALVE	C	1
340	3021572		..WASHER, KEY USE WITH P/N MS9519-08 AND 3022850	C	6
			<u>NOTE 1:</u> FITTED TO A LIMITED NUMBER OF ENGINES, WILL NOT BE SUPPLIED AS A SPARE		
			<u>NOTE 2:</u> REWORKED PART, WILL NOT BE SUPPLIED AS A SPARE		
			<u>NOTE 3:</u> ORIGINAL WEIGHTS WERE 2.940-3.146 AND 3.147- 3.353 RESPECTIVELY REF SB1240		
			<u>NOTE 4:</u> ORIGINAL WEIGHT WAS 1.921-1.963 OZ		
			<u>NOTE 5:</u> ORIGINAL WEIGHT WAS 1.969-2.011 OZ		
			<u>NOTE 6:</u> BEARINGS MUST BE FITTED IN KITS OF THREE AND NOT MIXED WITH OTHERS IDENTIFIED DIFFERENTLY, THEY MUST BE PROCURED USING BEARING KIT P/N 3035031		

- ITEM NOT ILLUSTRATED

EFF MODEL C PT6A-21	EFF MODEL	EFF MODEL
------------------------	-----------	-----------

**72-11-00**

**Figure 4**

Page 14

Aug 27/2004

Housing Assembly, Propeller  
Reduction Gearbox, Front  
(PT6A-21)

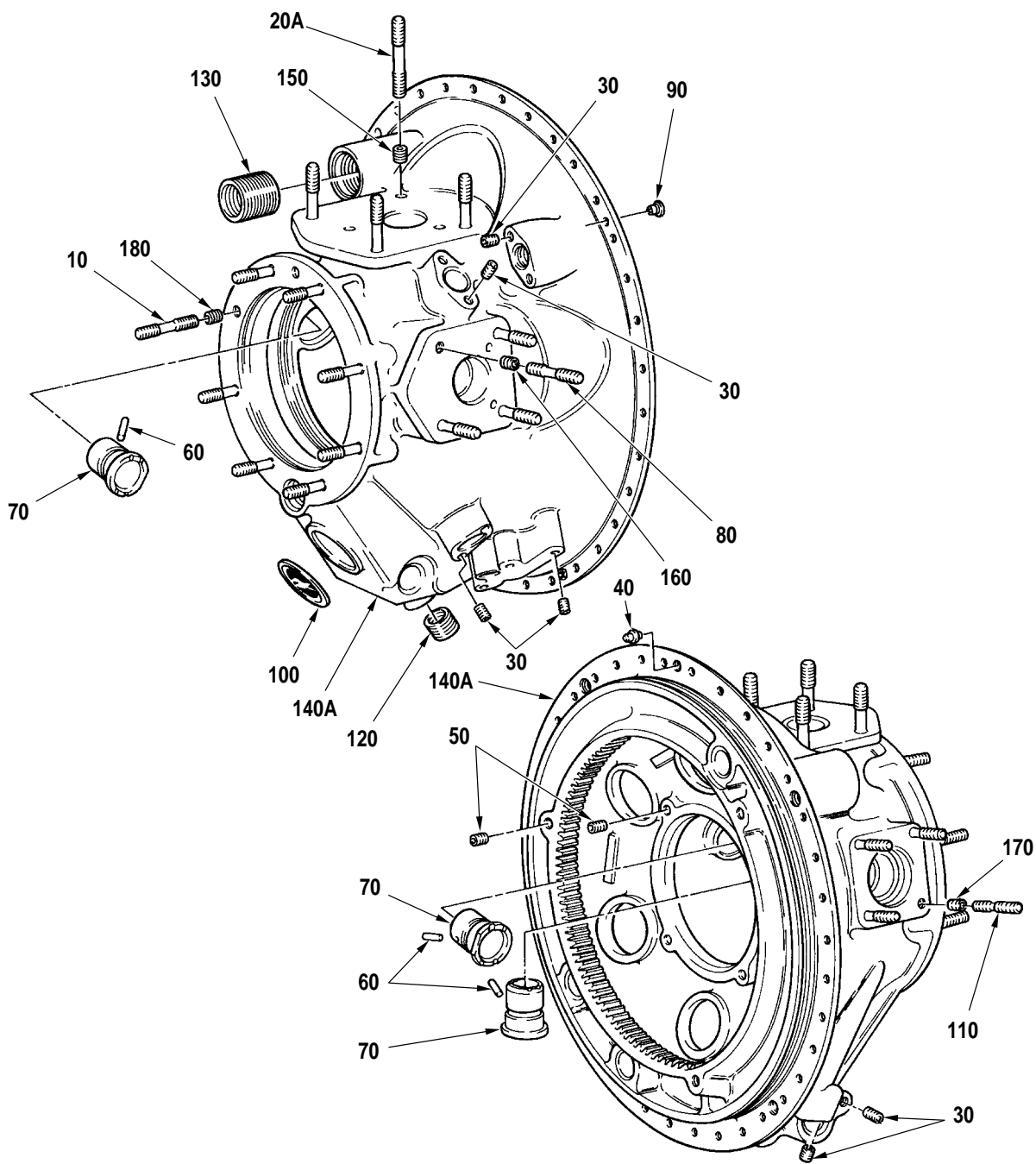
**72-11-00**

**Figure 5**

Page 1

Aug 27/2004

PRATT & WHITNEY CANADA  
ILLUSTRATED PARTS CATALOG  
MANUAL PART NO. 3013244



C52088

Housing Assembly, Propeller Reduction Gearbox, Front  
(PT6A-21)  
Figure 5

**72-11-00**

**Figure 5**

Page 2

Aug 27/2004

**PRATT & WHITNEY CANADA**  
**ILLUSTRATED PARTS CATALOG**  
**MANUAL PART NO. 3013244**

FIG. ITEM	PART NUMBER	AIRLINE PART NUMBER	1234567 NOMENCLATURE	EFFECT CODE	UNITS PER ASSY
5					
- 1	3022947		HOUSING ASSEMBLY, PROPELLER REDUCTION GEARBOX, FRONT SEE FIG. 2 FOR NHA INTRCHG WITH P/N 3028266	C	REF
- 1A	3028266		HOUSING ASSEMBLY, PROPELLER REDUCTION GEARBOX, FRONT SEE FIG. 2 FOR NHA POST-SB1236 PRE-SB1502 RESTRICTED INTERCHANGEABILITY WITH P/N 3119973-01. REFER TO APPLICABLE SERVICE BULLETIN.	C	REF
- 1B	3119973-01		HOUSING ASSEMBLY PROPELLER REDUCTION GEARBOX, FRONT FOR ENGINES BUILT TO BS571, BS671, BS788, BS1141 SEE FIG. 2 FOR NHA SEE NOTE 1 POST-SB1502	C	1
10	AN126960		.STUD, STRAIGHT FOR ENGINES BUILT TO BS571, BS671, BS788, BS1141 0.375-16-24 X 2.250	C	8
- 10A	AN126961		.STUD, STRAIGHT 0.003 IN OVS	C	AR
- 10B	AN126962		.STUD, STRAIGHT 0.006 IN OVS	C	AR
- 20	AN126372		.STUD, STRAIGHT 0.3125-18-24 X 2.125 INTRCHG WITH P/N AN126366	C	4
20A	AN126366		.STUD, STRAIGHT 0.3125-18-24 X 2.062 POST-SB1232	C	4
- 20B	AN126373		.STUD, STRAIGHT 0.003 IN OVS INTRCHG WITH P/N AN126367	C	AR
- 20C	AN126367		.STUD, STRAIGHT 0.003 IN OVS POST-SB1232	C	AR
- 20D	AN126374		.STUD, STRAIGHT 0.006 IN OVS INTRCHG WITH P/N AN126368	C	AR
- 20E	AN126368		.STUD, STRAIGHT 0.006 IN OVS POST-SB1232	C	AR

CONTINUED

- ITEM NOT ILLUSTRATED

EFF MODEL C PT6A-21	EFF MODEL	EFF MODEL
------------------------	-----------	-----------

**72-11-00**  
**Figure 5**  
Page 3  
Aug 27/2004

**PRATT & WHITNEY CANADA**  
**ILLUSTRATED PARTS CATALOG**  
**MANUAL PART NO. 3013244**

FIG. ITEM	PART NUMBER	AIRLINE PART NUMBER	NOMENCLATURE	EFFECT CODE	UNITS PER ASSY
			1234567		
5					
30	MS124775		.INSERT, HELICAL COIL FOR ENGINES BUILT TO BS571, BS671, BS788, BS1141	C	12
40	3004127		.DOWEL FOR ENGINES BUILT TO BS571, BS671, BS788, BS1141	C	1
50	MS124736		.INSERT, HELICAL COIL FOR ENGINES BUILT TO BS571, BS671, BS788, BS1141	C	7
60	3003987		.PIN, LOCK FOR ENGINES BUILT TO BS571, BS671, BS788, BS1141	C	3
70	3006523		.BEARING, SLEEVE, FLANGED FOR ENGINES BUILT TO BS571, BS671, BS788, BS1141	C	3
- 80	AN126546		.STUD, STRAIGHT 0.3125-18-24 X 1.688 INTRCHG WITH P/N AN126336	C	4
80A	AN126336		.STUD, STRAIGHT FOR ENGINES BUILT TO BS571, BS671, BS788, BS1141 0.3125-18-24 X 1.750	C	4
- 80B	AN126547		.STUD, STRAIGHT 0.003 IN OVS INTRCHG WITH P/N AN126337	C	AR
- 80C	AN126337		.STUD, STRAIGHT 0.003 IN OVS	C	AR
- 80D	AN126548		.STUD, STRAIGHT 0.006 IN OVS INTRCHG WITH P/N AN126338	C	AR
- 80E	AN126338		.STUD, STRAIGHT 0.006 IN OVS	C	AR
90	3001941		.INSERT, FLANGE JACKING FOR ENGINES BUILT TO BS571, BS671, BS788, BS1141 PRE-PT6A SPB NO.86 TWO-WAY INTRCHG WITH P/N ST3756-01	C	4
- 90A	ST3756-01		.INSERT, FLANGE JACKING FOR ENGINES BUILT TO BS571, BS671, BS788, BS1141 POST-PT6A SPB NO.86	C	4
100	3012349		.DECAL, P&WC INSIGNIA, RIGHT INTRCHG WITH P/N 3032921	C	1

CONTINUED

- ITEM NOT ILLUSTRATED

EFF MODEL C PT6A-21	EFF MODEL	EFF MODEL
------------------------	-----------	-----------

**72-11-00**

**Figure 5**

Page 4

Aug 27/2004

**PRATT & WHITNEY CANADA**  
**ILLUSTRATED PARTS CATALOG**  
**MANUAL PART NO. 3013244**

FIG. ITEM	PART NUMBER	AIRLINE PART NUMBER	1234567 NOMENCLATURE	EFFECT CODE	UNITS PER ASSY
5					
- 100A	3032921		.DECAL, P&WC INSIGNIA, RIGHT FOR ENGINES BUILT TO BS571, BS671, BS788, BS1141	C	1
- 110	AN125994		.STUD, STRAIGHT FOR ENGINES BUILT TO BS571, BS671, BS788, BS1141 0.250-20-28 X 1.375	C	4
- 110A	AN125995		.STUD, STRAIGHT 0.003 IN OVS	C	AR
- 110B	AN125996		.STUD, STRAIGHT 0.006 IN OVS	C	AR
120	3006148		.INSERT, HELICAL COIL FOR ENGINES BUILT TO BS571, BS671, BS788, BS1141	C	1
130	3006066		.INSERT, HELICAL COIL FOR ENGINES BUILT TO BS571, BS671, BS788, BS1141	C	1
- 140	3023025		.HOUSING, PROPELLER REDUCTION GEARBOX, FRONT COMPONENT OF P/N 3022947	C	NP
140A	3028265		.HOUSING, PROPELLER REDUCTION GEARBOX, FRONT FOR ENGINES BUILT TO BS571, BS671, BS788, BS1141 COMPONENT OF P/N 3028266 AND 3119973-01	C	NP
			KITS, REPAIR/SERVICE PARTS		
150	MS122202		INSERT, HELICAL COIL, (FOR SERVICE FIX)	C	AR
160	MS122162		INSERT, HELICAL COIL, (FOR SERVICE FIX)	C	AR
170	MS122201		INSERT, HELICAL COIL, (FOR SERVICE FIX)	C	AR
180	MS122203		INSERT, HELICAL COIL, (FOR SERVICE FIX)	C	AR
			<u>NOTE 1:</u> WHEN REPLACEMENT SET IS MORE THAN ONE P/N OLD AND NEW PARTS ARE ONLY INTERCHANGEABLE IN COMPLETE SETS		

- ITEM NOT ILLUSTRATED

EFF MODEL C PT6A-21	EFF MODEL	EFF MODEL
------------------------	-----------	-----------

**72-11-00**  
**Figure 5**  
Page 5/6  
Aug 27/2004





# Housing Assembly, Reduction Gearbox, Rear (PT6A-21)

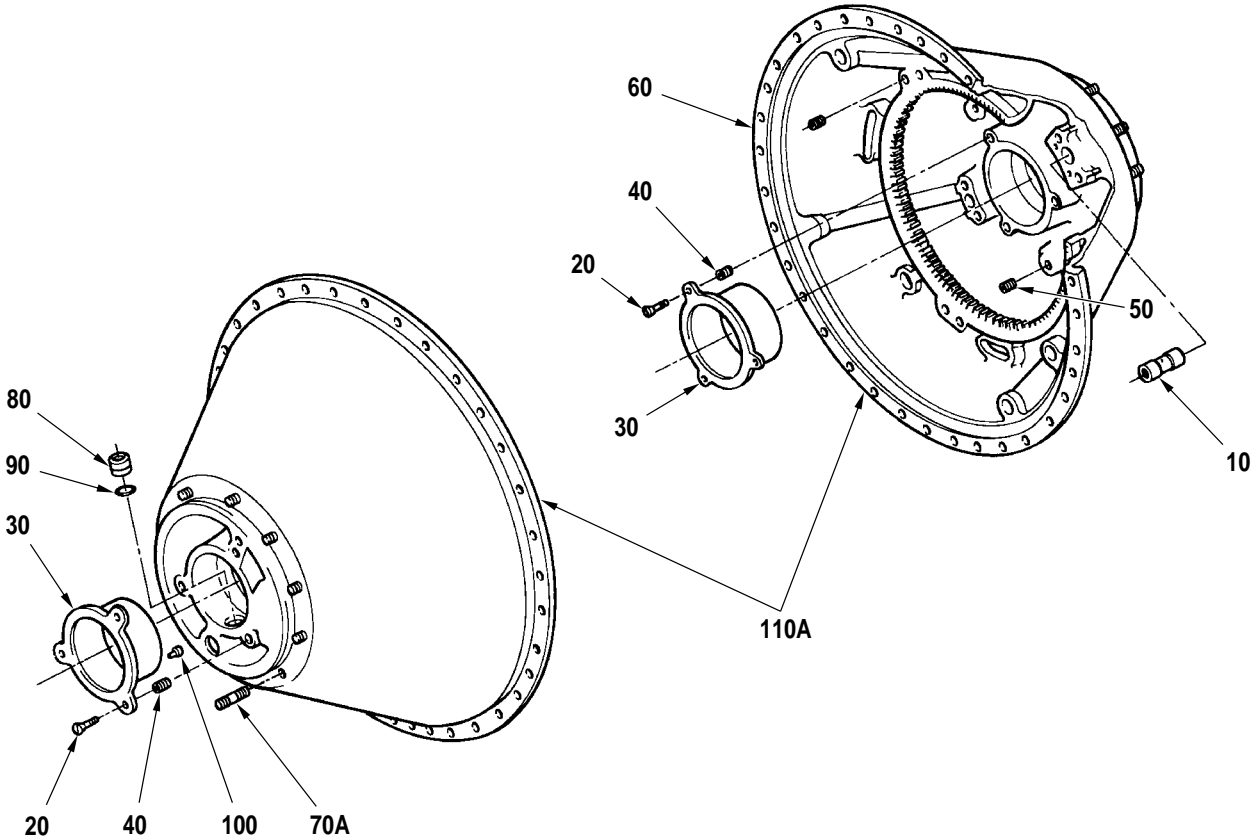
**72-11-00**

**Figure 6**

Page 1

Aug 27/2004

PRATT & WHITNEY CANADA  
ILLUSTRATED PARTS CATALOG  
MANUAL PART NO. 3013244



Housing Assembly, Reduction Gearbox, Rear (PT6A-21)  
Figure 6

C52089  
**72-11-00**  
**Figure 6**  
Page 2  
Aug 27/2004

**PRATT & WHITNEY CANADA**  
**ILLUSTRATED PARTS CATALOG**  
**MANUAL PART NO. 3013244**

FIG. ITEM	PART NUMBER	AIRLINE PART NUMBER	NOMENCLATURE	EFFECT CODE	UNITS PER ASSY
			1234567		
6					
- 1	3011298		HOUSING ASSEMBLY, REDUCTION GEARBOX, REAR SEE FIG. 2 FOR NHA NONINTR WITH P/N 3028282	C	REF
- 1A	3028282		HOUSING ASSEMBLY, REDUCTION GEARBOX, REAR SEE FIG. 2 FOR NHA POST-SB1236	C	REF
- 1B	3100749-02		INTRCHG WITH P/N 3100749-02 HOUSING ASSEMBLY, REDUCTION GEARBOX, REAR SEE FIG. 2 FOR NHA	C	REF
- 1C	3100749-04		INTRCHG WITH P/N 3100749-04 HOUSING ASSEMBLY, REDUCTION GEARBOX, REAR SEE FIG. 2 FOR NHA	C	REF
- 1D	3044254-01		PRE-SB1553 TWO-WAY INTRCHG WITH P/N 3044254-01 HOUSING ASSEMBLY, PROPELLER REDUCTION GEARBOX, REAR SEE FIG. 2 FOR NHA	C	REF
10	3012348		POST-SB1553 .SLEEVE TORQUEMETER VALVE	C	1
20	3007382		.SCREW, MACHINE	C	6
30	3029277		.PARTS KIT, BEARING, FIRST-STAGE CARRIER, CONTAINS TWO BEARINGS IDENTIFIED BY OPTIONAL P/N 3004229, 3029274 OR 3105689-01 SEE NOTE 1	C	1
40	3007311		.INSERT, SCREW THD, SELF-LOCKING	C	6
50	MS124775		.INSERT, HELICAL COIL	C	8
60	MS124736		.INSERT, HELICAL COIL	C	6
- 70	AN155032		.STUD, STEPPED INTRCHG WITH P/N AN155026	C	12
	AN155033		..STUD, STEPPED 0.003 IN OVS		AR
	AN155034		..STUD, STEPPED 0.006 IN OVS		AR
70A	AN155026		.STUD, STEPPED	C	12
	AN155027		..STUD, STEPPED 0.003 IN OVS		AR

CONTINUED

- ITEM NOT ILLUSTRATED

EFF MODEL C PT6A-21	EFF MODEL	EFF MODEL
------------------------	-----------	-----------

**72-11-00**  
**Figure 6**  
Page 3  
Aug 27/2004

**PRATT & WHITNEY CANADA**  
**ILLUSTRATED PARTS CATALOG**  
**MANUAL PART NO. 3013244**

FIG. ITEM	PART NUMBER	AIRLINE PART NUMBER	NOMENCLATURE	EFFECT CODE	UNITS PER ASSY
6	AN155028		1234567 ..STUD, STEPPED 0.006 IN OVS		AR
80	3004248		.PLUG, BLANKING	C	1
90	MS9388-013		.PACKING, PREFORMED INTRCHG WITH P/N AS3209-013	C	1
90A	AS3209-013		.PACKING, PREFORMED	C	1
100	3005713		.PIN, STEPPED 0.125 OD X 0.2187 NOM DIA	C	1
- 100A	3005713P10		.PIN, STEPPED 0.010 IN OVS	C	AR
- 110	3011297		.HOUSING, REDUCTION GEARBOX, REAR COMPONENT OF P/N 3011298	C	NP
110A	3028281		.HOUSING, REDUCTION GEARBOX, REAR COMPONENT OF P/N 3028282	C	NP
- 110B	3100748-04		.HOUSING, REDUCTION GEARBOX REAR COMPONENT OF P/N 3100749-04 PRE-SB1553 TWO-WAY INTRCHG WITH P/N 3044252-01	C	NP
- 110C	3044252-01		.HOUSING, REDUCTION GEARBOX, REAR COMPONENT OF P/N 3044254-01 POST-SB1553	C	NP
			NOTE 1: INDIVIDUAL BEARINGS MAY BE REPLACED PROVIDING THE REPLACEMENT HAS THE SAME PART NUMBER BEARINGS MUST BE PROCURED USING THE KIT PART NUMBER		

- ITEM NOT ILLUSTRATED

EFF MODEL C PT6A-21	EFF MODEL	EFF MODEL
------------------------	-----------	-----------

**72-11-00**  
**Figure 6**  
Page 4  
Aug 27/2004

# Chip Detector Installation (PT6A-21)

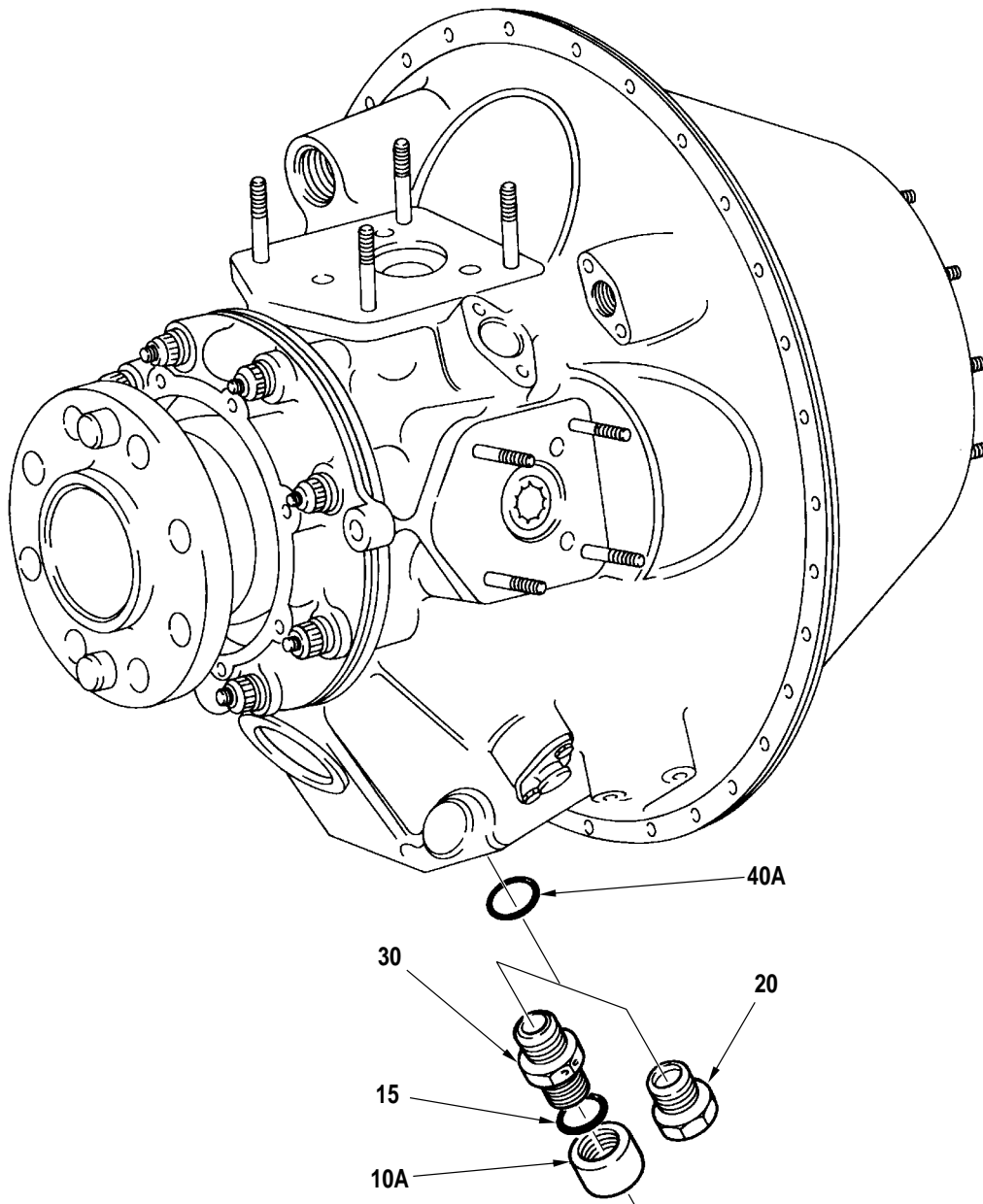
**72-11-00**

**Figure 7**

Page 1

Aug 27/2004

PRATT & WHITNEY CANADA  
ILLUSTRATED PARTS CATALOG  
MANUAL PART NO. 3013244



Chip Detector Installation (PT6A-21)  
Figure 7

C52083A

**72-11-00**

**Figure 7**

Page 2

Aug 27/2004

**PRATT & WHITNEY CANADA**  
**ILLUSTRATED PARTS CATALOG**  
**MANUAL PART NO. 3013244**

FIG. ITEM	PART NUMBER	AIRLINE PART NUMBER	NOMENCLATURE	EFFECT CODE	UNITS PER ASSY
			1234567		
7					
- 1			CHIP DETECTOR INSTALLATION SEE 72-00-00 FIG. 1 FOR NHA	C	REF
- 10	MS25043-12D		.COVER, ELECTRICAL CONNECTOR POST-SB1217	C	1
10A	3027279		.COVER, ELECTRICAL CONNECTOR SEE NOTE 1	C	1
15	MS9387-08		.PACKING, PREFORMED, USE WITH P/N 3027279 INTRCHG WITH P/N AS3208-08	C	1
- 15A	AS3208-08		.PACKING, PREFORMED USE WITH P/N 3027279	C	1
20	MS9015-08		.PLUG, MACHINE, DRD HEX INTRCHG WITH P/N MS9954-08	C	1
- 20A	MS9954-08		.PLUG, MACHINE, DRD HEX FOR ENGINES BUILT TO BS788, BS789	C	1
30	3027254		.DETECTOR OPTION (IC) POST-SB1217 INTRCHG WITH P/N 3030364 (IC) CONSISTS OF:	C	1
	3014794		..DETECTOR, CHIP, MAGNETIC		AR
	3019373		..DETECTOR, CHIP, MAGNETIC		AR
- 30A	3030364		.DETECTOR OPTION (IC) INTRCHG WITH P/N 3034081 (IC) CONSISTS OF:	C	1
	3029199		..DETECTOR, CHIP, MAGNETIC		AR
	3030359		..DETECTOR, CHIP, MAGNETIC		AR
- 30B	3034081		.DETECTOR OPTION (IC) PRE-PT6A SPB NO.56 TWO-WAY INTRCHG WITH P/N 3045950-01 (IC) CONSISTS OF:	C	1
	3030359		..DETECTOR, CHIP, MAGNETIC		AR
	3034026		..DETECTOR, CHIP, MAGNETIC		AR
- 30C	3045950-01		.DETECTOR OPTION (IC) POST-PT6A SPB NO.56 PRE-PT6A SPB NO.84 TWO-WAY INTRCHG WITH P/N 3045951-02 (IC) CONSISTS OF:	C	1
	3034026		..DETECTOR, CHIP, MAGNETIC		AR
	3045951-01		..DETECTOR, CHIP, MAGNETIC		AR

CONTINUED

- ITEM NOT ILLUSTRATED

EFF MODEL C PT6A-21	EFF MODEL	EFF MODEL
------------------------	-----------	-----------

**72-11-00**  
**Figure 7**  
Page 3  
Aug 27/2004

**PRATT & WHITNEY CANADA**  
**ILLUSTRATED PARTS CATALOG**  
**MANUAL PART NO. 3013244**

FIG. ITEM	PART NUMBER	AIRLINE PART NUMBER	NOMENCLATURE	EFFECT CODE	UNITS PER ASSY
7			1234567		
- 30D	3045951-02		.MAGNETIC, CHIP DETECTOR FOR ENGINES BUILT TO BS1141 POST-PT6A SPB NO.84	C	1
- 40	3006149		.PACKING, PREFORMED INTRCHG WITH P/N MS9388-115	C	1
40A	MS9388-115		.PACKING, PREFORMED INTRCHG WITH P/N AS3209-115	C	1
- 40B	AS3209-115		.PACKING, PREFORMED  <u>NOTE 1:</u> INTRODUCED ON NEW ENGINES AS AN ALTERNATE TO MS25043-12D	C	1

- ITEM NOT ILLUSTRATED

EFF MODEL C PT6A-21	EFF MODEL	EFF MODEL
------------------------	-----------	-----------

**72-11-00**  
**Figure 7**  
Page 4  
Aug 27/2004