

PRATT & WHITNEY CANADA
ILLUSTRATED PARTS CATALOG
MANUAL PART NO. 3013244

LIST OF EFFECTIVE PAGES

<u>CHAPTER SECTION</u>	<u>PAGE</u>	<u>DATE</u>	<u>CHAPTER SECTION</u>	<u>PAGE</u>	<u>DATE</u>
LEP	1	Aug 27/2004		10	Aug 27/2004
	2	blank		11	Aug 27/2004
				12	Aug 27/2004
Contents	1	Aug 27/2004			
	2	blank			
72-00-00 Figure 1	1	Aug 27/2004	72-00-00	1	Aug 27/2004
	2	Aug 27/2004	Figure 4	2	Aug 27/2004
	3	Aug 27/2004		3	Aug 27/2004
	4	Aug 27/2004		4	Aug 27/2004
	5	Aug 27/2004		5	Aug 27/2004
	6	Aug 27/2004		6	Aug 27/2004
	7	Aug 27/2004	72-00-00	1	Aug 27/2004
	8	Aug 27/2004	Figure 5	2	Aug 27/2004
	9	Aug 27/2004		3	Aug 27/2004
	10	Aug 27/2004		4	Aug 27/2004
72-00-00 Figure 2	1	Aug 27/2004		5	Aug 27/2004
	2	Aug 27/2004		6	Aug 27/2004
	3	Aug 27/2004		7	Aug 27/2004
	4	Aug 27/2004		8	Aug 27/2004
	5	Aug 27/2004	72-00-00	1	Aug 27/2004
	6	Aug 27/2004	Figure 6	2	Aug 27/2004
	7	Aug 27/2004		3	Aug 27/2004
	8	Aug 27/2004		4	Aug 27/2004
	9	Aug 27/2004		5	Aug 27/2004
	10	Aug 27/2004		6	Aug 27/2004
	11	Aug 27/2004			
	12	Aug 27/2004			
	13	Aug 27/2004			
	14	Aug 27/2004			
72-00-00 Figure 3	1	Aug 27/2004			
	2	Aug 27/2004			
	3	Aug 27/2004			
	4	Aug 27/2004			
	5	Aug 27/2004			
	6	Aug 27/2004			
	7	Aug 27/2004			
	8	Aug 27/2004			
	9	Aug 27/2004			

PRATT & WHITNEY CANADA
ILLUSTRATED PARTS CATALOG
MANUAL PART NO. 3013244

TABLE OF CONTENTS

<u>TITLE</u>	<u>CH/SE/SU</u>	<u>FIGURE</u>
Container Assembly, Complete, Engine Shipping	72-00-00	2
Container Assembly, Engine Shipping, Reinforced	72-00-00	6
Container Assembly, Engine Shipping	72-00-00	5
Container Assembly, Shipping - Reusable Metal	72-00-00	3
Container Assembly, Shipping, Fiberboard	72-00-00	4
Engine Assembly, Complete	72-00-00	1

Engine Assembly, Complete

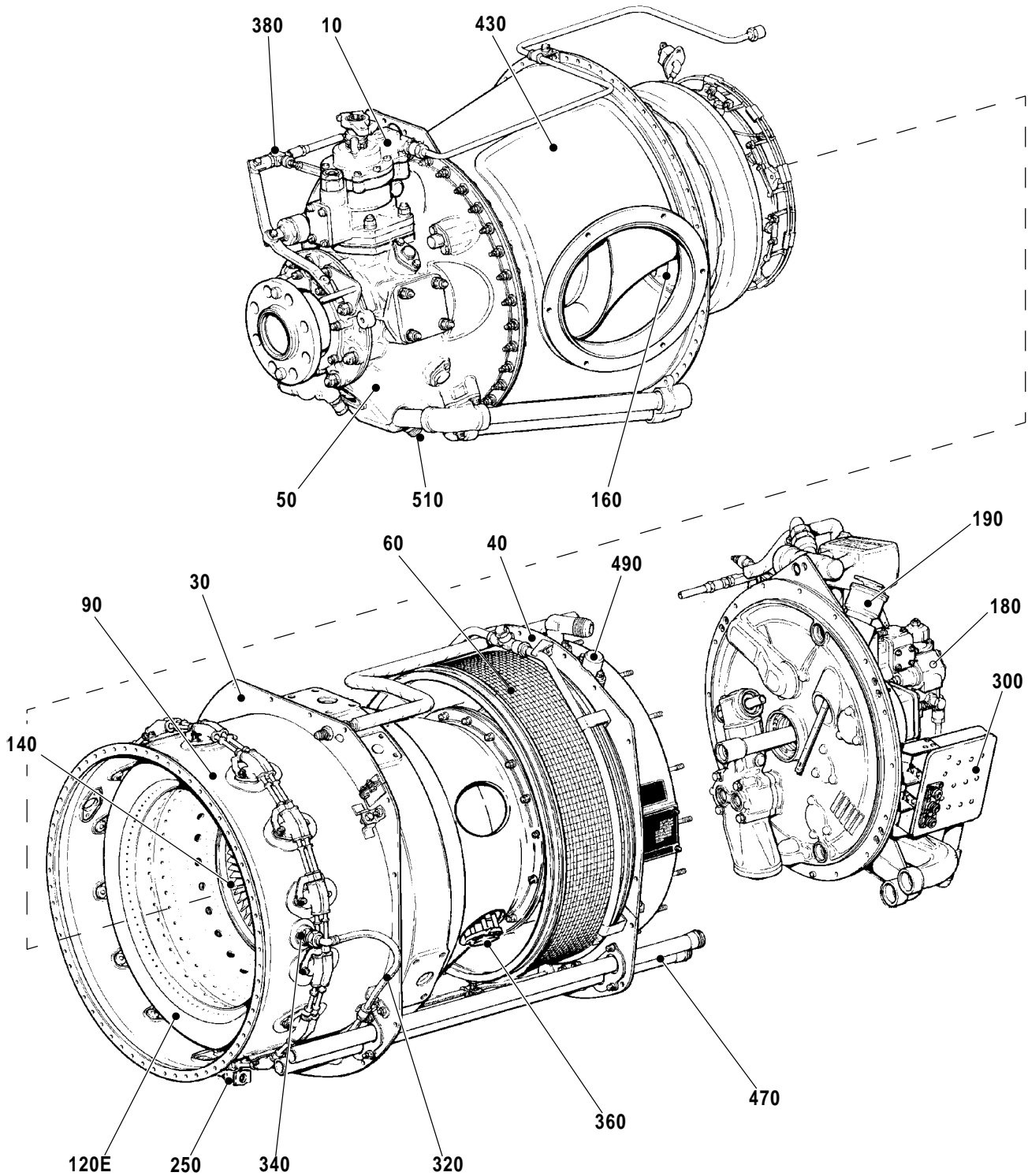
72-00-00

Figure 1

Page 1

Aug 27/2004

PRATT & WHITNEY CANADA
ILLUSTRATED PARTS CATALOG
MANUAL PART NO. 3013244



Engine Assembly, Complete
Figure 1 (Sheet 1 of 2)

C52014A

72-00-00

Figure 1

Page 2

Aug 27/2004

PRATT & WHITNEY CANADA
ILLUSTRATED PARTS CATALOG
MANUAL PART NO. 3013244

FIG. ITEM	PART NUMBER	AIRLINE PART NUMBER	1234567 NOMENCLATURE	EFFECT CODE	UNITS PER ASSY
1					
- 1	3015000		ENGINE ASSEMBLY, COMPLETE	A B	REF
- 1A	3027500		ENGINE ASSEMBLY, COMPLETE	C	REF
10			.PROPELLER GOVERNOR INSTALLATION SEE 61-20-00 FIG. 1	A B C	REF
20	DELETED				
30			.CENTER FIRESEAL GROUP SEE 72-30-01 FIG. 1	A B C	REF
40			.REAR FIRESEAL GROUP SEE 72-30-02 FIG. 1	A B C	REF
50	3013340		.GEARBOX ASSEMBLY, PROPELLER - EXTERNAL COMPONENTS (PT6A-27/- 28) SEE 72-10-00 FIG. 1	A B	REF
- 50A	3027480		.GEARBOX ASSEMBLY, PROPELLER - EXTERNAL COMPONENTS (PT6A-21) SEE 72-11-00 FIG. 1	C	REF
60			.AIR INLET SCREEN AND COMPRESSOR INLET FAIRING INSTALLATION SEE 72-20-00 FIG. 1	A B C	REF
70			.COMPRESSOR INLET CASE COMPONENTS GROUP SEE 72-20-00 FIG. 2	A B C	REF
80			.COMPRESSOR INLET CASE ASSEMBLY SEE 72-20-00 FIG. 3	A B C	REF
- 90			.GAS GENERATOR CASE INSTALLATION GROUP SEE 72-30-04 FIG. 1	A B C	REF
- 100			.POWER OUTPUT SECTION SEE 72-30-04 FIG. 1	A B C	REF
			ATTACHING PARTS		
110			.COMPRESSOR ROTOR INSTALLATION SEE 72-30-05 FIG. 1	A B C	REF
- 120	*****		.LINER ASSEMBLY, COMBUSTION CHAMBER SEE 72-40-01 FIG. 1	A B C	REF

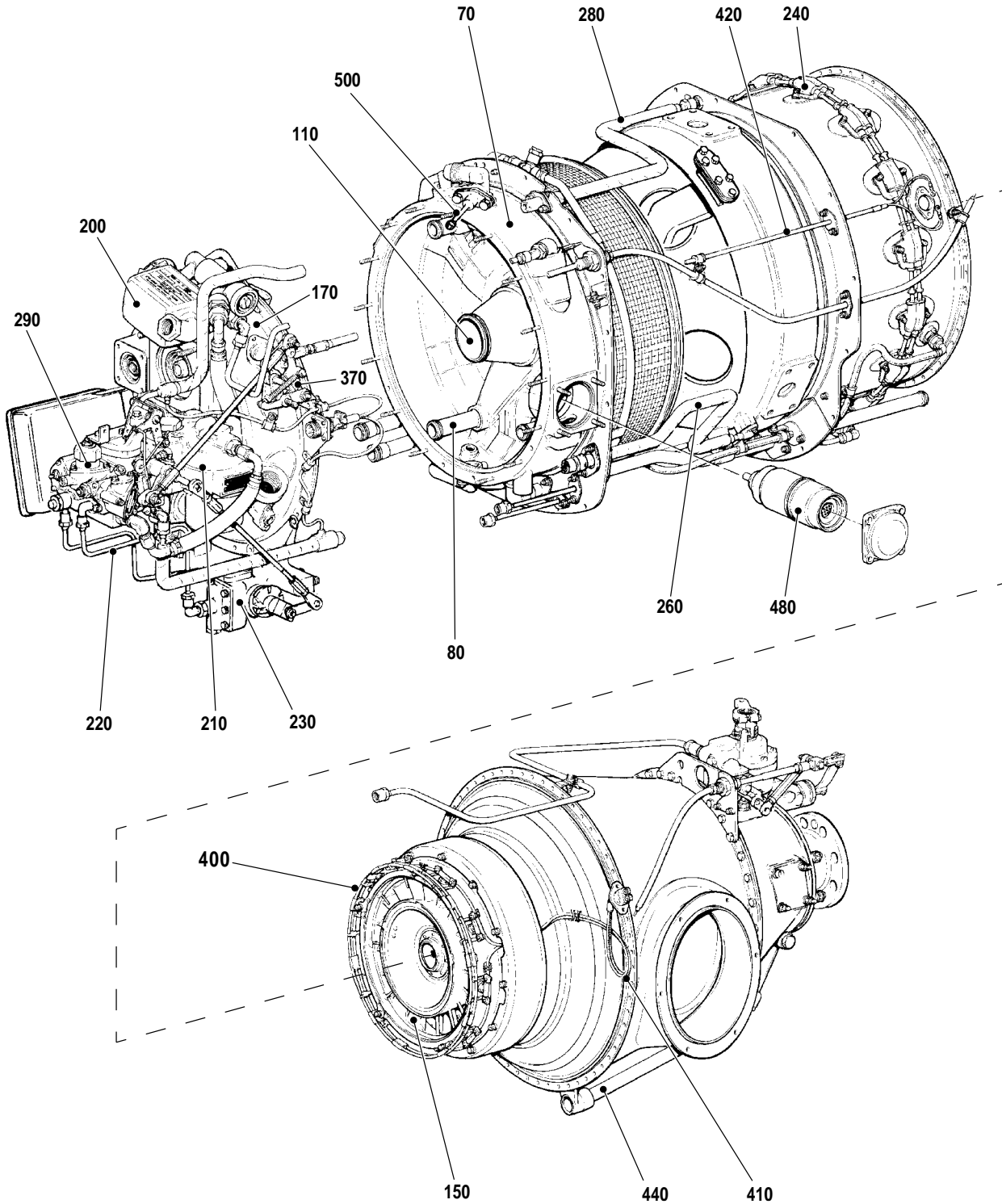
CONTINUED

- ITEM NOT ILLUSTRATED

EFF MODEL A PT6A-27 B PT6A-28 C PT6A-21	EFF MODEL	EFF MODEL
--	-----------	-----------

72-00-00
Figure 1
Page 3
Aug 27/2004

PRATT & WHITNEY CANADA
ILLUSTRATED PARTS CATALOG
MANUAL PART NO. 3013244



Engine Assembly, Complete
Figure 1 (Sheet 2 of 2)

C52015A

72-00-00

Figure 1

Page 4

Aug 27/2004

PRATT & WHITNEY CANADA
ILLUSTRATED PARTS CATALOG
MANUAL PART NO. 3013244

FIG. ITEM	PART NUMBER	AIRLINE PART NUMBER	1234567 NOMENCLATURE	EFFECT CODE	UNITS PER ASSY
1					
- 130			.COMPRESSOR TURBINE VANE RING AND DUCT GROUP SEE 72-50-01 FIG. 1	A B C	REF
140			.COMPRESSOR TURBINE INSTALLATION SEE 72-50-02 FIG. 1	A B C	REF
150			.POWER TURBINE INTERSTAGE INSTALLATION AND CONTAINMENT RING GROUP SEE 72-50-03 FIG. 1	A B C	REF
160			.POWER TURBINE INSTALLATION SEE 72-50-04 FIG. 1	A B C	REF
170	3011810		.GEARBOX ASSEMBLY, ACCESSORY, EXTERNAL COMPONENTS SEE 72-60-00 FIG. 1 THRU 6	A B C	REF
180			.ACCESSORY GEARBOX EXTERNALS GROUP SEE 72-60-00 FIG. 1	A B C	REF
190			.OIL FILLER CAP AND DIPSTICK ASSEMBLY INSTALLATION SEE 72-60-00 FIG. 10	A B C	REF
200			.OIL-TO-FUEL HEATER INSTALLATION GROUP SEE 73-10-01 FIG. 1	A B C	REF
210			.FUEL PUMP INSTALLATION GROUP SEE 73-10-02 FIG. 1	A B C	REF
220			.FUEL DELIVERY TUBES GROUP (PT6A-27/-28) SEE 73-10-03 FIG. 1	A B	REF
- 220A			.FUEL DELIVERY TUBES GROUP (PT6A-21/-27) SEE 73-10-03 FIG. 2	A C	REF
230			.STARTING CONTROL INSTALLATION (PT6A-27/-28) SEE 73-10-04 FIG. 1	A B	REF
- 230A			.FLOW DIVIDER AND DUMP VALVE INSTALLATION SEE 73-10-04 FIG. 2	A C	REF
240			.FUEL MANIFOLD INSTALLATION (PT6A-27/-28) SEE 73-10-05 FIG. 1	A B	REF

CONTINUED

- ITEM NOT ILLUSTRATED

EFF MODEL A PT6A-27 B PT6A-28 C PT6A-21	EFF MODEL	EFF MODEL
--	-----------	-----------

72-00-00

Figure 1

Page 5

Aug 27/2004

PRATT & WHITNEY CANADA
ILLUSTRATED PARTS CATALOG
MANUAL PART NO. 3013244

FIG. ITEM	PART NUMBER	AIRLINE PART NUMBER	NOMENCLATURE	EFFECT CODE	UNITS PER ASSY
1			1234567		
- 240A			. FUEL MANIFOLD INSTALLATION (PT6A-21/-27) SEE 73-10-05 FIG. 2	A C	REF
250			. FUEL DRAIN VALVES SEE 73-10-06 FIG. 1	A B C	REF
260			. PNEUMATIC LINES AND TEMPERATURE COMPENSATOR INSTALLATION, ENGINES WITH COMPENSATORS PRE-SB1123 SEE 73-10-07 FIG. 1	A B	REF
- 270			. PNEUMATIC LINES INSTALLATION, ENGINE WITHOUT TEMPERATURE COMPENSATOR POST-SB1123 SEE 73-10-07 FIG. 2	A B C	REF
- 270A			. PNEUMATIC LINES INSTALLATION, ENGINES WITHOUT TEMPERATURE COMPENSATOR (PT6A-28 PIPER INSTALLATION) POST-SB1290 SEE 73-10-07 FIG. 3	B	REF
- 270B			. PNEUMATIC LINES INSTALLATION, ENGINES WITHOUT TEMPERATURE COMPENSATOR (PT6A-27/-28) POST-SB1343 SEE 73-10-07 FIG. 4	A B	REF
- 270C			. COMPRESSOR DELIVERY AIR LINE WITH P3 AIR FILTER POST-SB1330 SEE 73-10-07 FIG. 5	A B C	REF
- 270D			. COMPRESSOR DELIVERY AIR LINE WITH P3 AIR FILTER (PT6A-27) POST-SB1378 SEE 73-10-07 FIG. 6	A	REF
- 270E			. COMPRESSOR DELIVERY AIR LINE WITH P3 AIR FILTER (PT6A-27/-28) SEE 73-10-07 FIG. 7	A B	REF
280			. GOVERNOR PNEUMATIC TUBES INSTALLATION SEE 73-10-08 FIG. 1	A B C	REF
290			. FUEL CONTROL UNIT INSTALLATION GROUP (PT6A-27/-28) SEE 73-20-00 FIG. 1	A B	REF
- 290A			. FUEL CONTROL UNIT INSTALLATION GROUP (PT6A-21) SEE 73-20-00 FIG. 2	C	REF

CONTINUED

- ITEM NOT ILLUSTRATED

EFF MODEL	EFF MODEL	EFF MODEL
A PT6A-27		
B PT6A-28		
C PT6A-21		

72-00-00

Figure 1

Page 6

Aug 27/2004

PRATT & WHITNEY CANADA
ILLUSTRATED PARTS CATALOG
MANUAL PART NO. 3013244

FIG. ITEM	PART NUMBER	AIRLINE PART NUMBER	NOMENCLATURE	EFFECT CODE	UNITS PER ASSY
1			1234567		
	300		.IGNITION CURRENT REGULATOR INSTALLATION PRE-SB1196 SEE 74-00-00 FIG. 1	A B C	REF
	- 310		.IGNITION EXCITER INSTALLATION POST-SB1196 SEE 74-00-00 FIG. 2	A B C	REF
	320		.IGNITION CABLES INSTALLATION, GLOW PLUG (PT6A-27/-28) SEE 74-10-00 FIG. 1	A B	REF
	- 320A		.IGNITION CABLES INSTALLATION, GLOW PLUG (PT6A-21) SEE 74-10-00 FIG. 2	C	REF
	- 330		.IGNITION CABLES INSTALLATION, IGNITER (PT6A-27/-28) POST-SB1196 SEE 74-20-00 FIG. 1	A B	REF
	- 330A		.IGNITION CABLES INSTALLATION, IGNITER (PT6A-21/-27) POST-SB1196 SEE 74-20-00 FIG. 2	A C	REF
	340		.GLOW PLUG INSTALLATION SEE 74-10-00 FIG. 3	A B C	REF
	- 350		.IGNITER INSTALLATION POST-SB1196 SEE 74-20-00 FIG. 3	A B C	REF
	360		.COMPRESSOR BLEED VALVE INSTALLATION SEE 75-30-00 FIG. 1	A B C	REF
	370		.PROPELLER REVERSING INTERCONNECT LINKAGE GROUP, REAR SEE 76-10-00 FIG. 1	A B C	REF
	380		.PROPELLER REVERSING INTERCONNECT LINKAGE GROUP, FRONT SEE 76-10-00 FIG. 2	A B C	REF
	- 390		.PROPELLER REVERSING INTERCONNECT LINKAGE GROUP, FRONT, ALTERNATE FORCE LINK ARRANGEMENT SEE 76-10-00 FIG. 3	A B	REF
	400		.T5 THERMOCOUPLE AND BUS-BAR INSTALLATION SEE 77-20-00 FIG. 1	A B C	REF

CONTINUED

- ITEM NOT ILLUSTRATED

EFF MODEL A PT6A-27 B PT6A-28 C PT6A-21	EFF MODEL	EFF MODEL
--	-----------	-----------

72-00-00

Figure 1

Page 7

Aug 27/2004

PRATT & WHITNEY CANADA
ILLUSTRATED PARTS CATALOG
MANUAL PART NO. 3013244

FIG. ITEM	PART NUMBER	AIRLINE PART NUMBER	NOMENCLATURE	EFFECT CODE	UNITS PER ASSY
1			1234567		
410			.T5 WIRING HARNESS INSTALLATION SEE 77-20-00 FIG. 2	A B C	REF
420			.T5 TRIM WIRING HARNESS INSTALLATION SEE 77-20-00 FIG. 3	A B C	REF
430			.EXHAUST DUCT AND INSULATION BLANKET GROUP SEE 72-50-05 FIG. 1	A B C	REF
440			.PRESSURE OIL TUBES GROUP SEE 79-20-01 FIG. 1	A B C	REF
- 450			.PRESSURE OIL ELBOW INSTALLATION SEE 79-20-01 FIG. 1	A B C	REF
- 460			.NO.2 BEARING SCAVENGE OIL TUBE GROUP SEE 79-20-01 FIG. 2	A B C	REF
470			.DUAL SCAVENGE OIL TUBES AND FLEXIBLE TUBE TO COOLER SEE 79-20-01 FIG. 3	A B C	REF
480			.OIL FILTER COMPONENTS GROUP SEE 79-20-02 FIG. 1	A B C	REF
- 480A			.OIL FILTER COMPONENTS GROUP, ALTERNATE CONFIGURATION SEE 79-20-02 FIG. 2	A B C	REF
490			.PRESSURE RELIEF VALVE SEE 72-60-00 FIG. 9	A B C	REF
500			.OIL-TO-FUEL HEATER CHECK VALVE GROUP SEE 79-20-03 FIG. 1	A B C	REF
510			.CHIP DETECTOR INSTALLATION (PT6A-27/-28) SEE 72-10-00 FIG. 7	A B	REF
- 510A			.CHIP DETECTOR INSTALLATION (PT6A-21) SEE 72-11-00 FIG. 7	C	REF
			-----*-----		
CONTINUED					

- ITEM NOT ILLUSTRATED

EFF MODEL	EFF MODEL	EFF MODEL
A PT6A-27		
B PT6A-28		
C PT6A-21		

72-00-00
Figure 1
Page 8
Aug 27/2004

PRATT & WHITNEY CANADA
ILLUSTRATED PARTS CATALOG
MANUAL PART NO. 3013244

FIG. ITEM	PART NUMBER	AIRLINE PART NUMBER	NOMENCLATURE	EFFECT CODE	UNITS PER ASSY
1			1234567		
			KITS, REPAIR/SERVICE PARTS		
- 520	3014698		PARTS KIT, HOT SECTION INSPECTION, (STANDARD REPLACEABLE PARTS) INTRCHG WITH P/N 3030047	A B C	AR
- 520A	3030047		PARTS KIT, HOT SECTION INSPECTION, (STANDARD REPLACEABLE PARTS) INTRCHG WITH P/N 3031407	A B C	AR
- 520B	3031407		PARTS KIT, HOT SECTION INSPECTION, (STANDARD REPLACEABLE PARTS) SEE 77-20-00 FIG. 2 PRE-SB1489 TWO-WAY INTRCHG WITH P/N 3040093	A B C	AR
- 520C	3040093		PARTS KIT, HOT SECTION INSPECTION, (STANDARD REPLACEABLE PARTS) SEE 77-20-00 FIG. 2 POST-SB1489 PRE-SB1488 TWO-WAY INTRCHG WITH P/N 3041153	A B C	AR
- 520D	3041153		PARTS KIT, HOT SECTION INSPECTION SEE 77-20-00 FIG. 2 POST-SB1488	A B C	AR
530	DELETED				
540	DELETED				
550	DELETED				
- 560	3023073		PARTS KIT, FILTER AIR, COMPRESSOR DELIVERY, (3 MICRON ABSOLUTE) POST-SB1205	A B C	AR
- 560A	3024906		PARTS KIT, COMPRESSOR AIR FILTER REPLACEMENT SEE 73-10-07 FIG. 6 INTRCHG WITH P/N 3028879	A B	AR
- 560B	3028879		PARTS KIT, COMPRESSOR AIR FILTER REPLACEMENT, (REUSABLE ELEMENT P/N 3029267 OR 3028856) SEE 73-10-07 FIG. 6 POST-SB1330	A	AR
CONTINUED					

- ITEM NOT ILLUSTRATED

EFF MODEL A PT6A-27 B PT6A-28 C PT6A-21	EFF MODEL	EFF MODEL
--	-----------	-----------

72-00-00
Figure 1
Page 9
Aug 27/2004

PRATT & WHITNEY CANADA
ILLUSTRATED PARTS CATALOG
MANUAL PART NO. 3013244

FIG. ITEM	PART NUMBER	AIRLINE PART NUMBER	NOMENCLATURE	EFFECT CODE	UNITS PER ASSY
1			1234567		
- 570	3023794		PARTS KIT, FILTER INSPECTION, FUEL PUMP SEE 73-10-02 FIG. 1 INTRCHG WITH P/N 3033356	A B C	AR
- 570A	3033356		PARTS KIT, FILTER, FUEL PUMP SEE 73-10-02 FIG. 1	A B C	AR
- 580	3023795		PARTS KIT, FILTER REPLACEMENT, FUEL PUMP SEE 73-10-02 FIG. 1 INTRCHG WITH P/N 3033355	A B C	AR
- 580A	3033355		FILTER ELEMENT, FUEL PUMP SEE 73-10-02 FIG. 1 PRE-PT6A SPB NO.113 TWO-WAY INTRCHG WITH P/N 3070220-01	A B C	AR
- 580B	3070220-01		FILTER ELEMENT, FUEL PUMP SEE 73-10-02 FIG. 1 POST-PT6A SPB NO.113	A B C	AR
590	DELETED				
- 600	3033279		MODIFICATION KIT, P3 AIR FILTER SEE 73-10-07 FIG. 6 POST-SB1378	A	AR
610	DELETED				
- 620	3034740		PARTS KIT, WASHER REPLACEMENT, IGNITION CABLE, (CONTAINS REUSABLE VENDOR WASHER P/N 10-395423)	A B C	AR
- 630	3035372		MODIFICATION KIT, FUEL FLOW DIVIDER SEE 73-10-04 FIG. 2	C	AR

- ITEM NOT ILLUSTRATED

EFF MODEL	EFF MODEL	EFF MODEL
A PT6A-27		
B PT6A-28		
C PT6A-21		

72-00-00
Figure 1
Page 10
Aug 27/2004

Container Assembly, Complete, Engine Shipping

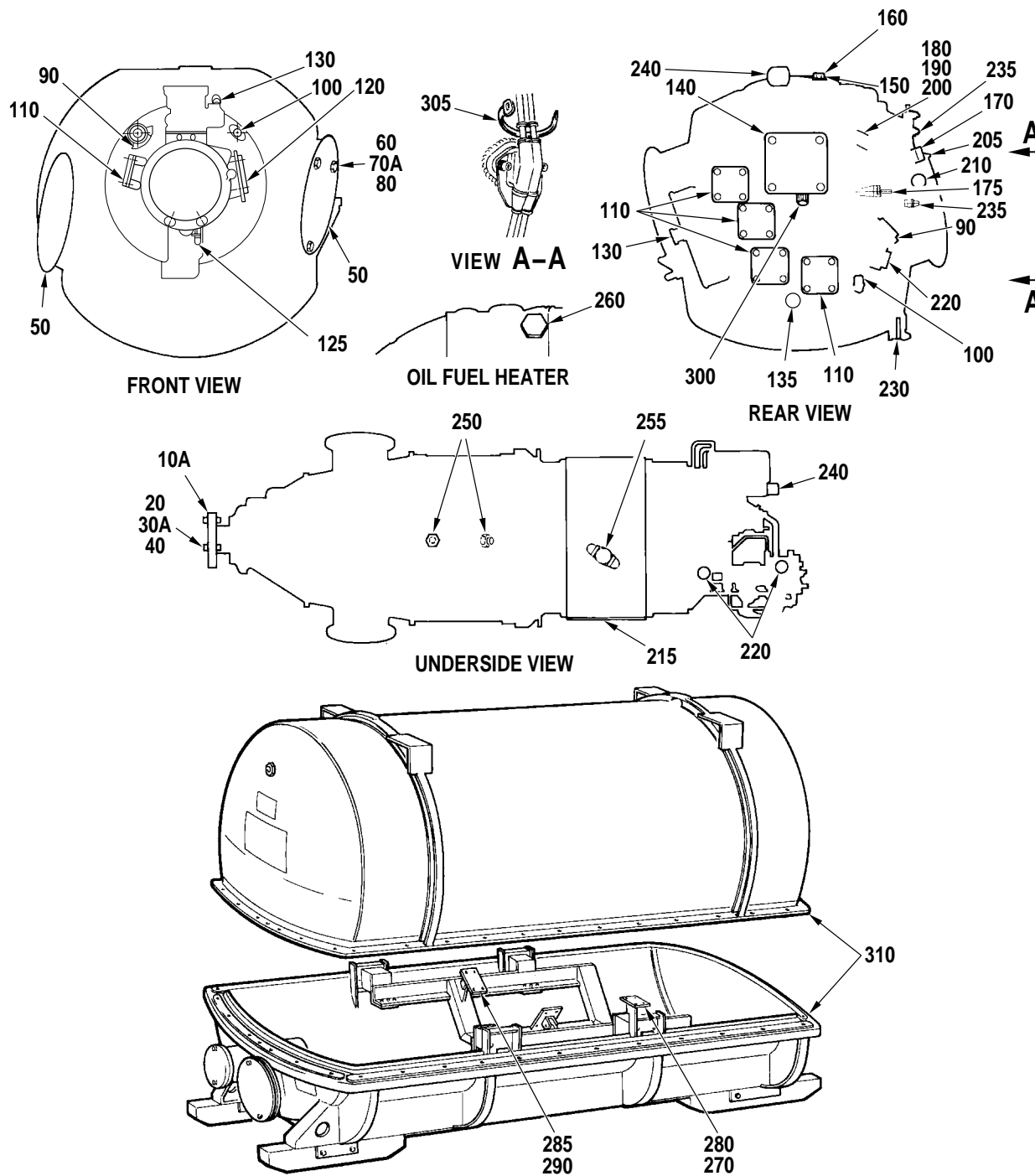
72-00-00

Figure 2

Page 1

Aug 27/2004

PRATT & WHITNEY CANADA
ILLUSTRATED PARTS CATALOG
MANUAL PART NO. 3013244



Container Assembly, Complete, Engine Shipping
 Figure 2

PRATT & WHITNEY CANADA
ILLUSTRATED PARTS CATALOG
MANUAL PART NO. 3013244

FIG. ITEM	PART NUMBER	AIRLINE PART NUMBER	NOMENCLATURE	EFFECT CODE	UNITS PER ASSY
2			1234567		
- 1	3013675		CONTAINER ASSEMBLY, COMPLETE, ENGINE SHIPPING	A B C	REF
- 1A	3034687		CONTAINER ASSEMBLY COMPLETE, ENGINE SHIPPING	B	REF
- 10	PK257		.COVER, SHIPPING, PROPELLER SHAFT INTRCHG WITH P/N PK1761	A B C	1
10A	PK1761		.COVER, SHIPPING, PROPELLER SHAFT INTRCHG WITH P/N PK1841	A B C	1
- 10B	PK1841		.COVER, SHIPPING, PROPELLER SHAFT	A B C	1
20	AN101515		.BOLT, MACHINE, HEX SEE NOTE 1	A B C	3
- 30	AN122586		.WASHER, FLAT SEE NOTE 1	A B C	6
30A	MS9320-14		.WASHER, FLAT SEE NOTE 1	A B C	6
40	AN150412		.NUT, PLAIN, HEX SEE NOTE 1	A B C	3
50	PK662		.COVER, SHIPPING, EXHAUST DUCT INTRCHG WITH P/N PK1843	A B C	2
- 50A	PK1843		.COVER, SHIPPING, EXHAUST DUCT	A B C	2
60	AN101110		.BOLT, MACHINE, HEX INTRCHG WITH P/N MS9519-10	A B C	6
- 60A	MS9519-10		.BOLT, MACHINE, HEX SEE NOTE 2	A B C	6
- 70	AN122582		.WASHER, FLAT SEE NOTE 2	A B C	6
70A	MS9320-10		.WASHER, FLAT SEE NOTE 2	A B C	6

CONTINUED

- ITEM NOT ILLUSTRATED

EFF MODEL A PT6A-27 B PT6A-28 C PT6A-21	EFF MODEL	EFF MODEL
--	-----------	-----------

72-00-00
Figure 2
Page 3
Aug 27/2004

PRATT & WHITNEY CANADA
ILLUSTRATED PARTS CATALOG
MANUAL PART NO. 3013244

FIG. ITEM	PART NUMBER	AIRLINE PART NUMBER	NOMENCLATURE	EFFECT CODE	UNITS PER ASSY
2			1234567		
80	AN121502		.NUT, PLAIN, HEX INTRCHG WITH P/N MS9881-10 SEE NOTE 2	A B C	6
- 80A	MS9881-10		.NUT, PLAIN, HEX SEE NOTE 2	A B C	6
90	PK241		.PLUG, SHIPPING, OIL PRESSURE BOSS FOR ENGINES BUILT TO BS610 PRE-PT6A SPB NO.49 PRE-PT6A SPB NO.52 TWO-WAY INTRCHG WITH P/N PK3198 TWO-WAY INTRCHG WITH P/N PK3282	A B C	2
- 90A	PK3198		.PLUG, SHIPPING, OIL PRESSURE BOSS FOR ENGINES BUILT TO BS307, BS321, BS324, BS325, BS330, BS362, BS367, BS374, BS392, BS393, BS410, BS414, BS423, BS954 POST-PT6A SPB NO.49 PRE-PT6A SPB NO.52 TWO-WAY INTRCHG WITH P/N PK3282	A B C	2
- 90B	PK3282		.PLUG, SHIPPING, OIL PRESSURE BOSS FOR ENGINES BUILT TO BS307, BS321, BS324, BS325, BS330, BS362, BS367, BS374, BS392, BS393, BS410, BS414, BS423, BS954 POST-PT6A SPB NO.52	A B C	2
100	PK422		.CAP, SHIPPING PRE-PT6A SPB NO.81 TWO-WAY INTRCHG WITH P/N PK3640	A B C	2
- 100A	PK3640		.CAP, SHIPPING POST-PT6A SPB NO.81	A B C	2
110	PK255		.COVER, SHIPPING, TACHOMETER AND ACCESSORIES DRIVES (USE UP TO FIVE MAX UNITS ACCORDING TO CONFIGURATION OF ENGINE AND QUANTITY OF OPTIONAL DRIVES INSTALLED. FLIGHT COVER P/N AN100043 MAY BE USED IN LIEU)	A B C	5
120	PK269		.COVER, SHIPPING, OVERSPEED GOVERNOR DRIVE	A B C	1

CONTINUED

- ITEM NOT ILLUSTRATED

EFF MODEL	EFF MODEL	EFF MODEL
A PT6A-27		
B PT6A-28		
C PT6A-21		

72-00-00
Figure 2
Page 4
Aug 27/2004

PRATT & WHITNEY CANADA
ILLUSTRATED PARTS CATALOG
MANUAL PART NO. 3013244

FIG. ITEM	PART NUMBER	AIRLINE PART NUMBER	NOMENCLATURE	EFFECT CODE	UNITS PER ASSY
2			1234567		
125	PK3640		.CAP, SHIPPING, NIPPLE TUBE FOR ENGINES BUILT TO BS788 POST-SB1618	C	1
130	PK247		.CAP, SHIPPING, ELECTRICAL CONNECTOR FOR ENGINES BUILT TO BS307, BS321, BS324, BS325, BS330, BS362, BS367, BS374, BS392, BS393, BS410, BS414, BS423, BS954 PRE-SB1613 INTRCHG WITH P/N MS90376-10Y RESTRICTED INTERCHANGEABILITY WITH P/N PK3654-06. REFER TO APPLICABLE SERVICE BULLETIN.	A B C	2
- 130A	MS90376-10Y		.CAP, SHIPPING, ELECTRICAL CONNECTOR SEE NOTE 3	A B C	NP
- 130B	PK3654-06		.CAP, SHIPPING, ELECTRICAL CONNECTOR FOR ENGINES BUILT TO BS307, BS321, BS324, BS325, BS330, BS362, BS367, BS374, BS392, BS393, BS410, BS414, BS423, BS954 POST-SB1613	A B C	2
135	PK265		.CAP, SHIPPING, ELECTRICAL CONNECTOR PRE-SB1613 INTRCHG WITH P/N MS90376-12Y RESTRICTED INTERCHANGEABILITY WITH P/N PK3654-07. REFER TO APPLICABLE SERVICE BULLETIN. SEE NOTE 4	A B C	1
- 135A	MS90376-12Y		.CAP, DUST, ELECTRICAL CONNECTOR SEE NOTE 4 AND 3	A B C	NP
- 135B	PK3654-07		.CAP, SHIPPING, ELECTRICAL CONNECTOR POST-SB1613 SEE NOTE 4	A B C	1
140	PK251		.COVER, SHIPPING, STARTER GENERATOR MOUNT	A B C	1
150	PK425		.COVER, SHIPPING, CENTER ENGINE MOUNT	A B C	3

CONTINUED

- ITEM NOT ILLUSTRATED

EFF MODEL A PT6A-27 B PT6A-28 C PT6A-21	EFF MODEL	EFF MODEL
--	-----------	-----------

72-00-00

Figure 2

Page 5

Aug 27/2004

PRATT & WHITNEY CANADA
ILLUSTRATED PARTS CATALOG
MANUAL PART NO. 3013244

FIG. ITEM	PART NUMBER	AIRLINE PART NUMBER	NOMENCLATURE	EFFECT CODE	UNITS PER ASSY
2			1234567		
160	AN103106		.BOLT, MACHINE, HEX INTRCHG WITH P/N MS9532-04	A B C	12
- 160A	MS9532-04		.BOLT, MACHINE, DRD, HEX	A B C	12
170	PK415		.CAP, SHIPPING, THERMOCOUPLE CONNECTOR	A B C	1
175	PK654		.CAP, PROTECTIVE, DUST AND MOISTURE SEAL PRE-SB1613 RESTRICTED INTERCHANGEABILITY WITH P/N PK3654-30. REFER TO APPLICABLE SERVICE BULLETIN. SEE NOTE 5	A	1
- 175A	PK3654-30		.CAP, PROTECTIVE, DUST AND MOISTURE SEAL POST-SB1613 SEE NOTE 5	A	1
180	PK242		.COVER, SHIPPING, OIL VENT	A B C	1
190	AN101008		ATTACHING PARTS .BOLT, MACHINE, HEX INTRCHG WITH P/N MS9518-06	A B C	2
- 190A	MS9518-06		.BOLT, MACHINE, HEX	A B C	2
200	3003988		.WASHER, PLAIN	A B C	2
205	PK802		-----*----- .CAP, PROTECTIVE, DUST AND MOISTER SEAL PRE-SB1613 RESTRICTED INTERCHANGEABILITY WITH P/N PK3654-32. REFER TO APPLICABLE SERVICE BULLETIN.	A B C	1
- 205A	PK3654-32		.CAP, PROTECTIVE, DUST AND MOISTER SEAL POST-SB1613	A B C	1

CONTINUED

- ITEM NOT ILLUSTRATED

EFF MODEL A PT6A-27 B PT6A-28 C PT6A-21	EFF MODEL	EFF MODEL
--	-----------	-----------

72-00-00
Figure 2
Page 6
Aug 27/2004

PRATT & WHITNEY CANADA
ILLUSTRATED PARTS CATALOG
MANUAL PART NO. 3013244

FIG. ITEM	PART NUMBER	AIRLINE PART NUMBER	NOMENCLATURE	EFFECT CODE	UNITS PER ASSY
2			1234567		
210	PK263		.CAP, SHIPPING, ELECTRICAL CONNECTOR PRE-SB1613 INTRCHG WITH P/N MS90376-14Y RESTRICTED INTERCHANGEABILITY WITH P/N PK3654-08. REFER TO APPLICABLE SERVICE BULLETIN.	A B C	1
- 210A	MS90376-14Y		.CAP, SHIPPING, ELECTRICAL CONNECTOR SEE NOTE 3	A B C	NP
- 210B	PK3654-08		.CAP, SHIPPING, ELECTRICAL CONNECTOR POST-SB1613	A B C	1
215	PK1861		.COVER, SHIPPING, AIR INLET FOR ENGINES BUILT TO BS307, BS321, BS324, BS325, BS330, BS362, BS367, BS374, BS392, BS393, BS410, BS414, BS423, BS954 PRE-PT6A SPB NO.42 TWO-WAY INTRCHG WITH P/N PK3199	A B C	1
- 215A	PK3199		.COVER, SHIPPING, AIR INLET POST-PT6A SPB NO.42	A B C	1
- 215B	PK1857		.COVER, SHIPPING, AIR INLET FOR ENGINES BUILT TO BS622, BS624, BS877 SEE NOTE 6	A B C	1
220	PK245		.PLUG, SHIPPING 0.4375-20 THD	A B C	3
- 225	PK975		.CAP, PROTECTIVE, DUST AND MOISTURE SEAL SEE NOTE 7	B	2
230	PK781		.PLATE, SHIPPING, STARTING CONTROL TELESCOPIC ROD FOR ENGINES BUILT TO BS459, BS486, BS571, BS671, BS1141	A B C	1
235	PK177		.CAP, SHIPPING FOR ENGINES BUILT TO BS307, BS321, BS324, BS325, BS330, BS362, BS367, BS374, BS392, BS393, BS410, BS414, BS423, BS954 PRE-PT6A SPB NO.40 INTRCHG WITH P/N PK2239	A B C	1

CONTINUED

- ITEM NOT ILLUSTRATED

EFF MODEL A PT6A-27 B PT6A-28 C PT6A-21	EFF MODEL	EFF MODEL
--	-----------	-----------

72-00-00

Figure 2

Page 7

Aug 27/2004

PRATT & WHITNEY CANADA
ILLUSTRATED PARTS CATALOG
MANUAL PART NO. 3013244

FIG. ITEM	PART NUMBER	AIRLINE PART NUMBER	NOMENCLATURE	EFFECT CODE	UNITS PER ASSY
			1234567		
2					
- 235A	PK2239		.COVER, SHIPPING, INPUT DRIVE POST-PT6A SPB NO.40 PRE-PT6A SPB NO.62 TWO-WAY INTRCHG WITH P/N PK2799	A B C	1
- 235B	PK2799		.CAP, PLUG, TAPERED POST-PT6A SPB NO.62 PRE-SB1613 RESTRICTED INTERCHANGEABILITY WITH P/N PK3655-08. REFER TO APPLICABLE SERVICE BULLETIN. SEE NOTE 8	A B C	2
- 235C	PK3655-08		.CAP, PLUG, TAPERED POST-SB1613 SEE NOTE 8	A B C	2
240	PK267		.CAP, SHIPPING, OIL TEE AND HEATER PRE-PT6A SPB NO.81 TWO-WAY INTRCHG WITH P/N PK3611	A B C	2
- 240A	PK3611		.CAP, SHIPPING POST-PT6A SPB NO.81	A B C	2
250	PK246		.CAP, SHIPPING, CASE DRAINS PRE-PT6A SPB NO.81 TWO-WAY INTRCHG WITH P/N PK3608	A B C	2
- 250A	PK3608		.CAP, SHIPPING POST-PT6A SPB NO.81	A B C	2
255	PK3655-19		.PLUG, PROTECTIVE, TAPERED FOR ENGINES BUILT TO BS788	C	1
260	PK264		.PLUG, SHIPPING, FUEL HEATER	A B C	1
270	AN101110		.BOLT, MACHINE, HEX INTRCHG WITH P/N MS9519-10	A B C	3
- 270A	MS9519-10		.BOLT, MACHINE, HEX	A B C	3
280	PK693		.WASHER, LOCK, REAR STEADY INTRCHG WITH P/N MS35338-44	A B C	3
- 280A	MS35338-44		.WASHER, LOCK, REAR STEADY	A B C	3

CONTINUED

- ITEM NOT ILLUSTRATED

EFF MODEL	EFF MODEL	EFF MODEL
A PT6A-27		
B PT6A-28		
C PT6A-21		

72-00-00
Figure 2
Page 8
Aug 27/2004

PRATT & WHITNEY CANADA
ILLUSTRATED PARTS CATALOG
MANUAL PART NO. 3013244

FIG. ITEM	PART NUMBER	AIRLINE PART NUMBER	NOMENCLATURE	EFFECT CODE	UNITS PER ASSY
2			1234567		
285	AN103106		.BOLT, MACHINE, HEX INTRCHG WITH P/N MS9532-04	A B C	8
- 285A	MS9532-04		.BOLT, MACHINE, DRD, HEX	A B C	8
- 286	MS9521-04		.BOLT, MACHINE, DRD, HEX FOR ENGINES BUILT TO BS610 (ENGINE MOUNT) USE WITH P/N PK2122	B	12
290	PK381		.WASHER, LOCK, CENTER ENGINE MOUNT INTRCHG WITH P/N MS35338-46	A B C	8
- 290A	MS35338-46		.WASHER, LOCK (QUANTITY OF 12 FOR USE WITH CONTAINER ASSEMBLY P/N PK2122)	A B C	8
300	PK1301		.CAP, PROTECTION, DUST SEAL (CAP ASSEMBLY MS9314-03 MAY BE USED IN LIEU)	A B C	1
305	MS3367-1-4		.STRAP, TIE DOWN, ADJUSTABLE	A B C	1
310	PK329		.CONTAINER ASSEMBLY, SHIPPING REUSABLE METAL FOR ENGINES BUILT TO BS307, BS321, BS324, BS325, BS330, BS362, BS367, BS374, BS392, BS393, BS410, BS414, BS423, BS954 (ALTERNATE TO P/N PK562 OR PK1325. FOR LONG TERM STORAGE AND FOR INTERCONTINENTAL SHIPMENT VIA SEA TRANSPORT) SEE FIG. 3 FOR BREAKDOWN SEE NOTE 9 PRE-PT6A SPB NO. 47 PRE-SB1614 RESTRICTED INTERCHANGEABILITY WITH P/N PK926. REFER TO APPLICABLE SERVICE BULLETIN. TWO-WAY INTRCHG WITH P/N PK3798	A B C	1
- 310A	PK926		.CONTAINER ASSEMBLY SHIPPING, REUSABLE METAL SEE FIG. 3 FOR BREAKDOWN SEE NOTE 9 POST-PT6A SPB NO.47 PRE-SB1614 TWO-WAY INTRCHG WITH P/N PK3798	A B C	1

CONTINUED

- ITEM NOT ILLUSTRATED

EFF MODEL A PT6A-27 B PT6A-28 C PT6A-21	EFF MODEL	EFF MODEL
--	-----------	-----------

72-00-00

Figure 2

Page 9

Aug 27/2004

PRATT & WHITNEY CANADA
ILLUSTRATED PARTS CATALOG
MANUAL PART NO. 3013244

FIG. ITEM	PART NUMBER	AIRLINE PART NUMBER	NOMENCLATURE	EFFECT CODE	UNITS PER ASSY
			1234567		
2					
- 310B	PK3798		. CONTAINER ASSEMBLY SHIPPING, REUSABLE METAL SEE FIG. 3 FOR BREAKDOWN SEE NOTE 9 POST-SB1614	A B C	1
- 320	PK562		. CONTAINER ASSEMBLY, SHIPPING, FIBERBOARD AND WOOD SEE FIG. 4 FOR BREAKDOWN (ALTERNATE TO P/N PK329. LIMITED STACKING CAPABILITY. FOR SHORT TERM STORAGE, INTERNATIONAL SHIPMENT AND MAY BE USED FOR INTERCONTINENTAL SHIPMENT VIA AIR FREIGHT) INTRCHG WITH P/N PK1325	A B	1
- 320A	PK1325		. CONTAINER ASSEMBLY, ENGINE SHIPPING FOR ENGINES BUILT TO BS307, BS321, BS324, BS325, BS330, BS362, BS367, BS374, BS392, BS393, BS410, BS414, BS423, BS954 SEE FIG. 5 FOR BREAKDOWN (ALTERNATE TO P/N PK329. LIMITED STACKING CAPABILITY, FOR SHORT TERM STORAGE, INTERNATIONAL SHIPMENT AND MAY BE USED FOR INTERCONTINENTAL SHIPMENT VIA AIR FREIGHT) POST-PT6A SPB NO.18 TWO-WAY INTRCHG WITH P/N PK2743	A B C	1
- 320B	PK2743		. CONTAINER ASSEMBLY, ENGINE SHIPPING SEE FIG. 5 FOR BREAKDOWN POST-PT6A SPB NO.18 PRE-SB1614 TWO-WAY INTRCHG WITH P/N PK3809	A B C	1
- 320C	PK2122		. CONTAINER ASSEMBLY, ENGINE SHIPPING, REINFORCED FOR ENGINES BUILT TO BS610 SEE FIG. 6 FOR BREAKDOWN TWO-WAY INTRCHG WITH P/N PK2729	B	1
- 320D	PK2729		. CONTAINER ASSEMBLY, ENGINE SHIPPING FOR ENGINES BUILT TO BS610 SEE FIG. 6 FOR BREAKDOWN POST-PT6A SPB NO.18 PRE-SB1614 TWO-WAY INTRCHG WITH P/N PK3807	A B C	1
CONTINUED					

- ITEM NOT ILLUSTRATED

EFF MODEL	EFF MODEL	EFF MODEL
A PT6A-27		
B PT6A-28		
C PT6A-21		

72-00-00

Figure 2

Page 10

Aug 27/2004

PRATT & WHITNEY CANADA
ILLUSTRATED PARTS CATALOG
MANUAL PART NO. 3013244

FIG. ITEM	PART NUMBER	AIRLINE PART NUMBER	NOMENCLATURE	EFFECT CODE	UNITS PER ASSY
2			1234567		
- 320E	PK3807		.CONTAINER ASSEMBLY, ENGINE SHIPPING FOR ENGINES BUILT TO BS610 SEE FIG. 6 FOR BREAKDOWN MAY BE OBTAINED BY REWORK OF P/N PK2729 POST-SB1614	B	1
- 320F	PK3809		.CONTAINER ASSEMBLY, ENGINE SHIPPING SEE FIG. 5 FOR BREAKDOWN MAY BE OBTAINED BY REWORK OF P/N PK2743 POST-SB1614	A B C	1
- 330	PK122		.ENVELOPE, LOG BOOK FOR ENGINES BUILT TO BS307, BS321, BS324, BS325, BS330, BS362, BS367, BS374, BS392, BS393, BS410, BS414, BS423, BS954 REPLACED BY PN ST3582-01 PRE-PT6A SPB NO.51	A B C	1
- 340	PK221		.ENVELOPE, ENGINE SHIPPING DATA FOR ENGINES BUILT TO BS307, BS321, BS324, BS325, BS330, BS362, BS367, BS374, BS392, BS393, BS410, BS414, BS423, BS954 REPLACED BY PN ST3582-01 PRE-PT6A SPB NO.51	A B C	3
- 350	PK256		.COVER, SHIPPING, PROPELLER GOVERNOR PAD FOR ENGINES BUILT TO BS307, BS321, BS324, BS325, BS330, BS362, BS367, BS374, BS392, BS393, BS410, BS414, BS423, BS954 (ENGINE LESS GOVERNOR ONLY)	A B C	1
- 360	PK388		.TAPE, ADHESIVE, PRESSURE SENSITIVE, FILAMENT REINFORCED 2.00 WIDE, 50 FOOT ROLL SEE NOTE 10	A B C	AR
- 370	PK423		.DESICCANT, BAGGED, 8 UNIT (ONE UNIT EQUALS ONE OUNCE)	A B C	12

CONTINUED

- ITEM NOT ILLUSTRATED

EFF MODEL A PT6A-27 B PT6A-28 C PT6A-21	EFF MODEL	EFF MODEL
--	-----------	-----------

72-00-00

Figure 2

Page 11

Aug 27/2004

PRATT & WHITNEY CANADA
ILLUSTRATED PARTS CATALOG
MANUAL PART NO. 3013244

FIG. ITEM	PART NUMBER	AIRLINE PART NUMBER	NOMENCLATURE	EFFECT CODE	UNITS PER ASSY
2			1234567		
- 380	PK577		.BOX, FOLDING FOR ENGINES BUILT TO BS307, BS321, BS324, BS325, BS330, BS362, BS367, BS374, BS392, BS393, BS410, BS414, BS423, BS954 11.750 X 11.750 X 1.750 REPLACED BY P/N PK1212 PRE-PT6A SPB NO.51	A B C	1
- 380A	PK1212		.FOLDER, ONE PIECE 12.000 X 12.000 X 2.000 POST-PT6A SPB NO.51	A B C	1
- 390	PK606		.ENVELOPE, PACKING INSTRUCTION USE WITH P/N PK562 AND PK1325	A B C	1
- 400	3008888		.INSTRUCTIONS, SHIPPING CONTAINER USE WITH P/N PK329	A B C	1
- 410	3010488		.INSTRUCTIONS, SHIPPING CONTAINER USE WITH P/N PK562	A B C	1
- 420	3018866		.INSTRUCTIONS, SHIPPING CONTAINER USE WITH P/N PK1325	A B C	1
- 425	3027689		.INSTRUCTIONS, SHIPPING CONTAINER FOR ENGINES BUILT TO BS610 USE WITH P/N PK2122	B	1
- 430	3012167		.LOG BOOK, ENGINE	A B C	1
- 435	3032284		.HISTORY RECORD, COMPRESSOR TURBINE DISK FOR ENGINES BUILT TO BS307, BS321, BS324, BS325, BS330, BS362, BS367, BS374, BS392, BS393, BS410, BS414, BS423, BS954 REPLACED BY PN ST3582-01	A B C	1
- 436	3032285		.LOG SHEET, LIFE LIMITED PARTS FOR ENGINES BUILT TO BS610 INTRCHG WITH P/N 3036290	A B C	1

CONTINUED

- ITEM NOT ILLUSTRATED

EFF MODEL A PT6A-27 B PT6A-28 C PT6A-21	EFF MODEL	EFF MODEL
--	-----------	-----------

72-00-00

Figure 2

Page 12

Aug 27/2004

PRATT & WHITNEY CANADA
ILLUSTRATED PARTS CATALOG
MANUAL PART NO. 3013244

FIG. ITEM	PART NUMBER	AIRLINE PART NUMBER	NOMENCLATURE	EFFECT CODE	UNITS PER ASSY
2			1234567		
- 436A	3036290		.LOG SHEET, LIFE LIMITED PARTS FOR ENGINES BUILT TO BS307, BS321, BS324, BS325, BS330, BS362, BS367, BS374, BS392, BS393, BS410, BS414, BS423, BS954 REPLACED BY PN ST3582-01	A B C	1
- 440	3012389		.BOLT, MACHINE, DRD HEX SEE NOTE 11	A B C	1
- 450	3010566		.WASHER, FLAT SEE NOTE 2	A B C	1
- 460	3011976		.NUT, CASTLE, HEX INTRCHG WITH P/N MS9358-09 SEE NOTE 11	A B C	1
- 460A	MS9358-09		.NUT, CASTLE, HEX SEE NOTE 11	A B C	1
- 470	MS9245-23		.PIN, COTTER SEE NOTE 11	A B C	1
- 480	3013456		.SPACER, SLEEVE SEE NOTE 11	A B C	2
- 490	ST3582-01		.HISTORY RECORD-LIFE LIMITED	A B C	6
			NOTE 1: USED TO SECURE PK257 OR PK1761, NOT REQUIRED WHEN PK1841 IS FITTED		
			NOTE 2: USED TO SECURE PK662, NOT REQUIRED WHEN PK1843 IS FITTED		
			NOTE 3: FITTED TO A LIMITED NUMBER OF ENGINES		
			NOTE 4: FITTED INSTEAD OF PK247 TO ENGINES WITH SPARK IGNITION		
			NOTE 5: FITTED TO PT6A-27 ENGINES WITHOUT PROPELLER REVERSING LINKAGE TO PROTECT THE FUEL CONTROL UNIT SHAFT		
CONTINUED					

- ITEM NOT ILLUSTRATED

EFF MODEL A PT6A-27 B PT6A-28 C PT6A-21	EFF MODEL	EFF MODEL
--	-----------	-----------

72-00-00
Figure 2
Page 13
Aug 27/2004

PRATT & WHITNEY CANADA
ILLUSTRATED PARTS CATALOG
MANUAL PART NO. 3013244

FIG. ITEM	PART NUMBER	AIRLINE PART NUMBER	NOMENCLATURE	EFFECT CODE	UNITS PER ASSY
2			1234567 <u>NOTE 6:</u> USED ON ENGINES NOT FITTED WITH AIR INLET SCREEN P/N 3023695 <u>NOTE 7:</u> FITTED TO PIPER PT6A-28 ENGINES HAVING HOSE P/N 3021653 DELETED <u>NOTE 8:</u> FOR USE WITH FIBERBOARD CONTAINER <u>NOTE 9:</u> WHEN REPLACEMENT SET IS MORE THAN ONE P/N, OLD AND NEW PARTS ARE INTERCHANGEABLE IN COMPLETE SETS ONLY <u>NOTE 10:</u> WILL NOT BE SUPPLIED BY P&WC. CUSTOMERS SHOULD PROVIDE OWN EQUIVALENTS <u>NOTE 11:</u> PARTS REQUIRED FOR DHC-6 SERIES 300 TWIN OTTER PT6A-27 POST-SB1152		

- ITEM NOT ILLUSTRATED

EFF MODEL	EFF MODEL	EFF MODEL

72-00-00
Figure 2
Page 14
Aug 27/2004

Container Assembly, Shipping - Reusable Metal

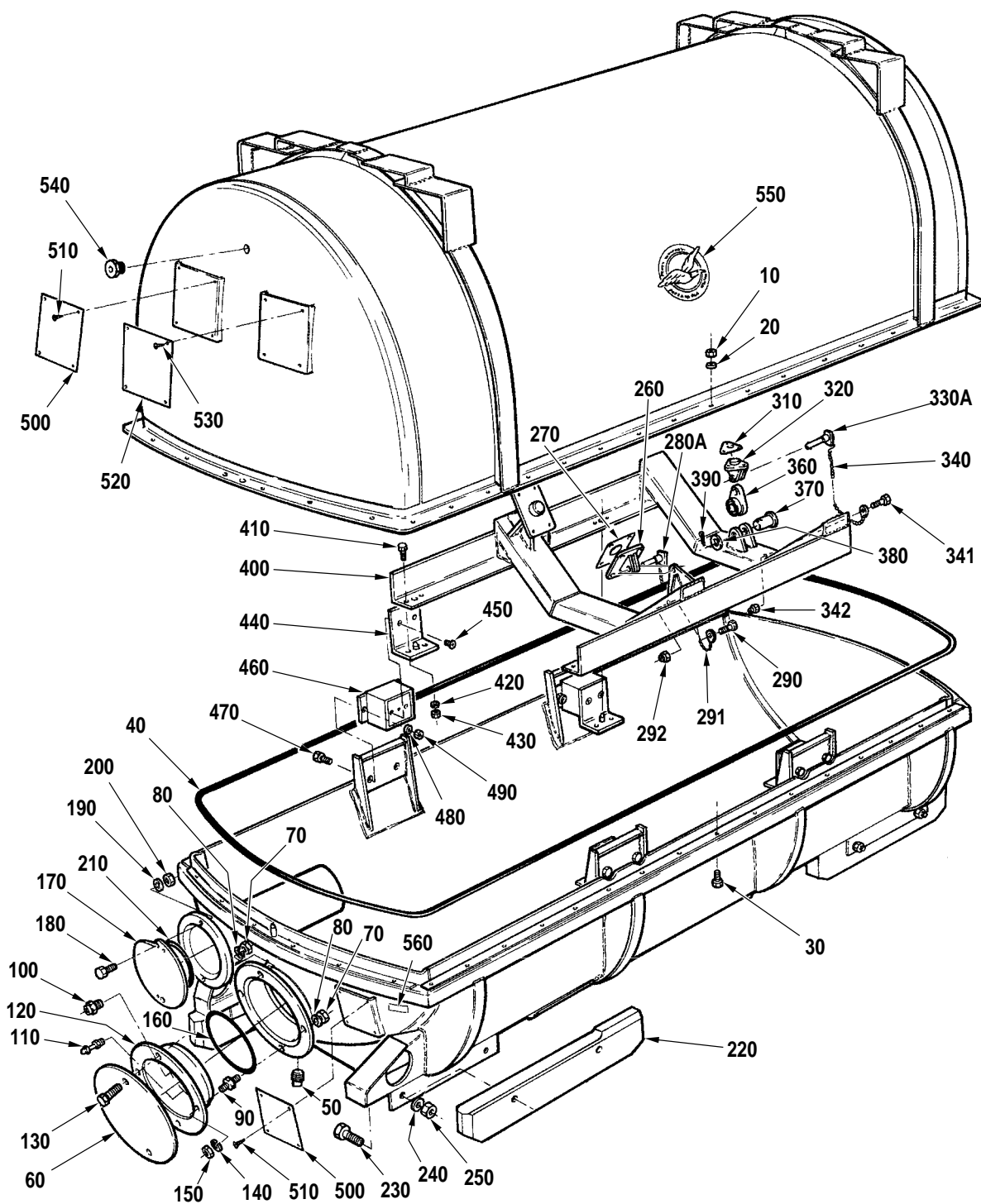
72-00-00

Figure 3

Page 1

Aug 27/2004

PRATT & WHITNEY CANADA
ILLUSTRATED PARTS CATALOG
MANUAL PART NO. 3013244



Container Assembly, Shipping - Reusable Metal
Figure 3

C52017A
72-00-00
Figure 3
Page 2
Aug 27/2004

PRATT & WHITNEY CANADA
ILLUSTRATED PARTS CATALOG
MANUAL PART NO. 3013244

FIG. ITEM	PART NUMBER	AIRLINE PART NUMBER	NOMENCLATURE	EFFECT CODE	UNITS PER ASSY
3			1234567		
- 1	PK329		CONTAINER ASSEMBLY, SHIPPING, REUSABLE METAL FOR ENGINES BUILT TO BS307, BS321, BS324, BS325, BS330, BS362, BS367, BS374, BS392, BS393, BS410, BS414, BS423, BS954 SEE FIG. 2 FOR NHA SEE NOTE 2 PRE-PT6A SPB NO.47 PRE-SB1614 RESTRICTED INTERCHANGEABILITY WITH P/N PK926. REFER TO APPLICABLE SERVICE BULLETIN. TWO-WAY INTRCHG WITH P/N PK3798	A B C	REF
- 1A	PK926		CONTAINER ASSEMBLY, SHIPPING, REUSABLE METAL SEE FIG. 2 FOR NHA SEE NOTE 2 POST-PT6A SPB NO.47 PRE-SB1614 TWO-WAY INTRCHG WITH P/N PK3798	A B C	REF
- 1B	PK3798		CONTAINER ASSEMBLY, SHIPPING, REUSABLE METAL SEE FIG. 2 FOR NHA SEE NOTE 2 POST-SB1614	A B C	REF
10	PK372		.NUT, PLAIN INTRCHG WITH P/N MS51967-9	A B C	36
- 10A	MS51967-9		.NUT, PLAIN	A B C	36
20	PK376		.WASHER, FLAT 0.406 X 0.812 X 0.065 INTRCHG WITH P/N MS27183-14	A B C	36
- 20A	MS27183-14		.WASHER, FLAT 0.406 X 0.812 X 0.065	A B C	36
30	PK365		.BOLT, MACHINE INTRCHG WITH P/N MS90725-62	A B C	36
- 30A	MS90725-62		.SCREW-CAP, HEX 0.375-16 X 1.250	A B C	36

CONTINUED

- ITEM NOT ILLUSTRATED

EFF MODEL A PT6A-27 B PT6A-28 C PT6A-21	EFF MODEL	EFF MODEL
--	-----------	-----------

72-00-00
Figure 3
Page 3
Aug 27/2004

PRATT & WHITNEY CANADA
ILLUSTRATED PARTS CATALOG
MANUAL PART NO. 3013244

FIG. ITEM	PART NUMBER	AIRLINE PART NUMBER	NOMENCLATURE	EFFECT CODE	UNITS PER ASSY
3			1234567		
40	PK341		.PACKING, EXTENDED	A B C	1
50	PK385		.PLUG, PIPE, SQUARE	A B C	1
- 50A	MS20913-6		.PLUG, PIPE, SQUARE	A B C	1
60	PK346		.COVER, SERVICE RECEPTACLE	A B C	1
70	PK372		.NUT, PLAIN INTRCHG WITH P/N MS51967-9	A B C	4
- 70A	MS51967-9		.NUT, PLAIN	A B C	4
80	PK381		.WASHER, LOCK	A B C	4
90	PK348		.STUD, COLLAR, HEX	A B C	2
100	PK334		.VALVE, RELIEF, SERVICE RECEPTACLE	A B C	1
110	PK335		.VALVE, AIR FILL, SERVICE RECEPTACLE	A B C	1
120	PK333		.RECEPTACLE, SERVICE	A B C	1
130	PK367		.BOLT, MACHINE, HEX INTRCHG WITH P/N MS90725-60	A B C	2
- 130A	MS90725-60		.BOLT, MACHINE, HEX	A B C	2
- 135	MS35338-46		.WASHER-LOCK 0.3875 X 0.683 X 0.940 COMPONENT OF P/N PK926 SEE NOTE 2 POST-PT6A SPB NO.47	A B C	2

CONTINUED

- ITEM NOT ILLUSTRATED

EFF MODEL	EFF MODEL	EFF MODEL
A PT6A-27		
B PT6A-28		
C PT6A-21		

72-00-00

Figure 3

Page 4

Aug 27/2004

PRATT & WHITNEY CANADA
ILLUSTRATED PARTS CATALOG
MANUAL PART NO. 3013244

FIG. ITEM	PART NUMBER	AIRLINE PART NUMBER	NOMENCLATURE	EFFECT CODE	UNITS PER ASSY
3			1234567		
140	PK381		.WASHER, LOCK	A B C	2
150	PK372		.NUT, PLAIN INTRCHG WITH P/N MS51967-9	A B C	2
- 150A	MS51967-9		.NUT, PLAIN	A B C	2
160	PK345		.PACKING, PREFORMED	A B C	1
170	PK343		.COVER, RECORD RECEPTACLE	A B C	1
			ATTACHING PARTS		
180	PK366		.BOLT, MACHINE	A B C	2
190	PK377		.WASHER, FLAT INTRCHG WITH P/N MS27183-12	A B C	2
- 190A	MS27183-12		.WASHER, FLAT	A B C	2
200	PK373		.NUT, SELF-LOCKING INTRCHG WITH P/N MS51922-9	A B C	2
- 200A	MS51922-9		.NUT, SELF-LOCKING, HEX	A B C	2
			-----*-----		
210	PK344		.PACKING, PREFORMED	A B C	1
220	PK347		.SKID, SHIPPING CONTAINER COMPONENT OF P/N PK329 SEE NOTE 2 PRE-PT6A SPB NO.47 PRE-SB1614	A B C	4

CONTINUED

- ITEM NOT ILLUSTRATED

EFF MODEL A PT6A-27 B PT6A-28 C PT6A-21	EFF MODEL	EFF MODEL
--	-----------	-----------

72-00-00
Figure 3
Page 5
Aug 27/2004

PRATT & WHITNEY CANADA
ILLUSTRATED PARTS CATALOG
MANUAL PART NO. 3013244

FIG. ITEM	PART NUMBER	AIRLINE PART NUMBER	1234567 NOMENCLATURE	EFFECT CODE	UNITS PER ASSY
3					
- 220A	PK979		.SKID, SHIPPING CONTAINER COMPONENT OF P/N PK926 SEE NOTE 2 POST-PT6A SPB NO.47 PRE-SB1614 NOT INTR WITH P/N PK3799	A B C	4
- 220B	PK3799		.SKID, SHIPPING CONTAINER COMPONENT OF P/N PK3798 SEE NOTE 2 POST-SB1614 ATTACHING PARTS	A B C	4
230	PK368		.BOLT, MACHINE INTRCHG WITH P/N MS90725-117	A B C	8
- 230A	MS90725-117		.SCREW-CAP, HEX 0.500 X 2.500 COMPONENT OF P/N PK329 SEE NOTE 2 PRE-PT6A SPB NO.47 INTRCHG WITH P/N PK1258	A B C	8
- 230B	PK1258		.BOLT-MACHINE, HEX 0.500-13UNC X 9.000 COMPONENT OF P/N PK926 SEE NOTE 2 POST-PT6A SPB NO.47	A B C	8
240	PK382		.WASHER, LOCK INTRCHG WITH P/N MS35338-48	A B C	8
240A	MS35338-48		.WASHER, LOCK 0.516 X 0.873 X 0.125 COMPONENT OF P/N PK326 SEE NOTE 2 PRE-PT6A SPB NO.47	A B C	8
- 240B	MS35338-48		.WASHER-LOCK 0.516 X 0.873 X 0.125 COMPONENT OF P/N PK926 SEE NOTE 2 POST-PT6A SPB NO.47	A B C	16
250	PK375		.NUT, PLAIN INTRCHG WITH P/N MS51967-14	A B C	8
- 250A	MS51967-14		.NUT, PLAIN 0.516 X 0.873 X 0.125 COMPONENT OF P/N PK329 SEE NOTE 2 PRE-PT6A SPB NO.47	A B C	8

CONTINUED

- ITEM NOT ILLUSTRATED

EFF MODEL A PT6A-27 B PT6A-28 C PT6A-21	EFF MODEL	EFF MODEL
--	-----------	-----------

72-00-00
Figure 3
Page 6
Aug 27/2004

PRATT & WHITNEY CANADA
ILLUSTRATED PARTS CATALOG
MANUAL PART NO. 3013244

FIG. ITEM	PART NUMBER	AIRLINE PART NUMBER	1234567 NOMENCLATURE	EFFECT CODE	UNITS PER ASSY
3					
- 250B	MS51967-14		.NUT, PLAIN, HEX 0.516 X 0.873 X 0.125 COMPONENT OF P/N PK926 SEE NOTE 2 POST-PT6A SPB NO.47 -----*-----	A B C	8
260	PK497		.GASKET, SIDE, ENGINE MOUNT PRE-SB1484 PRE-SB1490 TWO-WAY INTRCHG WITH P/N PK2631	A B C	2
- 260A	PK2631		.GASKET, SIDE, ENGINE MOUNT POST-SB1484 POST-SB1490	A B C	2
270	PK487		.BRACKET, ENGINE, SIDE	A B C	2
- 280	AN121817		.PIN, STRAIGHT NONINTR WITH P/N MS17985-C615	A B C	2
280A	MS17985-C615		.PIN, QUICK RELEASE, SELF RETAINING COMPONENT OF P/N PK329 SEE NOTE 2 PRE-PT6A SPB NO.47	A B C	2
- 280B	AN121817		.PIN, STRAIGHT COMPONENT OF P/N PK926 SEE NOTE 2 POST-PT6A SPB NO.47 ATTACHING PARTS	A B C	2
- 285	MS27183-14		.WASHER, FLAT COMPONENT OF P/N PK926 USE WITH P/N AN12187 SEE NOTE 2 POST-PT6A SPB NO.47	A B C	1
- 286	MS24665-285		.WASHER-FLAT 0.406 X 0.812 X 0.065 COMPONENT OF P/N PK926 USE WITH P/N AN12187 SEE NOTE 2 POST-PT6A SPB NO.47 -----*-----	A B C	1
290	MS90725-6		.SCREW-CAP, HEX 0.250-20 X 0.750 COMPONENT OF P/N PK329 SEE NOTE 1 AND 2 PRE-PT6A SPB NO.47	A B C	2

CONTINUED

- ITEM NOT ILLUSTRATED

EFF MODEL A PT6A-27 B PT6A-28 C PT6A-21	EFF MODEL	EFF MODEL
--	-----------	-----------

72-00-00

Figure 3

Page 7

Aug 27/2004

PRATT & WHITNEY CANADA
ILLUSTRATED PARTS CATALOG
MANUAL PART NO. 3013244

FIG. ITEM	PART NUMBER	AIRLINE PART NUMBER	NOMENCLATURE	EFFECT CODE	UNITS PER ASSY
			1234567		
3					
291	PK1672		.CHAIN, SIDE ENGINE MOUNT COMPONENT OF P/N PK329 SEE NOTE 2 PRE-PT6A SPB NO.47	A B C	2
292	MS51922-1		.NUT, SELF-LOCKING 0.250-20 X 0.270 COMPONENT OF P/N PK329 SEE NOTE 2 PRE-PT6A SPB NO.47	A B C	2
- 300	PK379		.PIN, COTTER SEE NOTE 1 PRE-SB1490	A B C	2
310	PK498		.GASKET, REAR, ENGINE MOUNT COMPONENT OF P/N PK329 SEE NOTE 2 PRE-SB1490 PRE-PT6A SPB NO.47 NONINTR WITH P/N PK2630	A B C	1
- 310A	PK2630		.GASKET, REAR, ENGINE MOUNT COMPONENT OF P/N PK926 SEE NOTE 2 POST-SB1490 POST-PT6A SPB NO.47	A B C	1
320	PK488		.BRACKET, ENGINE REAR	A B C	1
			ATTACHING PARTS		
- 330	PK383		.PIN-STRAIGHT, REAR SEE NOTE 1 NONINTR WITH P/N MS17985-C615	A B C	1
330A	MS17985-C615		.PIN-REAR, QUICK RELEASE, SELF RETAINING COMPONENT OF P/N PK329 SEE NOTE 2 PRE-PT6A SPB NO.47	A B C	1
340	PK1672		.CHAIN-ENGINE MOUNT, SHIPPING CONTAINER COMPONENT OF P/N PK329 SEE NOTE 1 AND 2 PRE-PT6A SPB NO.47	A B C	1
341	MS90725-6		.SCREW-CAP, HEX 0.250-20 X 0.750 COMPONENT OF P/N PK329 SEE NOTE 1 AND 2 PRE-PT6A SPB NO.47	A B C	2

CONTINUED

- ITEM NOT ILLUSTRATED

EFF MODEL A PT6A-27 B PT6A-28 C PT6A-21	EFF MODEL	EFF MODEL
--	-----------	-----------

72-00-00
Figure 3
Page 8
Aug 27/2004

PRATT & WHITNEY CANADA
ILLUSTRATED PARTS CATALOG
MANUAL PART NO. 3013244

FIG. ITEM	PART NUMBER	AIRLINE PART NUMBER	NOMENCLATURE	EFFECT CODE	UNITS PER ASSY
3			1234567		
342	MS51922-1		.NUT, SELF-LOCKING	A B C	1
- 350	PK379		.PIN, COTTER SEE NOTE 1	A B C	1
			-----*-----		
360	PK495		.LINK ASSEMBLY, BEARING	A B C	1
			ATTACHING PARTS		
370	PK384		.PIN-STRAIGHT, FLAT HEADED INTRCHG WITH P/N MS20392-9C43	A B C	1
- 370A	MS20392-9C43		.PIN, STRAIGHT, FLAT HEADED	A B C	1
380	PK380		.WASHER, FLAT INTRCHG WITH P/N AN960-1016	A B C	1
- 380A	AN960-1016		.WASHER, FLAT	A B C	1
390	PK644		.PIN, COTTER INTRCHG WITH P/N MS24665-355	A B C	1
- 390A	MS24665-355		.PIN, COTTER	A B C	1
			-----*-----		
400	PK336		.CRADLE, MOUNTING	A B C	1
			ATTACHING PARTS		
410	PK718		.BOLT, MACHINE	A B C	8
420	PK378		.WASHER, FLAT	A B C	8
430	PK374		.NUT, SELF-LOCKING INTRCHG WITH P/N MS21042-5	A B C	8

CONTINUED

- ITEM NOT ILLUSTRATED

EFF MODEL A PT6A-27 B PT6A-28 C PT6A-21	EFF MODEL	EFF MODEL
--	-----------	-----------

72-00-00
Figure 3
Page 9
Aug 27/2004

PRATT & WHITNEY CANADA
ILLUSTRATED PARTS CATALOG
MANUAL PART NO. 3013244

FIG. ITEM	PART NUMBER	AIRLINE PART NUMBER	NOMENCLATURE	EFFECT CODE	UNITS PER ASSY
3			1234567		
- 430A	MS21042-5		.NUT, SELF-LOCKING	A B C	8
			-----*-----		
440	PK749		.BRACKET, MOUNTING	A B C	4
			ATTACHING PARTS		
450	PK371		.SCREW, MACHINE, CSK	A B C	8
			-----*-----		
460	PK338		.MOUNT, SHEAR	A B C	4
			ATTACHING PARTS		
470	PK370		.BOLT, MACHINE INTRCHG WITH P/N MS90726-33	A B C	8
- 470A	MS90726-33		.BOLT, MACHINE, HEX	A B C	8
480	PK378		.WASHER, FLAT	A B C	8
490	PK374		.NUT, SELF-LOCKING INTRCHG WITH P/N MS21042-5	A B C	8
- 490A	MS21042-5		.NUT, SELF-LOCKING	A B C	8
			-----*-----		
500	PK751		.PLATE, IDENTIFICATION	A B C	2
			ATTACHING PARTS		
510	AN535-4-4		.SCREW, DRIVE	A B C	8
			-----*-----		
520	PK748		.PLATE, DATA	A B C	1

CONTINUED

- ITEM NOT ILLUSTRATED

EFF MODEL	EFF MODEL	EFF MODEL
A PT6A-27		
B PT6A-28		
C PT6A-21		

72-00-00

Figure 3

Page 10

Aug 27/2004

PRATT & WHITNEY CANADA
ILLUSTRATED PARTS CATALOG
MANUAL PART NO. 3013244

FIG. ITEM	PART NUMBER	AIRLINE PART NUMBER	NOMENCLATURE	EFFECT CODE	UNITS PER ASSY
3			1234567		
			ATTACHING PARTS		
530	AN535-4-4		.SCREW, DRIVE	A B C	4
			-----*-----		
540	PK342		.INDICATOR, HUMIDITY	A B C	1
550	3008820		.DECAL, COMPANY INSIGNIA INTRCHG WITH P/N 3032923	A B C	2
- 550A	3032923		.DECAL-COMPANY INSIGNIA, ENGINE CONTAINER	A B C	2
- 550B	3032923		.DECAL-COMPANY INSIGNIA, ENGINE CONTAINER	A B C	2
560	MS9244-01		.DECAL, RUBBER ASSEMBLY DATE	A B C	1
- 570	MS20392-5C37		.PIN-STRAIGHT, REAR USED IN LIEU OF P/N PK383 COMPONENT OF P/N PK926 SEE NOTE 2 POST-PT6A SPB NO.47	A B C	1
			ATTACHING PARTS		
- 580	MS27183-14		.WASHER, FLAT 0.406 X 0.812 X 0.065 COMPONENT OF P/N PK926 USE WITH P/N MS20392-5C37 SEE NOTE 2 POST-PT6A SPB NO.47	A B C	2
- 590	MS24665-285		.PIN-COTTER 0.094 X 1.000 COMPONENT OF P/N PK926 USE WITH P/N MS20392-5C37 SEE NOTE 2 POST-PT6A SPB NO.47	A B C	1
			-----*-----		
			NOTE 1: DELETED WHEN P/N'S PK383, PK1672, MS90725-6 AND MS51922-1 ARE FITTED		
CONTINUED					

- ITEM NOT ILLUSTRATED

EFF MODEL A PT6A-27 B PT6A-28 C PT6A-21	EFF MODEL	EFF MODEL
--	-----------	-----------

72-00-00
Figure 3
Page 11
Aug 27/2004

PRATT & WHITNEY CANADA
ILLUSTRATED PARTS CATALOG
MANUAL PART NO. 3013244

FIG. ITEM	PART NUMBER	AIRLINE PART NUMBER	1234567 NOMENCLATURE	EFFECT CODE	UNITS PER ASSY
3			<p align="center"><u>NOTE 2:</u> WHEN REPLACEMENT SET IS MORE THAN ONE P/N, OLD AND NEW PARTS ARE INTERCHANGEABLE IN COMPLETE SETS ONLY</p>		

- ITEM NOT ILLUSTRATED

EFF MODEL	EFF MODEL	EFF MODEL
-----------	-----------	-----------

72-00-00

Figure 3

Page 12

Aug 27/2004

Container Assembly, Shipping, Fiberboard

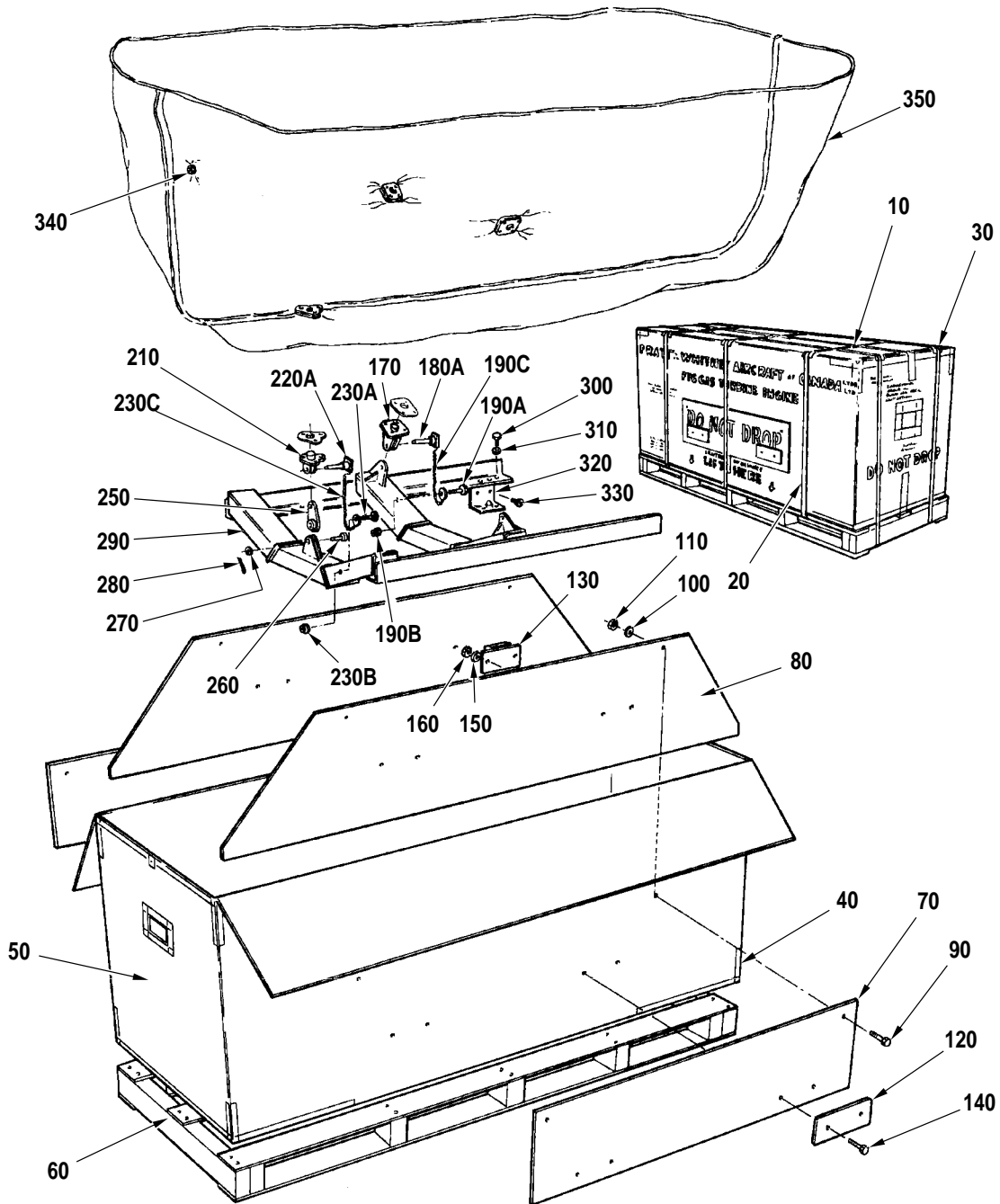
72-00-00

Figure 4

Page 1

Aug 27/2004

PRATT & WHITNEY CANADA
 ILLUSTRATED PARTS CATALOG
 MANUAL PART NO. 3013244



Container Assembly, Shipping, Fiberboard
 Figure 4

C52018
72-00-00
Figure 4
 Page 2
 Aug 27/2004

PRATT & WHITNEY CANADA
ILLUSTRATED PARTS CATALOG
MANUAL PART NO. 3013244

FIG. ITEM	PART NUMBER	AIRLINE PART NUMBER	1234567 NOMENCLATURE	EFFECT CODE	UNITS PER ASSY
4					
- 1	PK562		CONTAINER ASSEMBLY, SHIPPING, FIBERBOARD (ALTERNATE TO P/N PK329) SEE FIG. 2 FOR NHA	A B	REF
	10 PK571		.SEAL, FLAT, STRAPPING SEE NOTE 1	A B	10
	20 PK570		.STRAPPING, FLAT SEE NOTE 1	A B	AR
	30 PK569		.CORNER, METAL, REINFORCING PRE-PT6A SPB NO.15 TWO-WAY INTRCHG WITH P/N PK2785	A	10
- 30A	PK2785		.CORNER, PLASTIC, REINFORCING POST-PT6A SPB NO.15	A B	10
	40 PK388		.TAPE, ADHESIVE, PRESSURE SENSITIVE, FILAMENT REINFORCED SEE NOTE 1	A B	AR
	50 PK563		.BOX, REGULAR, SLOTTED	A B	1
	60 PK675		.PALLET, CONTAINER	A B	1
	70 PK939		.STIFFENER, WOODEN	A B	2
	80 PK938		.STIFFENER, WOODEN	A B	2
			ATTACHING PARTS		
	90 PK573		.BOLT, HEX INTRCHG WITH P/N MS90725-67	A B	4
- 90A	MS90725-67		.BOLT, MACHINE, HEX	A B	4
	100 PK376		.WASHER, FLAT INTRCHG WITH P/N MS27183-14	A B	8
- 100A	MS27183-14		.WASHER, FLAT	A B	8
	110 PK574		.NUT, SELF-LOCKING, HEX INTRCHG WITH P/N MS51922-17	A B	4
- 110A	MS51922-17		.NUT, SELF-LOCKING, HEX	A B	4
			-----*-----		
	120 PK568		.PLATE, REINFORCING	A B	4

CONTINUED

- ITEM NOT ILLUSTRATED

EFF MODEL A PT6A-27 B PT6A-28	EFF MODEL	EFF MODEL
-------------------------------------	-----------	-----------

72-00-00

Figure 4

Page 3

Aug 27/2004

PRATT & WHITNEY CANADA
ILLUSTRATED PARTS CATALOG
MANUAL PART NO. 3013244

FIG. ITEM	PART NUMBER	AIRLINE PART NUMBER	1234567 NOMENCLATURE	EFFECT CODE	UNITS PER ASSY
4					
130	PK338		.MOUNT, SHEAR	A B	4
			ATTACHING PARTS		
140	PK573		.BOLT, HEX INTRCHG WITH P/N MS90725-67	A B	8
- 140A	MS90725-67		.BOLT, MACHINE, HEX	A B	8
150	PK376		.WASHER, FLAT INTRCHG WITH P/N MS27183-14	A B	8
- 150A	MS27183-14		.WASHER, FLAT	A B	8
160	PK574		.NUT, SELF-LOCKING, HEX INTRCHG WITH P/N MS51922-17	A B	8
- 160A	MS51922-17		.NUT, SELF-LOCKING, HEX	A B	8
			-----*-----		
170	PK487		.BRACKET, ENGINE MOUNT, FRONT	A B	2
			ATTACHING PARTS		
- 180	MS20392-5C47		.PIN, STRAIGHT NONINTR WITH P/N MS17985-C615	A B	2
180A	MS17985-C615		.PIN, QUICK RELEASE, SELF RETAINING	A B	2
- 190	PK376		.WASHER, FLAT INTRCHG WITH P/N MS27183-14 SEE NOTE 2	A B	2
190A	MS27183-14		.WASHER, FLAT SEE NOTE 2	A B	2
190B	MS51922-1		.NUT, SELF-LOCKING	A B	2
190C	PK1672		.CHAIN, ENGINE MOUNT, SHIPPING CONTAINER	A B	2
- 200	PK379		.PIN, COTTER SEE NOTE 2	A B	2
			-----*-----		
210	PK488		.BRACKET, ENGINE MOUNT, REAR	A B	1
			ATTACHING PARTS		
- 220	MS20392-5C37		.PIN, STRAIGHT NONINTR WITH P/N MS17985-C615	A B	1

CONTINUED

- ITEM NOT ILLUSTRATED

EFF MODEL A PT6A-27 B PT6A-28	EFF MODEL	EFF MODEL
-------------------------------------	-----------	-----------

72-00-00

Figure 4

Page 4

Aug 27/2004

PRATT & WHITNEY CANADA
ILLUSTRATED PARTS CATALOG
MANUAL PART NO. 3013244

FIG. ITEM	PART NUMBER	AIRLINE PART NUMBER	1234567 NOMENCLATURE	EFFECT CODE	UNITS PER ASSY
4					
220A	MS17985-C615		.PIN, QUICK RELEASE, SELF RETAINING	A B	1
- 230	PK376		.WASHER, FLAT INTRCHG WITH P/N MS27183-14 SEE NOTE 2	A B	1
230A	MS27183-14		.WASHER, FLAT SEE NOTE 2	A B	1
230B	MS51922-1		.NUT, SELF-LOCKING	A B	1
230C	PK1672		.CHAIN, ENGINE MOUNT, SHIPPING CONTAINER	A B	1
- 240	PK379		.PIN, COTTER SEE NOTE 2	A B	1
			-----*-----		
250	PK495		.MOUNT ASSEMBLY, SWIVEL, REAR	A B	1
			ATTACHING PARTS		
260	MS20392-9C43		.PIN, STRAIGHT	A B	1
270	PK380		.WASHER, FLAT INTRCHG WITH P/N AN960-1016	A B	1
- 270A	AN960-1016		.WASHER, FLAT	A B	1
280	PK644		.PIN, COTTER INTRCHG WITH P/N MS24665-355	A B	1
- 280A	MS24665-355		.PIN, COTTER	A B	1
			-----*-----		
290	PK336		.CRADLE, MOUNTING	A B	1
			ATTACHING PARTS		
300	PK572		.BOLT, MACHINE, HEX INTRCHG WITH P/N MS90725-32	A B	8
- 300A	MS90725-32		.BOLT, MACHINE, HEX	A B	8
310	PK575		.WASHER, SHAKE PROOF	A B	8
			-----*-----		
320	PK567		.BRACKET, MOUNTING	A B	4

CONTINUED

- ITEM NOT ILLUSTRATED

EFF MODEL A PT6A-27 B PT6A-28	EFF MODEL	EFF MODEL
-------------------------------------	-----------	-----------

72-00-00

Figure 4

Page 5

Aug 27/2004

PRATT & WHITNEY CANADA
ILLUSTRATED PARTS CATALOG
MANUAL PART NO. 3013244

FIG. ITEM	PART NUMBER	AIRLINE PART NUMBER	1234567 NOMENCLATURE	EFFECT CODE	UNITS PER ASSY
4			ATTACHING PARTS		
330	PK371		.SCREW, MACHINE, HEX	A B	8
			-----*-----		
340	PK576		.INDICATOR, HUMIDITY	A B	1
350	PK721		.ENVELOPE, ENGINE PROTECTIVE PRE-PT6A SPB NO.18	A B	1
- 350A	PK2634		TWO-WAY INTRCHG WITH P/N PK2634 .ENVELOPE, ENGINE PROTECTIVE POST-PT6A SPB NO.18	A B C	1
- 360	PK498		..GASKET, REAR MOUNT PRE-SB1490	A B	REF
			TWO-WAY INTRCHG WITH P/N PK2630		
- 360A	PK2630		..GASKET, REAR MOUNT POST-SB1490	A B C	REF
- 370	PK497		..GASKET, SIDE MOUNT PRE-SB1490	A B	REF
			TWO-WAY INTRCHG WITH P/N PK2631		
- 370A	PK2631		..GASKET, SIDE MOUNT POST-SB1490	A B C	REF
			NOTE 1: WILL NOT BE SUPPLIED BY P&WC CUSTOMERS SHOULD PROVIDE THEIR OWN EQUIVALENTS		
			NOTE 2: DELETED WHEN ITEMS 180A, 190A, 190B & 190C ARE FITTED		

- ITEM NOT ILLUSTRATED

EFF MODEL	EFF MODEL	EFF MODEL
A PT6A-27		
B PT6A-28		
C PT6A-21		

72-00-00
Figure 4
Page 6
Aug 27/2004

Container Assembly, Engine Shipping

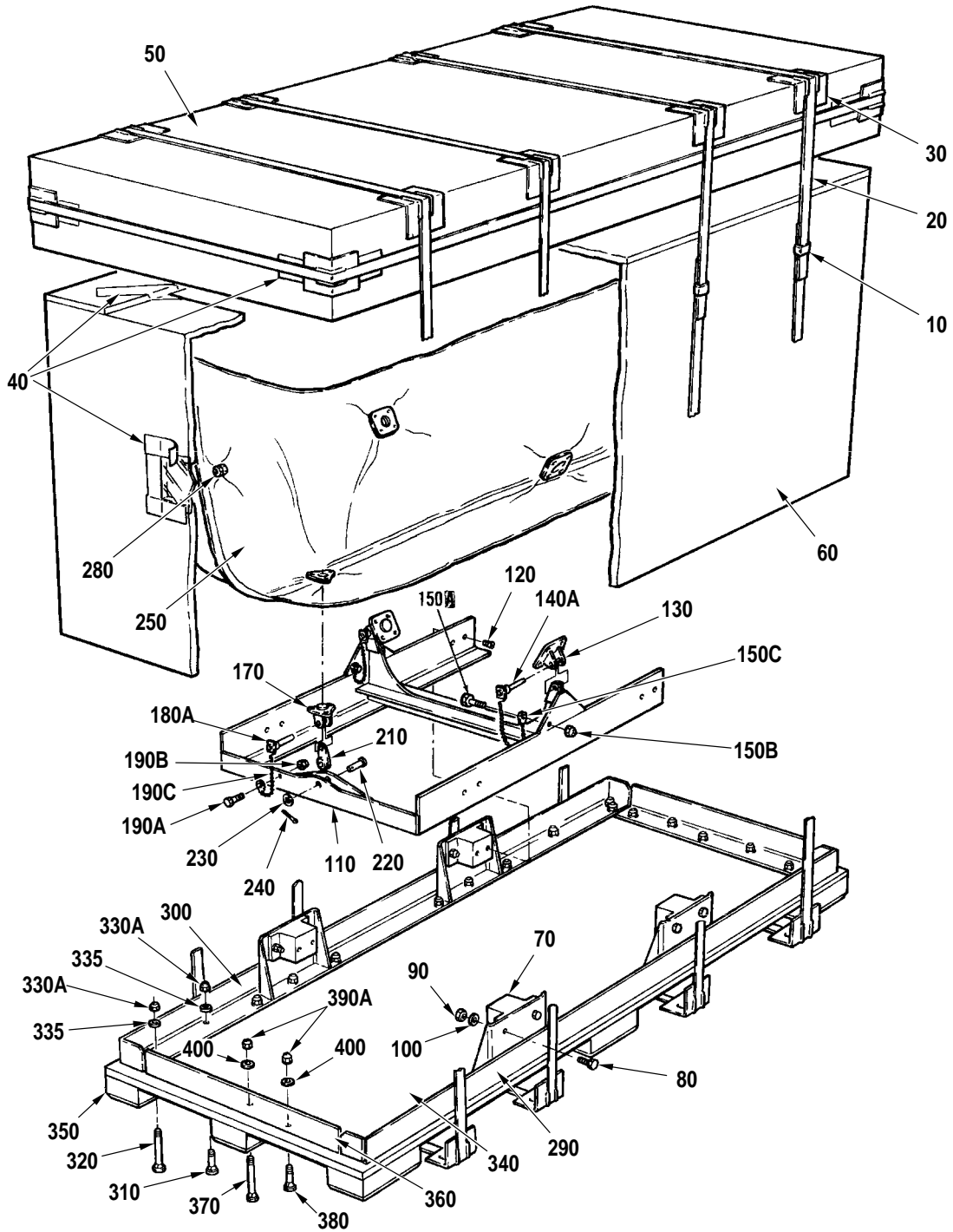
72-00-00

Figure 5

Page 1

Aug 27/2004

PRATT & WHITNEY CANADA
ILLUSTRATED PARTS CATALOG
MANUAL PART NO. 3013244



C52019

Container Assembly, Engine Shipping
Figure 5

72-00-00

Figure 5

Page 2

Aug 27/2004

PRATT & WHITNEY CANADA
ILLUSTRATED PARTS CATALOG
MANUAL PART NO. 3013244

FIG. ITEM	PART NUMBER	AIRLINE PART NUMBER	NOMENCLATURE	EFFECT CODE	UNITS PER ASSY
5			1234567		
- 1	PK1325		CONTAINER ASSEMBLY, SHIPPING, FIBERBOARD FOR ENGINES BUILT TO BS307, BS321, BS324, BS325, BS330, BS362, BS367, BS374, BS392, BS393, BS410, BS414, BS423, BS954 (ALTERNATE TO P/N PK329) SEE FIG. 2 FOR NHA PRE-PT6A SPB NO.18 TWO-WAY INTRCHG WITH P/N PK2743	A B C	REF
- 1A	PK2743		CONTAINER ASSEMBLY, ENGINE SHIPPING SEE FIG. 2 FOR NHA POST-PT6A SPB NO.18 PRE-SB1614 TWO-WAY INTRCHG WITH P/N PK3809	A B C	REF
- 1B	PK3809		CONTAINER ASSEMBLY ENGINE SHIPPING SEE FIG. 2 FOR NHA MAY BE OBTAINED BY REWORK OF P/N PK2743 POST-SB1614	A B C	REF
10	PK571		.SEAL, FLAT, STRAPPING SEE NOTE 1	A B C	5
20	PK570		.STRAPPING, STEEL SEE NOTE 1	A B C	AR
30	PK569		.CORNER, METAL REINFORCING PRE-PT6A SPB NO.15 PRE-SB1614 TWO-WAY INTRCHG WITH P/N PK2785	A B C	20
- 30A	PK2785		.CORNER, PLASTIC, REINFORCING POST-PT6A SPB NO.15 POST-SB1614	A B C	20
40	PK388		.TAPE, PRESSURE SENSITIVE ADHESIVE, FILAMENT REINFORCED SEE NOTE 1	A B C	AR
50	PK1320		.COVER, CONTAINER, SHIPPING, TWCF	A B C	1
60	PK1321		.SLEEVE, CONTAINER SHIPPING, TWCF	A B C	1

CONTINUED

- ITEM NOT ILLUSTRATED

EFF MODEL A PT6A-27 B PT6A-28 C PT6A-21	EFF MODEL	EFF MODEL
--	-----------	-----------

72-00-00
Figure 5
Page 3
Aug 27/2004

PRATT & WHITNEY CANADA
ILLUSTRATED PARTS CATALOG
MANUAL PART NO. 3013244

FIG. ITEM	PART NUMBER	AIRLINE PART NUMBER	NOMENCLATURE	EFFECT CODE	UNITS PER ASSY
5			1234567		
70	PK338		.MOUNT, SHEAR	A B C	4
			ATTACHING PARTS		
80	PK367		.BOLT, HEX	A B C	8
90	PK574		.NUT, SELF-LOCKING, HEX INTRCHG WITH P/N MS51922-17	A B C	8
- 90A	MS51922-17		.NUT, SELF-LOCKING, HEX	A B C	8
100	PK376		.WASHER, FLAT INTRCHG WITH P/N MS27183-14	A B C	8
- 100A	MS27183-14		.WASHER, FLAT	A B C	8
			-----*-----		
110	PK1322		.CRADLE, MOUNTING, SHIPPING CONTAINER	A B C	1
			ATTACHING PARTS		
120	PK371		.SCREW, MACHINE, CSK	A B C	8
			-----*-----		
130	PK487		.BRACKET, ENGINE MOUNT, FRONT	A B C	2
			ATTACHING PARTS		
- 140	MS20392-5C47		.PIN, STRAIGHT NONINTR WITH P/N MS17985-C615	A B C	2
140A	MS17985-C615		.PIN, QUICK RELEASE, SELF RETAINING	A B C	2
- 150	PK376		.WASHER, FLAT (DELETED WHEN ITEMS 140A, 150A, 150B & 150C FITTED)	A B C	2
150A	MS90725-6		.BOLT, HEX HEAD	A B C	2

CONTINUED

- ITEM NOT ILLUSTRATED

EFF MODEL A PT6A-27 B PT6A-28 C PT6A-21	EFF MODEL	EFF MODEL
--	-----------	-----------

72-00-00
Figure 5
Page 4
Aug 27/2004

PRATT & WHITNEY CANADA
ILLUSTRATED PARTS CATALOG
MANUAL PART NO. 3013244

FIG. ITEM	PART NUMBER	AIRLINE PART NUMBER	1234567 NOMENCLATURE	EFFECT CODE	UNITS PER ASSY
5					
150B	MS51922-1		.NUT, SELF-LOCKING	A B C	2
150C	PK1672		.CHAIN, ENGINE MOUNT	A B C	2
- 160	PK379		.PIN, COTTER (DELETED WHEN ITEMS 140A, 150A, 150B & 150C FITTED) -----*-----	A B C	2
170	PK488		.BRACKET, ENGINE MOUNT, REAR	A B C	1
			ATTACHING PARTS		
- 180	MS20392-5C37		.PIN, STRAIGHT NONINTR WITH P/N MS17985-C615	A B C	1
180A	MS17985-C615		.PIN, QUICK RELEASE, SELF RETAINING	A B C	1
- 190	PK376		.WASHER, FLAT (DELETED WHEN ITEMS 180A, 190A, 190B & 190C FITTED)	A B C	1
190A	MS90725-6		.BOLT, HEX HEAD	A B C	1
190B	MS51922-1		.NUT, SELF-LOCKING	A B C	1
190C	PK1672		.CHAIN, ENGINE MOUNT	A B C	1
- 200	PK379		.PIN, COTTER (DELETED WHEN ITEMS 180A, 190A, 190B & 190C FITTED) -----*-----	A B C	1
210	PK495		.MOUNT ASSEMBLY, SWIVEL, REAR	A B C	1
			ATTACHING PARTS		
220	MS20392-9C43		.PIN, STRAIGHT	A B C	1

CONTINUED

- ITEM NOT ILLUSTRATED

EFF MODEL A PT6A-27 B PT6A-28 C PT6A-21	EFF MODEL	EFF MODEL
--	-----------	-----------

72-00-00
Figure 5
Page 5
Aug 27/2004

PRATT & WHITNEY CANADA
ILLUSTRATED PARTS CATALOG
MANUAL PART NO. 3013244

FIG. ITEM	PART NUMBER	AIRLINE PART NUMBER	NOMENCLATURE	EFFECT CODE	UNITS PER ASSY
5			1234567		
230	PK380		.WASHER, FLAT INTRCHG WITH P/N AN960-1016	A B C	1
- 230A	AN960-1016		.WASHER, FLAT	A B C	1
240	PK644		.PIN, COTTER INTRCHG WITH P/N MS24665-355	A B C	1
- 240A	MS24665-355		.PIN, COTTER	A B C	1
			-----*-----		
250	PK721		.ENVELOPE, ENGINE PROTECTIVE PRE-PT6A SPB NO.18 TWO-WAY INTRCHG WITH P/N PK2634	A B C	1
- 250A	PK2634		.ENVELOPE, ENGINE PROTECTIVE POST-PT6A SPB NO.18	A B C	1
- 260	PK498		..GASKET, REAR MOUNT PRE-SB1490 TWO-WAY INTRCHG WITH P/N PK2630	A B C	REF
- 260A	PK2630		..GASKET, REAR MOUNT POST-SB1490	A B C	REF
- 270	PK497		..GASKET, SIDE MOUNT PRE-SB1490 TWO-WAY INTRCHG WITH P/N PK2631	A B C	REF
- 270A	PK2631		..GASKET, SIDE MOUNT POST-SB1490	A B C	REF
280	PK576		.INDICATOR, HUMIDITY	A B C	1
290	PK1323		.BRACKET, SHEAR MOUNT SUPPORT, RH	A B C	1
300	PK1388		.BRACKET, SHEAR MOUNT SUPPORT, LH	A B C	1

CONTINUED

- ITEM NOT ILLUSTRATED

EFF MODEL	EFF MODEL	EFF MODEL
A PT6A-27		
B PT6A-28		
C PT6A-21		

72-00-00
Figure 5
Page 6
Aug 27/2004

PRATT & WHITNEY CANADA
ILLUSTRATED PARTS CATALOG
MANUAL PART NO. 3013244

FIG. ITEM	PART NUMBER	AIRLINE PART NUMBER	NOMENCLATURE	EFFECT CODE	UNITS PER ASSY
5			1234567		
			ATTACHING PARTS		
	310 MS35751-43		.BOLT, CARRIAGE	A B C	16
	- 310A COMMERCIALY AVAILABLE		.BOLT, CARRIAGE, ZINC PLATED 0.3125-18 UNC-2A X 1.500 IN. LG. SEE NOTE 2	A B C	16
	320 MS35751-53		.BOLT, CARRIAGE	A B C	8
	- 320A COMMERCIALY AVAILABLE		.BOLT, CARRIAGE, ZINC PLATED 0.3125-18 UNC-2A X 4.500 IN. LG. SEE NOTE 2	A B C	8
	- 330 PK373		.NUT SELF-LOCKING NONINTR WITH P/N MS51967-5	A B C	24
	330A MS51967-5		.NUT, PLAIN, HEX	A B C	24
	- 330B COMMERCIALY AVAILABLE		.NUT, HEX, ZINC PLATED 0.3125-18 UNC-2B SEE NOTE 3	A B C	24
	335 MS35338-45		.WASHER, LOCK	A B C	24
	- 335A COMMERCIALY AVAILABLE		.LOCKWASHER, ZINC PLATED 0.3125 IN.	A B C	24
			-----*-----		
	340 PK1739		.SKID BASE ASSEMBLY, CONTAINER SHIPPING PRE-SB1614 NOT INTR WITH P/N PK1739	A B C	1
	- 340A PK1801		.SKID BASE ASSEMBLY, CONTAINER SHIPPING POST-SB1614	A B C	1
	350 PK1324		..SKID BASE, CONTAINER SHIPPING PRE-SB1614 NOT INTR WITH P/N PK3800	A B C	1
	- 350A PK3800		..SKID BASE, CONTAINER SHIPPING MAY BE OBTAINED BY REWORK OF P/N PK1324 POST-SB1614	A B C	1

CONTINUED

- ITEM NOT ILLUSTRATED

EFF MODEL A PT6A-27 B PT6A-28 C PT6A-21	EFF MODEL	EFF MODEL
--	-----------	-----------

72-00-00
Figure 5
Page 7
Aug 27/2004

PRATT & WHITNEY CANADA
ILLUSTRATED PARTS CATALOG
MANUAL PART NO. 3013244

FIG. ITEM	PART NUMBER	AIRLINE PART NUMBER	NOMENCLATURE	EFFECT CODE	UNITS PER ASSY
5			1234567		
360	PK1671		..BRACKET, REINFORCING SKID PLATFORM	A B C	2
			ATTACHING PARTS		
370	MS35751-53		..BOLT, CARRIAGE	A B C	2
- 370A	COMMERCIALY AVAILABLE		..BOLT, CARRIAGE, ZINC PLATED 0.3125-18 UNC-2A X 4.500 IN. LG. SEE NOTE 2	A B C	2
380	MS35751-43		..BOLT, CARRIAGE	A B C	8
- 380A	COMMERCIALY AVAILABLE		..BOLT, CARRIAGE, ZINC PLATED 0.3125-18 UNC-2A X 4.500 IN. LG. SEE NOTE 2	A B C	8
- 390	PK373		..NUT, SELF-LOCKING NONINTR WITH P/N MS51967-5	A B C	10
390A	MS51967-5		..NUT, PLAIN, HEX	A B C	10
- 390B	COMMERCIALY AVAILABLE		..NUT, HEX, ZINC PLATED 0.3125-18 UNC-2B SEE NOTE 3	A B C	10
400	MS35338-45		..WASHER, LOCK	A B C	10
- 400A	COMMERCIALY AVAILABLE		..LOCKWASHER, ZINC PLATED 0.3125 IN.	A B C	10
			-----*-----		
			<u>NOTE 1:</u> WILL NOT BE SUPPLIED BY P&WC CUSTOMERS SHOULD PROVIDE OWN EQUIVALENT		
			<u>NOTE 2:</u> THE MECHANICAL PROPERTIES MUST MEET OR EXCEED SAE SPECIFICATION J429 GRADE 2		
			<u>NOTE 3:</u> THE MECHANICAL PROPERTIES MUST MEET OR EXCEED SAE SPECIFICATION J995 GRADE 2		

- ITEM NOT ILLUSTRATED

EFF MODEL	EFF MODEL	EFF MODEL
A PT6A-27		
B PT6A-28		
C PT6A-21		

72-00-00
Figure 5
Page 8
Aug 27/2004

Container Assembly, Engine Shipping, Reinforced

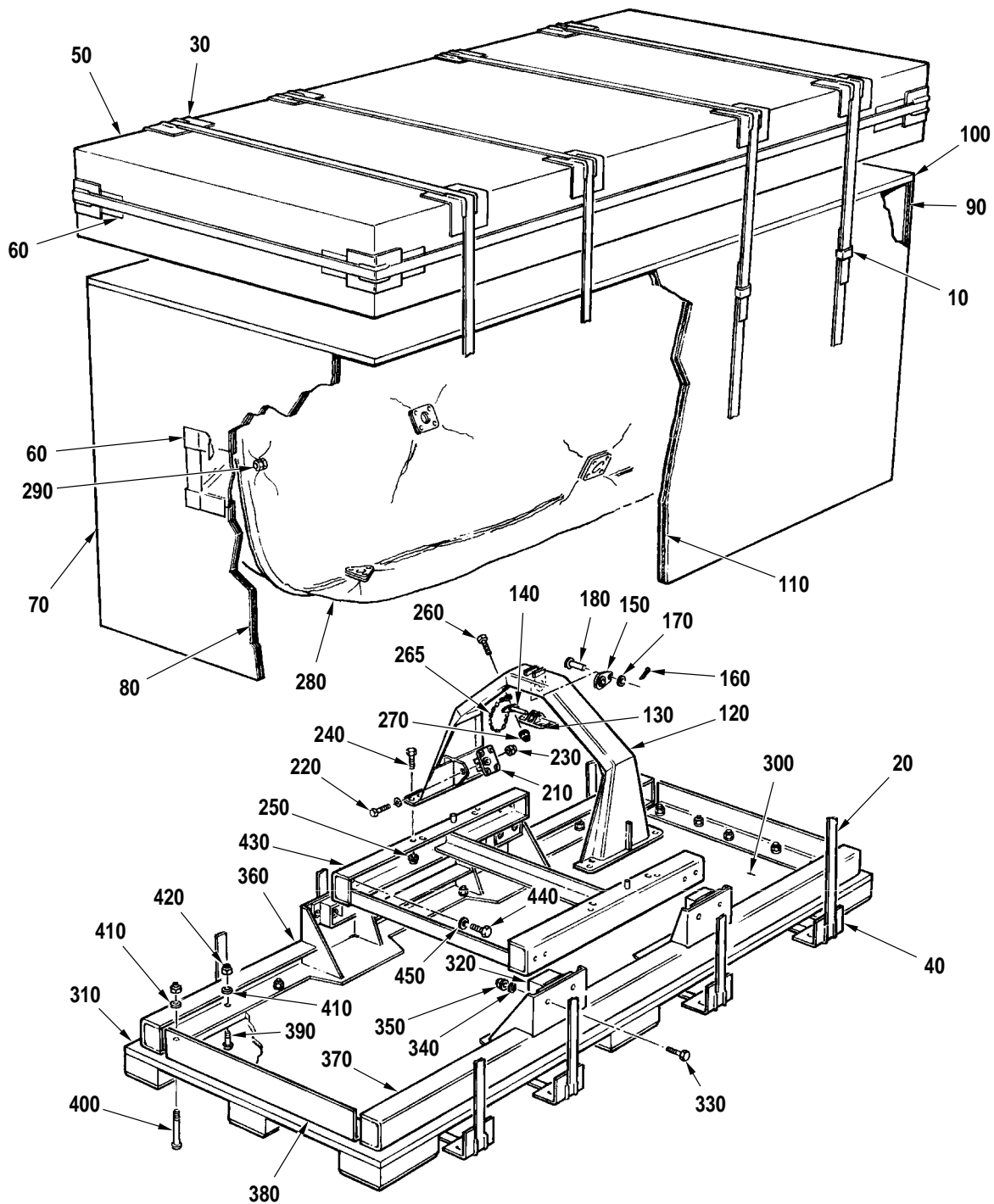
72-00-00

Figure 6

Page 1

Aug 27/2004

PRATT & WHITNEY CANADA
ILLUSTRATED PARTS CATALOG
MANUAL PART NO. 3013244



Container Assembly, Engine Shipping, Reinforced
Figure 6

72-00-00

Figure 6

Page 2

Aug 27/2004

C52099

PRATT & WHITNEY CANADA
ILLUSTRATED PARTS CATALOG
MANUAL PART NO. 3013244

FIG. ITEM	PART NUMBER	AIRLINE PART NUMBER	NOMENCLATURE	EFFECT CODE	UNITS PER ASSY
6			1234567		
- 1	PK2122		CONTAINER ASSEMBLY, ENGINE SHIPPING (REINFORCED) SEE FIG. 2 FOR NHA PRE-PT6A SPB NO.18 TWO-WAY INTRCHG WITH P/N PK2729	B	REF
- 1A	PK2729		CONTAINER ASSEMBLY, ENGINE SHIPPING SEE FIG. 2 FOR NHA POST-PT6A SPB NO.18 PRE-SB1614 TWO-WAY INTRCHG WITH P/N PK3807	A B C	REF
- 1B	PK3807		CONTAINER ASSEMBLY, ENGINE SHIPPING, REINFORCED SEE FIG. 2 FOR NHA MAY BE OBTAINED BY REWORK OF P/N PK2729 POST-SB1614	B	REF
10	PK571		.SEAL, FLAT, STRAPPING SEE NOTE 1	B	10
20	PK570		.STRAPPING, STEEL SEE NOTE 1	B	AR
30	PK1865		.CORNER, CARDBOARD, REINFORCING PRE-PT6A SPB NO.15 TWO-WAY INTRCHG WITH P/N PK2785	B	12
- 30A	PK2785		.CORNER, PLASTIC, REINFORCING POST-PT6A SPB NO.15	B	12
40	PK569		.CORNER, METAL, REINFORCING PRE-PT6A SPB NO.15 TWO-WAY INTRCHG WITH P/N PK2785	B	8
- 40A	PK2785		.CORNER, PLASTIC, REINFORCING POST-PT6A SPB NO.15	A B C	8
50	PK2124		.COVER, SHIPPING, TWCF	B	1
60	PK388		.TAPE, PRESSURE SENSITIVE, ADHESIVE, FILAMENT REINFORCED SEE NOTE 1	B	AR
70	PK2123		.SLEEVE, SHIPPING CONTAINER	B	1
80	PK2125		.PLYWOOD PRE-SB1614	B	1
- 80A	DELETED				
90	PK2126		POST-SB1614 .PLYWOOD PRE-SB1614	B	1

CONTINUED

- ITEM NOT ILLUSTRATED

EFF MODEL A PT6A-27 B PT6A-28 C PT6A-21	EFF MODEL	EFF MODEL
--	-----------	-----------

72-00-00
Figure 6
Page 3
Aug 27/2004

PRATT & WHITNEY CANADA
ILLUSTRATED PARTS CATALOG
MANUAL PART NO. 3013244

FIG. ITEM	PART NUMBER	AIRLINE PART NUMBER	1234567 NOMENCLATURE	EFFECT CODE	UNITS PER ASSY
6					
- 90A	DELETED				
100	PK2127		POST-SB1614 .PLYWOOD	B	1
110	PK2128		.PLYWOOD PRE-SB1614	B	1
- 110A	DELETED				
120	PK1792		POST-SB1614 .SUPPORT, ENGINE, SHIPPING CONTAINER	B	1
130	PK1793		.BRACKET, ENGINE MOUNT	B	1
140	MS17985-C615		.PIN, QUICK RELEASE	B	1
150	PK1794		.MOUNT ASSEMBLY, SWIVEL ATTACHING PARTS	B	1
160	MS9245-44		.PIN, COTTER	B	1
170	MS27183-14		.WASHER, FLAT	B	1
180	AN121811		.PIN, STRAIGHT HD -----*-----	B	1
- 190	PK1795		..MOUNT, SWIVEL	B	1
- 200	PK1072		..BEARING, SELF ALIGN	B	1
210	PK1796		.BRACKET, ENGINE MOUNT ATTACHING PARTS	B	2
220	MS9523-13		.BOLT, MACHINE, HEX	B	2
230	MS21045-C8		.NUT, SELF-LOCKING, HEX -----*-----	B	2
240	MS90726-58		.SCREW, CAP, HEX	B	8
250	MS21042-6		.NUT, SELF-LOCKING, HEX	B	8
260	MS90725-15		.SCREW, CAP, HEX	B	1
265	PK1672		.CHAIN, ENGINE MOUNT	B	1
270	MS51922-1		.NUT, SELF-LOCKING, HEX	B	1
280	PK1797		.ENVELOPE, PROTECTIVE, ENGINE PRE-PT6A SPB NO.18 TWO-WAY INTRCHG WITH P/N PK2641	B	1
- 280A	PK2641		.ENVELOPE, ENGINE PROTECTIVE POST-PT6A SPB NO.18	A B C	1
290	PK576		.INDICATOR, HUMIDITY	B	1

CONTINUED

- ITEM NOT ILLUSTRATED

EFF MODEL	EFF MODEL	EFF MODEL
A PT6A-27		
B PT6A-28		
C PT6A-21		

72-00-00

Figure 6

Page 4

Aug 27/2004

PRATT & WHITNEY CANADA
ILLUSTRATED PARTS CATALOG
MANUAL PART NO. 3013244

FIG. ITEM	PART NUMBER	AIRLINE PART NUMBER	NOMENCLATURE	EFFECT CODE	UNITS PER ASSY
6			1234567		
300	PK2130		.SKID BASE ASSEMBLY, SHIPPING CONTAINER PRE-SB1614 NOT INTR WITH P/N PK3806	B	1
- 300A	PK3806		.SKID BASE ASSEMBLY, SHIPPING CONTAINER MAY BE OBTAINED BY REWORK OF P/N PK2130 POST-SB1614	B	1
310	PK2129		..SKID BASE, SHIPPING CONTAINER PRE-SB1614 NOT INTR WITH P/N PK3805	B	1
- 310A	PK3805		..SKID BASE, SHIPPING CONTAINER POST-SB1614	B	1
320	PK338		..MOUNT, SHEAR, SHIPPING CONTAINER ATTACHING PARTS	B	4
330	MS90725-60		..SCREW, CAP, HEX	B	8
340	MS27183-14		..WASHER, FLAT	B	8
350	MS51922-17		..NUT, SELF-LOCKING, HEX -----*-----	B	8
360	PK1790		..BRACKET, SHEAR MOUNT, RH	B	1
370	PK1789		..BRACKET, SHEAR MOUNT, LH	B	1
380	PK1801		..BRACKET, REINFORCING ATTACHING PARTS	B	2
390	MS35751-43		..BOLT, SQUARE NECK	B	40
- 390A	COMMERCIALY AVAILABLE		..NUT, HEX, ZINC PLATED 0.3125-18 UNC-2B SEE NOTE 3	B	28
400	MS35751-53		..BOLT, SQUARE NECK	B	10
- 400A	COMMERCIALY AVAILABLE		..BOLT, CARRIAGE, ZINC PLATED 0.3125-18 UNC-2A X 4.500 IN. LG. SEE NOTE 2	B	22
410	MS35338-45		..WASHER, LOCK	B	50
- 410A	COMMERCIALY AVAILABLE		..LOCKWASHER, ZINC PLATED 0.3125 IN.	B	50
420	MS51967-5		..NUT, PLAIN, HEX	B	50
- 420A	COMMERCIALY AVAILABLE		..NUT, HEX, ZINC PLATED 0.3125-18 UNC-2B SEE NOTE 3 -----*-----	A B C	50

CONTINUED

- ITEM NOT ILLUSTRATED

EFF MODEL A PT6A-27 B PT6A-28 C PT6A-21	EFF MODEL	EFF MODEL
--	-----------	-----------

72-00-00

Figure 6

Page 5

Aug 27/2004

PRATT & WHITNEY CANADA
ILLUSTRATED PARTS CATALOG
MANUAL PART NO. 3013244

FIG. ITEM	PART NUMBER	AIRLINE PART NUMBER	NOMENCLATURE	EFFECT CODE	UNITS PER ASSY
6			1234567		
430	PK1791		..CRADLE, MOUNTING, SHIPPING CONTAINER	B	1
			ATTACHING PARTS		
440	MS9531-08		..BOLT, MACHINE, HEX, DR	B	8
450	MS27183-12		..WASHER, FLAT	B	8
			-----*		
			<u>NOTE</u> 1: WILL NOT BE SUPPLIED BY P&WC; CUSTOMERS SHOULD PROVIDE OWN EQUIVALENT		
			<u>NOTE</u> 2: THE MECHANICAL PROPERTIES MUST MEET OR EXCEED SAE SPECIFICATION J429 GRADE 2		
			<u>NOTE</u> 3: THE MECHANICAL PROPERTIES MUST MEET OR EXCEED SAE SPECIFICATION J995 GRADE 2		

- ITEM NOT ILLUSTRATED

EFF MODEL B PT6A-28	EFF MODEL	EFF MODEL
------------------------	-----------	-----------

72-00-00
Figure 6
Page 6
Aug 27/2004